

Second Class Postage  
Paid at Wayne, Nebraska

# THE WAYNE HERALD

WAYNE, NEBRASKA 68707, THURSDAY, NOVEMBER 13, 1980  
ONE-HUNDRED FIFTH YEAR NUMBER NINETEEN

Published Every Monday  
and Thursday at  
114 Main, Wayne,  
Nebraska 68707

## Council Holds on Economic District

The City Council held probably its shortest regular meeting for a long time Tuesday night at the City Hall, adjourning in less than 30 minutes.

The Council took care of six warrants involving three projects currently underway in Wayne, approving bills totaling \$37,698.03.

**A WARRANT** from engineering firm Bruce Gilmore & Associates for services involving design of Hillside Drive and Thorman Street in the amount of \$836.26 was approved. \$20,959.44 was approved for Concrete Specialty, Inc. for construction of Hillside and Thorman. \$121.89 was approved to Gilmore & Associates for design on the extension of Sixth Street behind El Toro. \$7,108.10 to Concrete Specialty for construction of Sixth Street. \$168.57 to Gilmore for design of a water extension district for Hillside Drive, and \$8,503.77 to Swinney Trenching Service for construction of the water main.

The Council tabled action on joining the Northeast Nebraska Economic Development District (NENEDD). At the final regular meeting in October, representatives of the Nebraska Department of Economic Development proposed that Wayne join the development district for this area.

**BECAUSE ALL** three Northeast Nebraska Councils on Government (COGS) currently are without staff and are sup-

ported by only staff personnel in Norfolk, the governing board of the NENEDD may be reorganized, according to a state spokesman.

The idea of the Economic Development Districts — when formed about two years ago — was to help communities finance industrial development. Through federal grants secured with the assistance of the EDD, utilities would be expanded into industrial areas.

Each county in the district would be represented by one elected official appointed by the county's board of commissioners. While Wayne County would be represented by one elected and one appointed representative, the city of Wayne would be asked to pay the per capita fee.

**THE COUNTY**, which selects the representatives, would have the option of providing the per capita fee. However, the county commissioners, at their Nov. 4 board meeting, decided not to join the economic district.

The board cited similarities between the proposed economic district and the former COGS which the county also had declined to join.

The commissioners also felt the new economic group would not provide any help to rural counties such as Wayne. The county can join at any time and left that option open.

**IN ORDER TO** carry out an active economic development program, a small staff would be employed, the state official said. Each district member government would be asked to pay 5 cents per capita to support district activities. This would be supplemented by state and federal funds and would enable the district to hire a director and secretary.

Currently, 14 counties in Northeast Nebraska have either been designated or are considering designation as a member of the EDD. Councilman Larry Johnson voted against delaying any Council action.

In other action, the Council held some discussion on appointing a committee to interview a city administrator to replace former administrator Darrell Brewington.

**THE CITY** is taking applications now and has received several to date. It was informally agreed that each Council member would have a part in reviewing the applications and a committee would be formed later.

A public hearing on special assessments in Marywood Subdivision has been rescheduled for Nov. 25. It had been set for Tuesday night, but potential problems with publication dates and notification of property owners forced the delay.

The Council adopted an ordinance involving portions of the city which are in the flood plain. The new regulation creates the flood-

way and its districts and sets forth rules of governance.

**CITY CLERK** Norm Melton notified the Council that Nebraska Public Power District is considering an increase of from 12 to 15 percent in its rates. A meeting will be held at 9:30 a.m. Nov. 18 in Norfolk for city officials wanting more information on the proposed increase.

Gary Van Meter, in his last official duty as Chamber of Commerce manager, presented Mayor Wayne Marsh and the city of Wayne with a bronze plaque proclaiming Wayne as an All-American city. For more information, see picture elsewhere in this issue.

Wayne was one of 23 communities across the state so designated at ceremonies in Lincoln Friday night.

The plaque will be displayed at each of the Wayne banks over the next couple of weeks and then will be displayed permanently at the Council Chambers.

**THE COUNCIL** also will have Police Chief Vern Fairchild review the removal of stop signs at Sherman and Faircross, 12th and Sherman Streets and Second and Sherman Streets.

In other action, the Council approved the appointment of Ken Slutz to the board of appeals.

All Council members except Darrell Fuelberth were present and all actions were unanimous unless noted otherwise.

## Grand Give-A-Way Seeking A Winner

We're looking for another Grand Give A Way winner Thursday (today), so area shoppers are urged to be inside one of the 53 participating stores at 8 p.m.

**THE WINNING** name will be announced at that time. Anyone who receives The Wayne Herald or The Marketer or who has signed-up is eligible to win the \$1,000 in script money. The person whose name is drawn or their spouse must be in one of the stores when the name is announced.

There is no purchase necessary to win. The most recent winner was Don Koenig of Wayne. He was at Sherry Bros. when his name was drawn Oct. 16.

Participating stores are as follows:

**BURGER BARN**, El Toro, Chrysler Center, Wayne Shoe Co., Grless Rexall, Fredrickson Oil Co., Arnie's Ford-Mercury, Black Knight, Vets Club, Carhart Lumber Co., Eldon's Standard,

Triangle Finance, Peoples Natural Gas Co., Karel's, The 4th Jug, Northeast Nebraska Insurance Agency, Jack Tomrdie Kuhn's Carpet and Draperies, Surbers, Jeff's Cafe, Rich's Super Foods, Sav-Mor Drug, Sherry Bros., State National Bank, The Wayne Herald, Wellman's IGA, Rusty Nail, T & C Electronics, Wayne Book Store, Western Auto, Swan's Ladies' Apparel, Discount Furniture, Diamond Center, Midwest Federal Savings & Loan Association, Mike Perry Chevy-Olds, Coryell Derby.

**BEN FRANKLIN**, The Cupboard Inc., Bill's GW, Coast to Coast, KTCH, Charlie's Refrigeration, Ellingson Motor Co., The First National Bank, Kaup's TV, Kuhn's Morning Shopper, McDonald's, Merchant Oil, Pamida.

Wayne Grain and Feed, Doescher Appliance, Associated Insurance, TP Lounge, Thies-Brudigan, King's Carpets, Melodee Lanes and Logan Valley Impl.

## School Insurance Moving Upward

In a meeting lasting but an hour, the Wayne-Carroll School District board of education moved through a variety of routine items including review of parent-teacher conferences, insulation for the middle and elementary schools and insurance costs.

**THE BOARD** heard a report from Supt. Francis Haun regarding the continuing increase in insurance rates on school buildings.

The insurable cash value of the middle school this year is \$1,277,000. Last year it was about \$990,000. The high school's insurable value for the coming year is \$2,108,000 compared to \$1,980,000 last year.

The elementary school is valued at \$810,000 this year and \$641,000 last year, while the Carroll elementary is valued for insurance purposes at \$280,000 compared to \$224,000 last year.

**SUPERINTENDENT** Haun reported that the buildings are insured for 90 percent of

their value. This does not include contents of the building.

The board also authorized Superintendent Haun to advertise for bids on insulating two of the district's buildings — the middle and elementary schools.

Sealed proposals for installing insulation will be received until 8 p.m. Monday, Dec. 8, at the high school. Materials at the middle school must insure an R value of 38, while at the elementary school there must be an R value of 22.

**BECAUSE THERE** is less room for insulation in the roof at the elementary, the R value will be less than at the middle school, it was explained.

Work at the middle school will be done during school, while work at the elementary school will be done over Christmas vacation between Dec. 19 and Jan. 2.

Cost of the work will be borne by the school's sinking fund.

Parent teacher conferences were considered a success again this year, particularly on the elementary level.

**REPORTS ISSUED** by principals at each of the three school buildings indicated that the high school grades had the poorest parental attendance while the elementary had the best.

There was 100 percent attendance at the Carroll elementary and a 97.8 percent attendance at the Wayne elementary. There was an 81 percent attendance rate at the middle school and 58.9 percent at the high school level.

Kindergarten and first grade at Wayne and the entire Carroll elementary (37 students) had the best attendance with 100 percent each. Second grade at Wayne had 97.7 percent attendance, third grade had 93.8 percent, fourth grade had 97.2 percent.

**AT THE MIDDLE** school, fifth grade had an 88 percent attendance rate, sixth grade an 86 percent attendance and seventh and eighth grades a 69 percent attendance rate.

At the high school, ninth grade had a 67 percent attendance rate, 10th grade a 60 percent attendance rate, 11th grade a 59.2 percent attendance rate and 12th grade a 50.5 percent attendance rate.

Some comments at the middle school on conferences this year included the following:

Parents of sixth grade students mentioned that their children like their science work and similar group activities. Parents also were pleased with the individual help that each child gets in the language arts program.

**IN THE SEVENTH** and eighth grades, several parents said they moved to Wayne because of the school system. Others said they were glad their children were in the learning disabilities program and had seen improvement.

Richard Metteer, middle school principal, said, "Overall, I believe the conferences were a great success and the school administration and teachers received many compliments. I personally heard no criticism of the school system."

In other action, the board adopted an equal opportunity employer policy to bring



DENNIS OTTE, one of several veterans to participate in the Veterans Day parade and ceremonies here Tuesday.

## Living, Dead Veterans Paid Tribute Tuesday

A cold, blustery wind escorted the annual Veterans Day parade down Main Street Tuesday morning as a sparse crowd watched on.

**LED BY THE** traditional color guard consisting of veterans of various conflicts, the parade also included auxiliary members of the local Veterans of Foreign War, American Legion and Disabled American Veterans.

The Wayne-Carroll School District Marching Blue Devils provided three numbers prior to a brief talk by veteran Gerald Conway of Wayne. Clete Sharer, himself a veteran, provided the welcome and other amenities.

CONWAY, assistant professor of business at Wayne State College, told the shivering crowd that on Veterans Day there is a "responsibility to those who have come before us so we may be free."

He said that "we are here today to pay tribute to the 30 million living veterans and the 14 million deceased veterans who have given so much so we can live in freedom."

A grateful nation remembers those who have served their country and their ideals, he said in urging everyone to visit an ill or disabled veteran.

"I INTEND to serve my country and will continue to support its ideals," he offered.



## Local Men Injured Sunday

**ONE MAN REMAINS** hospitalized in Sioux City and another was hospitalized here after a car-truck accident about 11:50 a.m. Sunday east of Wayne on U.S. 35 near the entrance to the Municipal Airport. Arnie Reeg, 61, Wayne, remains in fair condition at St. Luke's Hospital in Sioux City, with ankle and rib injuries and assorted bruises, cuts and abrasions. Stan Baier, 41, Wayne, a passenger in the car driven by Reeg, was treated for cuts and bruises at Providence Medical Center and was held for observation. He has been

released. The driver of the semi-truck cab, Douglas Hervey, 22, West Linn, Ore., was treated at PMC and released. All three were transported by PMC Rescue Unit. According to law enforcement reports, the truck and car were eastbound on U.S. 35 when the truck struck the rear of the Reeg vehicle, owned by Baier, as it was attempting a left turn into the airport. The car was nearly totaled and the truck severely damaged. Investigation continues.

## Test Scores Show Students Do Well

If recent achievement test scores are any indication, students in Wayne's school system appear to be surviving a nationwide downturn in test results.

**THE WAYNE-CARROLL** School District's board of education received the good word at its regular Monday meeting when Supt. Francis Haun provided results of Science Research Associates achievement tests.

Grades four through eight were tested, and the results indicate the fifth graders had the highest test results of any of the local grades tested.

According to the tests, Wayne students scored higher than the national average in every category. The tests were given in reading, mathematics, language arts,

reference materials, social studies and science.

**THE TESTS** were broken down into reading vocabulary and comprehension, math concepts, computation and problem solving, language arts, mechanics, usage and spelling and reference.

The fifth grade scored highest with a composite score of 83. The fourth grade had a composite of 76, the seventh grade 75, the ninth grade a 70, the sixth grade 68 and the eighth grade 64.

The composite scores mean that of every 100 students taking the test, 83 in the fifth grade scored higher than the national norm, 76 in the fourth grade scored higher than the national norm, etc., etc. The national norm is considered 60.

SCHOOL INSURANCE  
Continued on page 2

# Record

## News Briefs

### Chamber Coffee at Goblirsch's

This week's Chamber of Commerce coffee will be held from 10 to 11 a.m. Friday at the office of Dr. George Goblirsch.

The office was recently remodeled and a Progress Award will be presented.

All Chamber members are urged to attend.

### Diabetic Unit to Meet

The Northeast Nebraska Diabetic Unit will hold its Nov. 17 meeting at 7:30 p.m. at Northeast Technical Community College in Norfolk.

Guest speaker for the evening will be Irene Bach from Randolph. She will speak on meal planning during illness.

### Neihardt Museum Hours Change

Winter visitation hours will begin Monday at the John G. Neihardt Center, a branch museum of the Nebraska State Historical Society.

The museum will be open Monday through Friday from 9 a.m. to 5 p.m. It will be closed on weekends, but tours may be arranged by contacting curator John Lindahl at the center at 648-3388.

The center will return to regular visitation hours on April 1. Admission is free.

### WSC Grad to High Post

A graduate of Wayne State College has been appointed director of government liaison for the American National Standards Institute in Washington, D.C.

A 1935 graduate of WSC, J. Phillip Carlson is a lawyer with considerable experience with the federal government.

Since 1956, he has been minority counsel to the House Committee on Government Operations. He has a law degree from Georgetown University.

### Travel Study Program Filling

Wayne State College 1981 Travel/Study program to Scandinavia/Russia is filling up fast.

Interested persons should apply now to insure acceptance in the program because the number of participants is limited to 25.

The trip is June 11-24 and will include visits to Copenhagen, Stockholm, Helsinki and Leningrad.

Call Chuck Kay at 375-2200 extension 255 for more information.

### Allen Students to Clinic

Several area students will attend the Nebraska Music Educators' annual in-service convention clinic in Grand Island Nov. 20-22.

Kevin Anderson, Collette Kraemer and Desiree Williams of Allen will attend; and Steve Morse and Becky Westerhaus of Winside will attend.

Guest conductors will include Dr. Tom Lee, director of bands, University of Texas; Dr. Glenn Block, director of orchestra and opera, University of Missouri at Kansas City; and Dr. Karle Erickson, associate professor of music, Gustavus Adolphus College in Minnesota.

### Missing Minister Has Local Ties

The Lincoln minister who has been missing since early Friday in the area of Wymore has local friends and relatives.

Mark Chaplin, 25, associate minister of Lincoln's Capitol City Christian Church, is the son-in-law of Bricie Nicholson of rural Wakefield. His wife's grandparents are the Walter Pearsons of Wayne.

Chaplin has been missing since he left his home about 5 a.m. Friday to go hunting. His car was found Friday night parked on a road four miles north of Barneson in an area known as the Old Sand Cut School site.

Three carloads of friends and relatives from Wayne helped search Southeast Nebraska Sunday.



In 1882 the game of croquet was so popular in the U.S. that a National Croquet Association was formed!

## THE WAYNE HERALD

Serving Northeast Nebraska's Great Farming Area



No. 19  
Thursday,  
Nov. 13,  
1980

114 Main Street Wayne, Nebraska 68787 Phone 375-2400

Established in 1875, a newspaper published semi-weekly (Monday and Thursday (except holidays), by Wayne Herald Publishing Company, Inc., J. Alan Cramer, President; entered in the post office at Wayne, Nebraska 68787. 2nd class postage paid at Wayne, Nebraska 68787.



Dan Field  
Editor

Jim Marsh  
Business Manager

Official Newspaper of the City of Wayne, the County of Wayne and the State of Nebraska

PUBLICATION NUMBER — USPS 470-540

### SUBSCRIPTION RATES

In Wayne, Pierce, Cedar, Dixon, Thurston, Cuming, Stanton and Madison Counties: \$10.79 per year, \$1.00 for six months, \$6.16 for three months. Outside counties mentioned: \$12.00 per year, \$10.00 for six months, \$6.50 for three months. Single copies 20 cents.

## Dixon County Court News

### COURT FINES

Constance K. Bon Berger, Sargent, \$30, speeding; Dean E. Fuchser, Emerson, \$33, speeding and no operator's license; Robe S. Ford, Laurel, \$27, speeding; Mike Kirby, Silver Creek, \$58; hunting waterfowl with shotgun capable of holding more than 3 shells; Douglas D. Osbahr, Allen, \$300, 90 day jail sentence and 1 year probation, and \$384.10 restitution, theft of movable property (more than \$100 and less than \$300), criminal trespass, criminal mischief.

### MOTOR VEHICLE

1981 — Vern M. Hubbard, Allen, Ford.

1980 — Randall H. Batley, Newcastle, Buick; Jeffrey F. Creamer, Concord, Pontiac; LeRoy L. Lunz, Wakefield, Ford pickup; Carroll Van Valin, Wakefield, Oldsmobile; Dale Pearson, Wakefield, Dodge.

1979 — Marisa Temple d/b/a K-9 Klipper, Ponca, Chevrolet van; Larry H. Lanser, Allen, Dodge; Julie A. Richards, Ponca, Honda.

1977 — Dennis L. Meyer, Wakefield, Chevrolet.

1976 — Steve L. Lunz, Allen, Ford pickup; Donald F. Paulsen, Wakefield, Chevrolet pickup; Nancy Mackling, Emerson, Ford.

1975 — Tim Beacom, Waterbury, Plymouth.

1974 — Bob J. Kneiff, Ponca, Dodge; Gary D. Salmon, Wakefield, Oldsmobile.

1973 — Cheryl Gotch, Allen, Chevrolet; Cecil Rhodes, Emerson, Coachman travel trailer; Francis P. Davey, Ponca, Ford; Michael L. Starzl, Emerson, Harley Davidson.

1972 — Melvin Wiese, Wakefield, Pontiac; Timothy S. Beacom, Waterbury, Homemade mobile home.

1971 — Dave Backman, Waterbury, Chevrolet.

1970 — Marland Schroeder, Wakefield, Pontiac; Bill J.

Gotch, Allen, Chevrolet; Mark Brewer, Ponca, Dodge; David Carr, Emerson, Oldsmobile; Dick Harrison, Ponca, Oldsmobile.

1967 — John Hendersson, Wakefield, Ford.

### REAL ESTATE

Grace Bourns to Paul Bourns, N 1/2 SE 1/4 of 30-30N-6, and SE 1/4 NE 1/4 of 30-30-6, DS exempt.

Paul Bourns to Grace Bourns, NW 1/4 SW 1/4 of 29-30N-6 and N 90 feet of Lot 4 and E 20 feet of N 90 feet of Lot 5, Blk. 101, original town of Ponca, DS exempt.

Craig C. and Kim M. Blohm to Larry D. and Tina Lee Wilsch, Lot 14, Blk. 2, village of Martinsburg, DS \$1.10.

Faith Lutheran Church Inc. to Zion Cemetery Association, parcel of land beginning at NE corner of SW 1/4 SW 1/4 of 5-31-4, containing 1 acre of land, more or less, a parcel of land of the SE 1/4 NE 1/4 of 18-31-4 containing 1 and 9/16 acres and a parcel commencing at the NW corner of SE 1/4 SE 1/4 of 18-31-4, DS exempt.

Francis David and Patricia A. Hough to Virginia A. Surber, Lot 19 and S 25 feet of Lot 20, Blk. 3, original plat of the village of Waterbury, DS \$5 cents.

Ted G. and Helen Fuoss to Elaine M. and William J. Leuders, a part of the SW 1/4 of 7-27N-4, DS \$2.20.

Samuel and Karen Knepper to James B. and Colleen Decker, part of Lot 14 and part of W 1/2 SW 1/4 of 10-28N-5, DS \$24.75.

John and Ruth H. Gotch to Orville A. and Ruth E. Nobbe, that part of NE 1/4 SW 1/4 of 15-29N-5 and all that part of the SE 1/4 NW 1/4 and NE 1/4 SW 1/4 of 15-29N-5 that lies west of the centerline of South Creek, DS exempt.

Cora Miller, a single person to Duane Grunke, SE 1/4 of 7-27N-4, DS \$74.80.

Orville A. and Ruth E. Nobbe to John Gotch, a tract of land situated in Section 15 and lying E of a line commencing at NW corner of 15-29N-5, DS exempt.



## County Court

### FINES

Mary Nusrafflah, Lincoln, speeding, \$19; Debra Tompson, Laurel, speeding, \$10; Curtis D. Waterbury, Neligh, speeding, \$25; A. Daniel Brown, Battle Creek, speeding, \$22; Roger A. Helkes, Hartington, speeding, \$22; David B. Fox, Coleridge, speeding, \$22; Roma Goebbert, Wayne, speeding, \$32; Tim Sehl, parking ticket violation, \$5; Richard Olson, Wakefield, parking ticket violation, \$5; Lawrence G. Bradshaw, North Sioux City, speeding, \$16; Keith D. Buschkamp, Crofton, speeding, \$16.

### CRIMINAL

The following criminal dispositions were completed recently in County Court:

James Sanders, Laurel, consuming alcoholic beverage on public way, \$10.

Mary Bower, Wayne, failure to remove snow, \$5.

## Property Transfers

Nov. 7 — Ethel T. Woodruff to Robert G. and Marsha A. Foote, E 100 feet of Lots 13, 14, 15 and 16, Blk. 8, College Hill Addition to Wayne, DS \$28.05.

Nov. 10 — Joseph C. and Connie J. White to Alfred C. and Ruth V. Carstens, Lot 6 and E 1/2 of Lot 5, Weible's Second Addition to Winside, DS \$30.25.

"The best part of the potato is underground."

English Proverb

## All-Nebraska Status for Wayne

THE CITY OF WAYNE was recognized Friday evening as one of 23 communities designated an All-Nebraska community this year. Wayne was one of six to be named for the first time, although the community entered the event in 1978 and 1979 as well. The honor was bestowed upon the city at the Nebraska Community Improvement Program by Gov. Charles Thone (left). Receiving the honor on behalf of Wayne were Mayor Wayne Marsh and Verne Ellingson, chairman of the local betterment committee. From left are Governor Thone, Mayor Marsh, Mrs. Ellingson and Mrs. Thone. The All-Nebraska status was achieved for providing a high level of municipal services to the citizens of Wayne. Criteria upon which the honor was based include health services, water, roads, recreation, government, industry, economic development and electrical systems, etc.

## School Insurance Increases

The school district into compliance with state and federal regulations.

The Nebraska Department of Education recently completed computations for the Wayne Carroll School District.

Hunter's Knoll, being developed north of Mike Perry Chevrolet, another the Papenburg Subdivision one mile east of the drive in theater, and the other Banister Subdivision just north of the drive in across the county road.

According to their figures, the cost per lunch to the district for 1979-80 was \$1.0428. The state average cost was \$1.0429.

In other items, the board reviewed preliminary plans for three subdivisions. One involved

ALL MEMBERS were present except Dorothy Ley and Wilbur Giese and all actions were unanimous.

## The Weather

Date	Hi	Lo	Prec.
Oct 29	44	19	
Oct 30	58	29	
Oct 31	62	31	
Nov 1	NA	28	
Nov 2	72	30	
Nov 3	60	37	
Nov 4	60	34	
Nov 5	43	30	
Nov 6	73	41	
Nov 7	67	42	
Nov 8	68	41	
Nov 9	65	31	
Nov 10	44	25	
Nov 11	45	38	
Nov 12		37	

## Hospital News

### WAYNE

ADMISSIONS: Helen Ellis, Wayne; Jane Rasmussen, Wayne; Bruce Eddie, Carroll; Earl Mattes, Allen; Dorothy Hubbard, Wayne; Arnie Reeg, Wayne; Gladys Valh, Wayne; Christine Cook, Carroll; Clara Nelson, Laurel; Glenn Wiseman, Wayne.

DISMISSALS: Juan Avitan, Laurel; Daryl Hubbard, Wayne; Carol Niemann and baby Wayne, Bob Bergt; Wayne Lucille Thompson, Laurel; Bruce Eddie, Carroll; Fred Winther Pflger.

### WAKEFIELD

ADMISSIONS: Frieda Wichman, Wakefield; Mildred Lundahl, Wakefield; Leslie Bebee, Wakefield; Nellie Neill, Emerson.

DISMISSALS: Lonnie Wardip, South Sioux City; Jack Park, Wakefield; Leslie Bebee, Wakefield; Emma Lund, Ponca; Fred Koster, Emerson.

## Marriage Licenses

Raymond Duane Jensen, 23, Wakefield, and Theresa Jean Heithold, 25, Wakefield.

Donald Dale Hoffgrewe, 26, Norfolk, and Sandra Ann Ekberg, 25, Norfolk.

Kevin Vincent Dorcey, 28, Wayne, and Sandra Jean Kirsch, 24, Wayne.



## OBITUARIES

### Charlotte Dillion

Word was received here of the death of Charlotte Dillion of Fort Meyers, Fla., on Friday, Nov. 7.

Mrs. Dillion was a former pastor at Dixon, Winside, Wisner and Ponca. Funeral services were scheduled to be held Wednesday, Nov. 12, at the United Methodist Church in Wisner, with burial in Wisner.

### Mabel Sophia Sandahl

Services for Mabel Sophia Sandahl, 87, were held Saturday, Nov. 6, from Salem Lutheran Church, the Rev. Robert V. Johnson officiating. Burial was in Wakefield Cemetery.

Mrs. Sandahl was born Sept. 20, 1893, in Wakefield to Frank and Louise Anderson Nelson, and died Thursday, Nov. 6, at the Wakefield Health Care Center.

She married Ernest Sandahl Oct. 11, 1922, in Wakefield and was a member of Salem Lutheran Church.

Pallbearers were Conroy Munson, Maurice Swenson, Carroll Munson, LeRoy Roberts, Kenneth Swanson and Vandell Rain.

Survivors include her husband, Ernest of Wakefield; three sons, Neil and Wayne of Wakefield, and Dean of Lincoln.

# Discount Furniture's Value Packed Specials

<p>Reg. 939.00 <b>6 Pc. GARRISON DINING ROOM SET</b> China, Oval Table and 4 Chairs Only <b>599<sup>95</sup></b> 6 pcs.</p>	<p>Reg. 1,489.00 <b>GARRISON DINING ROOM SET</b> 48 China, Oval Table w/ Extra Leaf, 4 Slot Back Chairs See This For Only <b>989<sup>95</sup></b> 6 pcs.</p>	<p>Reg. 719.95 <b>5 Pc. CHROMCRAFT DINETTE SET</b> Oval Table w/Extra Leaf &amp; 4 Swivel Caster Chairs Only <b>589<sup>95</sup></b> 5 pcs.</p>
<p>Reg. 669.95 <b>3 Pc. ALL WOOD BEDROOM SUITE</b> Triple Dresser w/ Hutch Mirror, 5 Drawer Chest, Headboard Only <b>519<sup>95</sup></b> 3 pcs.</p>	<p>Reg. 589.95 <b>3 Pc. BEDROOM SUITE</b> Large Triple Dresser w/Mirror, Door Chest, Headboard Yours For Only <b>399<sup>95</sup></b> 3 pcs.</p>	<p>Reg. 1,195.95 <b>3 Pc. BEDROOM SUITE</b> Triple Dresser w/ Mirror, 5 Drawer Chest, Headboard Pillowwood Only <b>799<sup>95</sup></b> 3 pcs.</p>
<p>Reg. 545.00 <b>COMPLETE FLOTATION SLEEP</b> Includes Mattress, Foundation, Heater, Bladder, Fill and Drain Kit, Thermostat, Heavy Duty frame — Queen Size Introductory Special Only <b>449<sup>00</sup></b></p>	<p>QUEEN SIZE Smooth 95% Mattress and Box Spring 2 Sets Only <b>99<sup>95</sup></b></p>	<p>Reg. 659.95 <b>SOFA-SLEEPER</b> Nylon Quilted Cover Only <b>499<sup>95</sup></b></p>
<p>Reg. 399.95 <b>SOFA SLEEPER</b> Choice of Colors Only <b>299<sup>95</sup></b></p>	<p>Reg. 669.95 <b>SOFA</b> Pillow Arm Quilted Velvet Cover Only <b>399<sup>95</sup></b></p>	<p>RECLINERS By Lazy Boy, Knudsen, Cappucci Only <b>169<sup>95</sup></b> A up</p>
<p>SOFA'S Group I Values to 429.95 Only <b>299<sup>95</sup></b></p>	<p>SOFA'S Group II Values to 529.95 Only <b>399<sup>95</sup></b></p>	<p>SOFA'S Group III Values to 876.00 Only <b>439<sup>95</sup></b></p>
<p>ROCKERS Values to 189.95 Your Choice of Colors Only <b>139<sup>95</sup></b></p>	<p>END TABLES COCKTAIL TABLES Discontinued Styles Some Damaged Your Choice <b>1/2 Price</b></p>	<p>Reg. 219.95 OCCASIONAL CHAIRS Only <b>149<sup>95</sup></b></p>

# DISCOUNT FURNITURE

FREE DELIVERY  
Phone 375-1285

# Speaking of People

## Wayne State Jazz Ensemble Presenting 'From Rag to Rock'

Music "From Rag to Rock" will fill the air in the Wayne State College Ramsey Theatre at 8 p.m. on Tuesday, Nov. 18, when the Wayne State Jazz Ensemble, under the direction of Dr. Ray Kelson, presents its annual fall concert.

At the title suggests, the program will include a variety of 20th Century pop music styles ranging from Scott Joplin's rag "The Entertainer," through Dixieland, be-bop, swing, and ending with Tone Kwas' rock chart "The Spider."

One section of the concert will be a "Salute to the Big Band Era" of the 30's and 40's, including arrangements used by Duke Ellington ("Take the A

Train"), Les Brown ("Bizat Has His Day"), Spike Jones ("Cocktails for Two") and others.

A special feature will be a radio adaptation (complete with sound effects) of Edgar Allan Poe's murder story, "The Cask of Amontillado," presented by Iota Beta Sigma, WSC honorary broadcast fraternity.

The cast includes Tom Teeters as Montessor, Lynn Trevett as Fortunata, and Chris Hennig and Theresa Wolf as announcers. Sandy Larson is student director and Sheila Phipps is assistant director, with sound effects handled by Bart Reed, Theresa Wolf, Jackie Osten, Tom Becker

and Don Green.

The story has been adapted for radio by Samuel Good, Roz Davis and Sue Behrendt.

Students to be featured as soloists with the Jazz Ensemble include Connie Linder, alto and soprano sax; Lisa Bertsch, alto sax; Chris Crogrove, tenor sax and tenor sax; Kathy Olmes, piccolo; Randy Jary, trumpet and flugelhorn; Joe Dolsak, Mike Peters and Russell Johnson, trombones; Ray Worden and Jeff Graen, drums; Ron Smith, vibes; Judy Kucera and Karla Millander, piano; and Doyle Anderson and Scott Irick, vocals.

The program is open to the public free of charge.

## Financial Aids Meeting For Students, Parents

Students and their parents will be able to receive information concerning application for financial aid for continuing education on Thursday, Nov. 20, at 8 p.m. in the Wisner-Pilger Junior Senior High School.

Counselor Daryle Urwiler will present a program of information on how to apply for financial aid to help pay the cost of further education.

Urwiler said everyone is welcome at the meeting, however upperclassmen and their parents are especially encouraged to attend as there are numerous opportunities for financial assistance if the proper application

method are followed and deadlines met.

Urwiler urges juniors and their parents to attend so they can get necessary information early and then build on this knowledge the following year.

He also invites parents who now have students in post-secondary schools, reminding them that the financial aid process must be followed each year and there are always changes in the programs or application procedures.

Urwiler emphasized that persons need not reside in the Wisner-Pilger district to attend the informative meeting.

# Come to Church

**CHRISTIAN LIFE ASSEMBLY**  
(A. R. Weiss, pastor)  
Sunday: Sunday school, 9:45 a.m.; worship, 10:45; evening worship, 7:30 p.m.  
Wednesday: Evening worship, 7:30 p.m.

**EVANGELICAL FREE CHURCH**  
1 mile East of Country Club (Larry Ostercamp, pastor)  
Sunday: Sunday school, 10 a.m.; worship, 11; evening service, 7 p.m.  
Wednesday: Bible study, 8 p.m.

**FAITH EVANGELICAL LUTHERAN CHURCH**  
Wisconsin Synod (Wesley Bruss, pastor)  
Sunday: Worship, 8:30 a.m.; Sunday school, 9:30.  
Wednesday: Confirmation class, 3:30 p.m.

son banquet, 8 p.m.  
Wednesday: Men's prayer breakfast, 6:30 a.m.; Morning Glories Interest Group, 9:30; Charity Interest Group, 1:30 p.m.; Naomi Interest Group, 2; junior and youth choir rehearsal, 4; ball choir rehearsal, 7; Trustees meeting, 8; Gospel Seekers Interest Group, 8.

**GRACE LUTHERAN CHURCH**  
Missouri Synod (Thomas Mandenhall, pastor) (Jon Vogel, associate pastor)  
Thursday: Grace bowling league, 7 p.m.  
Sunday: Lutheran Hour, broadcast KTCH, 7:30 a.m.; Sunday school and Bible classes, 9; worship, 10; adult information class, 7:30 p.m.  
Monday: Evangelism committee, 7:30 p.m.  
Tuesday: Gamma Delta, 7 p.m.; Wednesday: Men's Bible breakfast, 6:30 a.m.; Gamma Delta, 7 p.m.; junior choir, 7; midweek school, 7:30; senior choir, 8.

Tuesday: Bible study, 9:15 a.m.  
Wednesday: Visitation, 1:30 p.m.; eighth grade confirmation, 6; choir, 7; worship and music committee, 8:30.

**ST. ANSELM'S EPISCOPAL CHURCH**  
422 E. 10th St. (James M. Barnett, pastor)  
Sunday: Morning prayer, 10:30 a.m.

**ST. MARY'S CATHOLIC CHURCH**  
(Thomas McDermott, pastor)  
Friday: Mass, 11:30 a.m.  
Saturday: Mass, 6 p.m.; confessions, 5:30 to 6 and 7 to 8 p.m.  
Sunday: Mass, 8 and 10 a.m.; Tuesday: Mass, 11:30 a.m. and 8 p.m.; CCD classes, grades 1-6, 4:15 to 5 p.m.; grades 7-12, 7 to 8 p.m.

## Concert Postponed

A concert by the Wayne Community Choir, which was to have been held this Friday evening in Ramsey Theater on the Wayne State campus, has been postponed.

A spokesman for the choir said a new date for the concert will be announced.

The Community Choir is open to anyone in the region who enjoys singing. The choir is under the direction of Matthew Smith. Accompanist is Bonnie Siefken.

## Sunshine Club Plans For Christmas Party

Sunshine Home Extension Club, their husbands and other guests, will meet for a Christmas supper at 6:30 p.m. on Nov. 22 at the Black Knight in Wayne.

Mr. and Mrs. Chris Tietgen will entertain the group in their home following the supper.

Plans for Christmas were made during the group's regular monthly meeting on Nov. 6 in the home of Mrs. Gilbert Krallman. Roll call was "My First Ride in a

Train or Plane," and members sang "Blessed Be the Tie That Binds."

Information on sodium was presented in a lesson by Mrs. Thelma Day. Mrs. Irene Geeve gave the health care lesson on keeping children away from harmful drugs and medicines.

Next regular meeting will be a dessert luncheon on Dec. 3 in the home of Mrs. Orville Nelson.

**FIRST BAPTIST CHURCH**  
(Edward Carter, pastor)  
Sunday: Church school, 9:45 a.m.; worship, 11; evening fellowship and worship, 7 p.m.; singspiration (third Sunday of each month), 7 p.m.  
Wednesday: Ladies Bible study (first Wednesday of each month), 7:30 p.m.; diaconate meeting (second Wednesday of each month), 7:30 p.m.; American Baptist Women (third Wednesday of each month), 7:30 p.m.

**IMMANUEL LUTHERAN CHURCH**  
Missouri Synod (Mike Tauscher, vicar)  
Sunday: Sunday school and youth Bible class, 9 a.m.; worship with holy communion, 10.  
Monday: Wakefield Ministerium, 10 a.m.  
Tuesday: Ladies Aid visits Wakefield Health Care Center, 2:30 p.m.; adult Bible class, 7:30.  
Wednesday: Confirmation class, 4:30 p.m.

**ST. PAUL'S LUTHERAN CHURCH**  
(Doniver Peterson, pastor)  
Thursday: LCW Sewing Day, 1:30 p.m.  
Saturday: Community children's choir, 2:30 p.m.  
Sunday: Sunday church school and adult study, 9:15 a.m.; worship, 10:30.  
Monday: Church Council, 8 p.m.  
Wednesday: LCW General, 2 p.m.; seventh and ninth grade confirmation, 7; eighth grade confirmation, 8; senior choir, 8.

## Museum Open

The Wayne County Historical Museum at Seventh and Lincoln Sts. will be open this Sunday from 2 to 4 p.m.

Hosts will be Mr. and Mrs. Howard Witt and Wilma Johnson.

## 56 Take Part in Community Day Services Friday

Fifty-six persons took part in World Community Day services Friday at St. Paul's Lutheran Church in Wayne, sponsored by Wayne's Churchwomen United.

Special music was furnished by Mrs. Norman Melton and Mrs. Rod Varilek, accompanied by Mrs. Scott Rudledge.

Mrs. Thomas Stevenson spoke on hunger and the food pantry. Also speaking were Mrs. William Wilson on environment, the Rev. Doniver Peterson on mental health, and Mrs. Orville Sherry on the family.

Next meeting of Churchwomen United will be World Day of Prayer on March 6 at St. Mary's Catholic Church.

**FIRST CHURCH OF CHRIST**  
East Highway 35 (John Scott, pastor)  
Sunday: Sunday school, 9:30 a.m.; worship and children's church, 10:30.  
Wednesday: Family Night, 7 p.m.; college career fellowship, 8:20.

**INDEPENDENT FAITH BAPTIST CHURCH**  
208 E. Fourth St. (Bernard Maxson, pastor)  
Sunday: Sunday school, 10 a.m.; worship, 11; evening worship, 7:30 p.m.  
Wednesday: Bible study, 7:30 p.m.  
For free bus transportation call 375-3413 or 375-2358.

**THEOPHILUS UNITED CHURCH OF CHRIST**  
(Gail Axen, pastor)  
Sunday: Worship, 9 a.m.

## Thanksgiving is Program Topic

Central Social Circle met in the home of Darlene Gafhle Monday afternoon for a Thanksgiving program.

Seven members responded to roll call with what they were most thankful for during the past year. Verdelle Reeg read an article, entitled "First American Covered Dish Dinner."

Leora Austin and Lillian Granquist were named to a committee

## Villa Residents to Mark Birthdays

Residents of Villa Wayne will observe their November birthdays during a potluck supper in the Villa community room on Friday, Nov. 21.

Residents are asked to note that the supper is being held one week early.

Twenty-three residents attended a recent Halloween party at the Villa. Cards furnished entertainment, followed with a lunch of pumpkin pie, apples, candy and coffee.

Leona Foster, a resident of Villa Wayne, entered Providence Medical Center last week for observation and treatment. Louise Spittgerber is spending the winter at Wayne Care Centre.

## Food Processors Topic of Sessions

Persons thinking about purchasing a food processor or have one and would like to learn more ways to use it, are invited to attend one of the "Lunch 'N Learn" sessions being sponsored by the Thurston County Extension Service.

Sessions will be held over the noon hour (12:10 to 12:50 p.m.) today (Thursday) at the Pender Fire Hall and Thursday, Nov. 20, at Trinity Lutheran Church in Walthill.

Participants are asked to bring a sack lunch. Coffee will be provided.

## Baby Shower

Mrs. Tim (Leslie) Bebee of Wakefield was honored during a baby shower Oct. 27 in the home of Mrs. Lesa Jensen. Co-hostess was Mrs. Lori Peters.

Fifteen friends and relatives attended. Decorations, in pink and blue, included a Teddy Bear centerpiece. Entertainment included pencil games and baby pictures of each guest.

## JEHOVAH'S WITNESSES

3rd and Pearl Sts.  
Saturday: Public talk, 7:30 p.m.; watchtower study, 8:20, at Wayne Woman's Club room.  
Tuesday: Theocratic school, 7:30 p.m.; service meeting, 8:30, at Wayne Woman's Club room.  
For more information call 375-2396.

## UNITED PRESBYTERIAN CHURCH

(Robert H. Haas, pastor)  
Sunday: Choir, 9 a.m.; worship, 9:45; coffee and fellowship, 10:35; church school, 10:50.  
Wednesday: UPW Sewing Day, 9:30 a.m.; United Presbyterian Women, 2 p.m.; choir, 7.



● Flight Instruction  
● Aircraft Rental  
● Aircraft Maintenance  
● Air Taxi Service

**WAYNE MUNICIPAL AIRPORT**  
ALLEN ROBINSON  
East Hwy. 35 Ph. 375-4644

### Fish & Chicken November 14

This is the last fish fry until after the first of the year!



**RON'S BAR**  
Carroll, Nebraska

**NEW! Mini Salad Bar on Week-ends except Fish Fry Fridays!**

## Just For Him!

# FALL SUIT SALE

### 85 SUITS

This Season's Good Looking

**THREE-PIECE MODELS TWEEDS or WOOLS**  
And Woven Polyesters

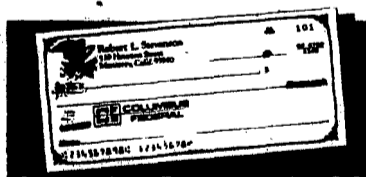
Regular Prices of \$160 to \$185  
Sizes 37 Regular to 46 Long

**NOW ONLY \$110<sup>80</sup>**

ENTIRE STOCK OF WINTER JACKETS SUBURBAN COATS AND FASHION TOP COATS **20% OFF**

The **RUSH MAIL**  
218 Main (402) 375-3795  
Wayne, NE.

Be Sure To Stop In Thursday at 8 p.m. for the \$1,000 Give-Away



Available January 2, 1981

Columbus Federal Interest Bearing Checking Accounts

Make your New Year's resolution now to earn on all your **\$100** in 1981.

Columbus Federal's interest bearing accounts will be available **FREE** for all our Nebraska customers. You'll have the convenience and pleasure of receiving the same locally owned care, courtesy and service on your **FREE** account that you receive now on your savings account and home loans.

**PLUS** one super bonus, your Columbus Federal **FREE** account balance will earn 5 1/4% interest daily. Plan now to earn the double bonus of 5 1/4% interest checking and our famous Columbus Federal service.

**CF COLUMBUS FEDERAL**  
COLUMBUS FEDERAL BANK

## EXTRA Grand Opening

### November 15 & 16

## Granny's Spoil Center

has added

### "A TOUCH OF CLASS"

Featuring fashions for the teenager, junior, missy and "Granny's" Junior sizes 3-15 include sweaters, vests, skirts, dresses, blouses and jeans. Misses 8-20 includes jeans (for the fuller cut figure), pant suits and dress. **ALSO**—jewelry, gloves, scarves and lingerie. Come and shop for your children at "Granny's" and spoil yourself at "A TOUCH OF CLASS."

Free coffee and cookies—drawings for \$20.00 gift certificate and a pair of junior jeans!

See you at our Grand Opening

Saturday—November 15th  
8 a.m. - 5 p.m.

Sunday, November 16th  
1 p.m. - 5 p.m.

## Granny's Spoil Center

Located at 101 Hillcrest in the basement of Mary's Salon of Beauty, Laurel, NE.



# Speaking of People



## American Legion Auxiliary Meets

Seventeen members of the American Legion Auxiliary met Nov. 3 at the Wayne Vet's Club. President Helen Siefken opened the meeting, with the advancing of the colors by Marguerite Hofeldt and Emma Soules.

Chaplain Mary Kruger read the Thanksgiving prayer, followed with the flag salute and singing of "The Star Spangled Banner." The unit repeated the preamble to the constitution of the American Legion Auxiliary.

Community chairman Julia Haas reported on the Veteran's Day parade held Nov. 11, followed with a potluck dinner at the Vet's Club.

It was announced that a Christmas potluck supper for all area veterans is scheduled Dec 7 at 6 p.m. at the Vet's Club. Social hour begins at 5 p.m.

Leadership chairman Mary Kruger explained the significance of the auxiliary emblem and what each point of

the five stars represents. Membership chairman Eveline Thompson reported 97 paid-up members.

Louise Kahler, veterans affairs and rehabilitation chairman, announced that the local auxiliary will purchase Christmas gifts for two residents of the Wayne Care Centre.

The auxiliary is planning to decorate a window at Gerald's Decorating Center in recognition of National Education Week, Nov. 16-26, according to education chairman Marguerite Hofeldt. The auxiliary also is planning to give the book "Need a Lift" to the Wayne-Carroll High School library. The book focuses on helping students prepare for future education.

Neva Lorenzen, safety chairman, reported on winter survival techniques for persons caught in a snowstorm.

The auxiliary received letters from Mrs. Robert Chaloupka, department national security

chairman; Florence Cox, department education chairman; and Grant Ellingson, chairman of this year's United Way Fund drive in Wayne.

Thank you notes were received from Marie Brugger for the anniversary card they received and from Emma Soules, who is recuperating in her home.

Wayne women attending the Wayne County Convention last month at Winside were Mary Kruger, Helen Siefken, Verona Bargholz, Louise Kahler and Eveline Thompson.

Awards received by the local auxiliary at the convention included superior for carrying forward all department programs; a national salutation for obtaining 100 cents in membership; and a certificate of appreciation for giving 50 cents per member to the Little Red Schoolhouse program.

The local auxiliary also received certificates for their prayer book and publicity book, and \$2 for their poppy centerpiece.

Women receiving veterans affairs and rehabilitation certificate merits for 75 hours of volunteer work were Marie Brugger, Mary Kruger and Eveline Thompson. Mrs. Thompson also was elected vice president of the Wayne County Convention

The Nebraska Veteran's Home Volunteer Appreciation Day was held Oct. 26 in Norfolk. The Wayne unit was awarded a certificate for volunteer service at the Norfolk home. Emma Soules and Eveline Thompson received their 30-hour pins. Receiving certificates for their volunteer service were Lottie Longnecker and alternate national executive man Harold Thompson.

Attending the program in Norfolk were Mary Kruger, Louise Kahler, Emma Soules, Lottie Longnecker, Eveline Thompson and Harold Thompson.

The Wayne auxiliary has donated \$45 as their Christmas gift assignment for the Veteran's Hospital. A \$20 donation also was made to Gifts for Yanks.

The auxiliary is planning to send Christmas cards to shut-in members and those hospitalized.

Chaplain Mary Kruger read the prayer for peace, followed with the singing of "America," accompanied by Evelyn Carlson. The meeting closed with the Little Red Schoolhouse march.

Serving were Mrs. Don Sberahn, Dorothy Parenli and Mrs. Larry Gamble.

There will be a \$1.50 Christmas gift exchange at the next meeting, Dec. 1 at 8 p.m. at the Vet's Club.

## Lots of Stuffers

THE WAYNE COUNTY HISTORICAL mailing committee met in the community room at Columbus Federal Savings and Loan in Wayne last week to stuff envelopes. More than 25 committee members stuffed over 3,400 letters requesting Wayne Countians to submit their family histories for the new county history book. Residents should

receive the letters this week. Persons who do not receive a letter and would like one are asked to contact Clete Sharer, 375 3835. Among those who helped prepare the mailing last week were, pictured from left, Mrs. Gordon Baird, Mrs. Ernest Siefken, publication consultant Bob Jonson, Eleanor Edwards, Mrs. Edith Cook and Bessie Baier.

## Darin Jensen Baptized Sunday

Darin Ray Jensen, son of Mr. and Mrs. Dennis Jensen of Wayne, was baptized Sunday by the Rev. Daniel Manson at the Redeemer Lutheran Church in Wayne.

Darin's godparents are Mr. and Mrs. Dennis Luff, Wayne. Dinner guests afterward in the Jensen home included Mr. and Mrs. Don Luff and family, Mr. and Mrs. Earl Jensen, all of Wayne, and Mr. and Mrs. Dean Jensen and family of Winside.

## Photographers Invited To Participate in Show

All professional and amateur photographers in the region are invited to participate in a photography show sponsored by the Wayne Regional Arts Council. The show will be held at the Mineshaft Mall in Wayne on Nov. 20, 21 and 22.

Mrs. Jane O'Leary, a spokesman for the Arts Council,

said cash awards of up to \$20 will be given for one or more entries that are judged "Best of Show." Categories will be posted on the day of entry.

Any works may be priced to sell. The photographs will be supervised or under lock at all times during the show.

Persons wishing to display their photographs are asked to call Mrs. O'Leary, 375 2335, or Marla McLean, 375 1986.

The Arts Council asks that photographs be brought to the show Thursday, Nov. 20, between 10 a.m. and 1 p.m. They should be matted and/or framed and ready for display.

Information required on labels, which will be provided, includes title, media, photographer, and price if the photo is for sale.

The public is invited to attend the show from 6 to 9 p.m. Thursday and from noon to 5 p.m. on Friday and Saturday. Entries are to be picked up between 5 and 6 p.m. Saturday.

## Missionaries Speaking Monday Night in Wayne

The Rev. Art and Dr. Kathy these missionaries home on through from Bangladesh, will speak in Wayne Monday night, Nov. 17.

Their talk will follow a 7 p.m. dinner at the Black Knight. The program is sponsored by Joy in the Evening, an interdenominational couples fellowship.

Persons planning to attend the dinner and program are asked to make their reservations in advance with Merlin Heinemann, 375 1485.

Art and Kathy are both graduates of Dana College following graduation from college. Art completed his seminary

training at Central Seminary in Fremont, and was ordained into the American Lutheran Church. He served congregations in Council Bluffs, Iowa and Omaha.

They have both served for the past 10 years as the project director and medical director respectively of the LAMB Project. The vision of the LAMB (Lutheran Aid to Medicine in Bangladesh) Project is to include community health outreach as well as an integrated evangelistic appeal.

Special music Monday evening will be provided by the Rev. David Kramer of Christ the Servant Lutheran Church, Norfolk.

## Beryl Harvey Minerva Hostess

Beryl Harvey presented a program on native Americans at the Monday afternoon meeting of Minerva Club.

Thirteen members attended the meeting in the home of Mrs. Frances Johnson. Miriam Witt led a discussion of colonial

recipes. Next meeting will be a 12:30 p.m. Christmas luncheon on Dec. 8 in the home of Ida Moses. Co-hostess is Marvel Corbit.

**DRAWING WINNERS**

Linda Carr — Wayne  
Wok

Gerry Swinney — Wayne  
Wine Rack

Nanna Peterson — Wayne  
Vertical Roaster

Betty Morris — Carroll  
Christmas Cookie Jar

Be Sure To Stop In Thursday at 8 p.m. for the \$1,000 Give-Away

**THE CUPBOARD, INC.**  
307 Pearl

## Mrs. Heinemann BC Club Hostess

Mrs. Harry Heinemann entertained the BC Club Monday afternoon.

Five members answered roll call with what they are thankful for. Receiving prize prizes were Mrs. Warren Baird and Mrs. Glenn Wade.

Next meeting will be the annual Christmas party at 2 p.m. on Dec. 5 at Jeff's Cafe. Members are asked to bring cookies for lunch.

**CALENDAR OF EVENTS**

**THURSDAY, NOVEMBER 13**  
T and C Club, Mrs. Earl Bennett, 2 p.m.  
Sunny Homemakers Club, Frances Koch, 2 p.m.  
Villa Wayne Tenants Club weekly meeting, 2 p.m.

**FRIDAY, NOVEMBER 14**  
Villa Wayne Bible study, 10 a.m.  
Wayne Federated Woman's Club, Woman's Club room, 2 p.m.  
Tops Club, West Elementary School, 7 p.m.

**SATURDAY, NOVEMBER 15**  
Psi chapter Delta Kappa Gamma brunch, United Presbyterian Church, 9:30 a.m.  
Wayne Community Hospital Auxiliary's annual fall bazaar, Wayne-city auditorium, 10 a.m. to 4 p.m.

**MONDAY, NOVEMBER 17**  
Acme Club, Bonnadell Koch, 2 p.m.  
WWI Auxiliary covered dish supper, Vet's Club, 5:30 p.m.  
FOE Auxiliary, 8 p.m.  
Wayne Community Theater, Columbus Federal, 8 p.m.

**TUESDAY, NOVEMBER 18**  
LaPorte Club, Almeda Luschen, 2 p.m.  
Progressive Homemakers Club, Alma Splittergerber, 2 p.m.

**WEDNESDAY, NOVEMBER 19**  
St. Paul's Lutheran Churchwomen, 2 p.m.  
Pleasant Valley Club, Mrs. Erwin Fleer, 2 p.m.

**THURSDAY, NOVEMBER 20**  
Immanuel Lutheran Ladies Aid Club 15 touring craft shop at Pender  
Happy Homemakers Home Extension Club, Mrs. Gary Blecke, 1:30 p.m.

**CHILDREN'S BOOKS**

Just Arrived — A special assortment of Children's Books, ideal Christmas gifts for kids of all ages.

Choose From:  
• Sesame Street  
• Richard Scary  
• Dr. Seuss  
• Berenstain Bears

**UNDER \$5.00** For these beautiful Hard Bound Children's Story Books.

**Wayne Campus Shop** Mon-Thurs. 9:00-5:30  
Fridays 10:00-5:00

Downstairs at the Wayne State College Student Center Building Phone 375 2967

**OVER 100 YEARS**  
Of Smiling and Cheerful Experience, Serving the Wayne Care Centre residents.

**The Wayne Care Centre**

For more information Call Collect 1-(402) 375-1922

918 Main Street Wayne, NE 68787

Hal Lindsey's Best-Selling Book is now an incredible film.

**THE GREAT LATE PLANET EARTH**

Starring ORSON WELLES Hosted by HAL LINDSEY

COMING SOON  
7 DAYS ONLY  
Starts Friday, Nov. 14-20

8:10:30 Except  
Fri-Sat-Tue, 7:30 & 9:15  
Wednes 2 p.m. Sunday  
Bargain Night Tuesday

**Gay Theatre**

**PRE-THANKSGIVING SALE**

A rotating shower of power that cooks more evenly and cooks most foods faster than ever before!

**ROTAWAVE**

SO FOODS COOK MORE EVENLY!  
Even rows of cookies or several potatoes cook more evenly than ever before.

MOST FOODS COOK FASTER!  
Some foods are cooked 50% and much more than twice as fast.

COOKS MORE CONVENIENTLY!  
Most foods require no turning. Because the Rotawave antenna rotates microwaves through the food.

**BETTER FOOD QUALITY!**  
Breads, cakes, roasts, ribs, dishes, turn out lighter, fluffier. Meats, brown more evenly.

**AMANA TOUCHMATIC II** Model RR-10A

STARTING AS LOW AS **\$289.00**

**FREE 12 LB TURKEY WITH EVERY MICRO WAVE PURCHASED NOW UNTIL THANKSGIVING!!**

ALSO

WHEN YOU PURCHASE ANY AMANA RR MODEL YOU RECEIVE:

- PIZZA CRISPER
- COUNTRY COOKER
- 6 1/2 IN. BROWNING SKILLET ABSOLUTELY FREE

Be Sure To Stop In Thursday at 8 p.m. for the \$1,000 Give-Away

**AMANA TOUCHMATIC II Radaranova**

**Charlie's Refrigeration**

311 Main St. Phone — 375-1811

# Speaking of People

## Janine Tiedtke November Bride

Altar flowers of white daisies and huckleberry carnations and candelabras entwined with white daisies and greenery decorated Grace Lutheran Church in Wayne for the Nov. 1 wedding ceremony uniting in marriage Janine Tiedtke and Jerry Stewart.

The bride is the daughter of Mr. and Mrs. Russell Tiedtke of Wayne. She was graduated from Wayne-Carroll High School in 1979 and attended Wayne State College one year.

The bridegroom, who is the son of Mr. and Mrs. Jerald Stewart of Waterbury, was graduated from Allen High School in 1978. He is employed with Wayne Chase Plumbing in Allen.

Guests attending the ceremony were registered by Dawn Tiedtke of Cedar Rapids, Iowa and were ushered into the church by Rick Stewart and Kevin Hoenstein, both of Waterbury. Gene Mari of Jackson and Larry Gotch of Allen.

Drew and Chad Tiedtke distributed programs.

The Rev. Tom Mendenhall of Wayne officiated at the 6 o'clock double ring ceremony. Wedding music included "God, A Woman and a Man," "Wedding Song" and "The Lord's Prayer," sung by Gwen Davie of Wayne and accompanied by Terri Hankins of Stanton.

The bride appeared at her father's side in a white satin gown with a vestee affect. The bodice and long fitted sleeves were trimmed in Chantilly lace and accented in Alencon lace. The raised waistline led to a full pleated skirt also trimmed in Chantilly lace. Her gown was complimented with a small brim hat of Alencon lace swept up on the left side by a silk rose.

The bride carried a nosegay of sterling silver roses, pink miniature carnations and white daisies accented with wine baby's breath and pink satin streamers.

The bride's honor attendant was Sherri Claussen of Wayne. Bridesmaids were Joan Schaefer, Tracy Keating, Teresa Tiedtke and Lori McClain, all of Wayne.

Their matching huckleberry gowns were designed with high necklines with an embroidered lace inset and fluttery sleeves. The full skirts fell from blouses

waistlines accented with tie bells. Each carried a bouquet with a sterling silver rose surrounded with pink miniature and white daisies, wine baby's breath and pink and white streamers.

Flower girl and ring bearer were Tammy Stewart of Waterbury and Matthew Schaefer of Wayne.

Candles were lit by Darin Tiedtke of Cedar Rapids, Iowa and Troy Stewart of Waterbury.

Randy Sullivan of Martinsburg served as best man, and groomsmen were Steve Stewart and Dale Maggart, both of Waterbury, Rick Chase of Martinsburg and Brad Chase of Allen.

The bridegroom was attired in a white tuxedo with white satin lapels. He wore a sterling silver rose boutonniere. His attendants wore silver gray tuxedos with white and black ruffe trimmed shirts.

Both mothers of the couple selected primrose polyester dresses for the marriage of their

children and wore white orchid corsages.

Mr. and Mrs. Robert Tiedtke of Cedar Rapids, Iowa, Mary Stewart of Hubbard and Dick Smith of South Sioux City greeted the 235 guests who attended a reception in the church basement following the wedding ceremony.

Gifts were arranged by Amy Tiedtke of Pilger and Julie Tiedtke of Wayne.

The wedding cake was cut and served by Nicki Tiedtke and Sherry Murray, both of Wayne, Bonnie Tiedtke of Cedar Rapids, Iowa and Jodi Flier of Sioux City. Mary and Dola Husmann, both of Wayne, poured. Punch was served by Lisa Brandt of Wayne and Julie Munson of Wakefield.

Waitresses were Stacy Smith and Kelly Smith, both of South Sioux City, Jeanne Kruse and Barbara Kruse, both of Des Moines, Iowa, and Nancy Mier of Richmond, Minn.

The newlyweds are at home in Waterbury.



MR. AND MRS. JERRY STEWART

## Bazaar Saturday

Doors to the Wayne city auditorium will open at 10 a.m. this Saturday and will remain open until 4 p.m. for the Wayne Community Hospital Auxiliary's annual fall bazaar.

Donna Schumacher and Sheryl Marra are co-chairmen for the event, which each year attracts hundreds of area shoppers.

In addition to the hundreds of homemade gift items, the auxiliary will be serving a lunch throughout the day of homemade vegetable and chili soup, sandwiches and desserts.

There will be drawings at 2 p.m. for a queen size quilt made by women of the Redeemer Lutheran Church, an afghan made by Marvel Corbit, a Christmas tree skirt made by Melba Wait, and two dolls made by Sheryl Marra. Winners need not be present at the time of the drawing.

Mary Nichols, R.N., also will be distributing Vials of Life at the bazaar. The Vials of Life project in Wayne County is sponsored by the Hospital Auxiliary and Wayne County Home Extension Clubs.



## Newlywed Honored

Thirty-three guests from Wayne, Winslow, Pilger, South Sioux City, Elkhorn, Concord, Laurel and Stanton honored Mrs. Brent (Jackie Frey) Holdorf with a miscellaneous bridal shower Oct. 26.

Guests attending the fête in the community room at Columbus Federal Savings and Loan, in Wayne, were registered by Holly Holdorf. Decorations were in blue and white.

Joni Holdorf, mistress of ceremonies, had guests introduce themselves by telling where they met their husbands. Readings were given by the bridegroom's sisters, Tammy Rees and Kathy Jensen.

Tiffany Johnson and Shannon Holdorf were gift carriers. Assisting the bride in opening her gifts was Mrs. Jim Rees. Tammy Rees poured and Joni Holdorf served punch.

On the shower committee were Joni Holdorf, Tammy Rees, Kathy Jensen, Barb Holdorf, Verita Johnson and Dolores Erwin.

Mr. and Mrs. Holdorf were married Oct. 3 in Yankton, S. D. Both are employed at Nebraska Fiberglass in Wayne. Parents of the couple are Mr. and Mrs. Jack Frey of Wayne and Mr. and Mrs. Willard Holdorf of rural Pilger, formerly of Wayne.

## Luefh-Victor Wed

ST. PAUL'S LUTHERAN Church in Emerson was the site of a double ring ceremony Oct. 24 uniting in marriage Karen Luefh and Mark Victor. Parents of the couple are Mr. and Mrs. Alvin Luefh of Emerson and Mr. and Mrs. Roland Victor of Wayne. The newlyweds are residing at 618 Logan St. in Wayne. The bride, a 1977 graduate of Emerson-Hubbard High School, is employed at Pamida Discount Center in Wayne. The bridegroom was graduated from Wayne-Carroll High School in 1977 and plans to graduate from Wayne State College in December 1980. He is interning at the Milton G. Wajdbaum Co. in Wakefield.

## OES Kensington

OES Kensington met Saturday afternoon at the Masonic Temple with hostesses Phyllis Cauwe and Evelyn Woods. The program was given by Pauline Merchant.

Next meeting will be a 1 o'clock luncheon on Dec. 13 at the Masonic Temple.

## Ponca Hosting RNE Deanery

The RNE Deanery fall meeting will be held at St. Joseph's Catholic Church in Ponca on Wednesday, Nov. 19. Registration is at 1 p.m.

Margaret Beacom, RNE Deanery president, said Women of the Year nominations are being asked for.

## Homemakers Sharing Holiday Ideas at Pender

Area homemakers interested in learning about new ideas to make their holiday season more special should mark Monday, Nov. 17, on their calendars.

The Thurston County Extension Service has planned a day full of idea sharing among homemakers from Thurston County as well as Hubbard, Bancroft and the University of Nebraska.

The public is invited to attend any or all of the free sessions to be held at the Pender Fire Hall, according to Susan Strah, County Extension Agent. Participants are asked to bring their own sack lunch. Coffee will be provided.

All patterns and recipes demonstrated throughout the day will be provided to all participants.

Working women are especially invited to attend sessions over the noon hour. Session times and leaders are as follows:

- 10:45-11:15 — "Needle Crafts for the Home" by Jenny Pierce.
- 11:15-11:45 — "Party Pork" by Lynn Lussler.
- 11:45-12:10 — Lunch break.
- 12:10-12:30 — "Using Fresh Holly and Evergreen" by Amy Cooper.
- 12:30-12:55 — "Crocheted Christmas Ornaments" by Anna Ahlers.
- 12:55-1:30 — "Christmas With Pigskin" by Carol Ann Schoch.
- 1:30-3:00 — "Gifts From Your Kitchen" by Theresa Shaffer, extension specialist.

**A PHOTO GREETING CARD Says it all!**

Photo Greeting Cards are the perfect way to say Happy Holidays in words and pictures.

Photo Greeting Cards designed for Fox Photo by Hallmark

12 for \$4.97

Includes cards, color prints and envelopes.

Boundless timeless Photo Greeting Cards put your tidings into pictures

25 for \$9.75

Includes envelopes

**SAV-MOR DRUG**

THE LOFT Walgreen AGENCY

1027 MAIN PHONE 325-4443

Joanie Designs

Joanie Burt 375-4892 518 Lincoln - Wayne NE

Presents:

## "Winter Wonderland"

Everyone is Invited Saturday and Sunday, November 15-16

Winter Wonderland Hours:

Saturday 9 a.m. to 6 p.m.  
Sunday 11:30 a.m. to 6 p.m.

Joanie's "Winter Wonderland" display will feature a wide array of gift and holiday items. Pictured above hand carved pyramid, owl, figurines and a silk holiday floral.

Serving Punch, Coffee & Cookies Register for FREE Gifts

WOODEN ORIGINALS

- Navitty Scenes
- Smokers & Incense Burners
- Ornaments
- Pyramids
- Wooden Miniature Figures

All Are Hand Carved in West Germany

Looking For MEN'S GIFTS?

Joanie has: Desk Sets, Paper Weights, Bookends, Brassware, Occupational Figurines and More!

AUTHENTIC Williamsburg Arrangements

'The Charm of Old Virginia'

The Arrangements contain FRESH greenery, FRESH fruits, FRESH berries

PLACE YOUR ORDERS NOW!!

CHRISTMAS WREATHS & FLORALS Fresh or Artificial

SHOP EARLY JOANIE'S GIFT SHOP IS FULL

Community Theatre Meeting Scheduled

A general membership meeting of the Wayne Community Theatre will be held Monday, Nov. 17, at 8 p.m. in the Columbus Federal community room.

The agenda will include the treasurer's report, a report on the board of directors' meeting since the last general membership meeting, reports from "Fiddler on the Roof" committee chairpersons, approval of the organization's bylaws, and announcements regarding the spring play.

All members, and persons interested in becoming members, are encouraged to attend. Refreshments will be served.

Clubwomen Tell Winter Dislikes

Ten members of Logan Homemakers Club met last Thursday in the home of Mrs. Conrad Welschhauser, responding to roll call with what they dislike about winter.

Guests were Mrs. Adolph Claussen, Mrs. Jerry Welschhauser and Mrs. Bob Welschhauser. The group sang "Prayer of Thanksgiving," led by Mrs. Ben Hollman.

Receiving pitch prizes were Mrs. Jerry Welschhauser, Mrs. Wilbur Nolte and Mrs. Ben Hollman.

Mrs. Laverne Wischoff will be the Dec. 4 hostess at 2 p.m.

COOKING SCHOOL

Tonight (Thursday) 7 p.m. to 9 p.m.

Learn the latest in Sharp Microwave Oven Cooking at T&C Electronics.

216 Main in Wayne 375-4484

The \$1000 Bonus Drawing will be announced at 8 p.m. on Wed.

Nov. 21 OPEN HOUSE Nov. 21

I am Having My Yearly Open House — Giving You All An Opportunity to Make Your Christmas Gift Selections, from Home Care Items used Every Day That Are 100% Guaranteed.

— FOR THIS ONE DAY ONLY — 15% DISCOUNT —

HEALTH PROBLEMS ARE FORCING ME TO CUT DOWN MY INVENTORY!!

— "CHINA PAINTING" —

Please Her This Year With a Gift Painted on Real China or Porcelain by an Artist

— I DO HAVE A NUMBER OF ITEMS TO CHOOSE FROM —

— DOOR PRIZES —

November 21 from 9:00 a.m. to 9:30 p.m.

MRS. CHRIS TIETGEN

722 Sherman Wayne, Nebr.

## Experience Fall With Queen's X!

Where you can stop feeling guilty about being a large-sized woman and concentrate on being the beautiful and attractive person you are.

No matter what the season, Queen's X offers the latest fashions and colors specially styled to make you look great and feel beautiful!

Emily, Delta, Evelyn and Anita offer personalized service to help you select the clothes to present your most attractive image.

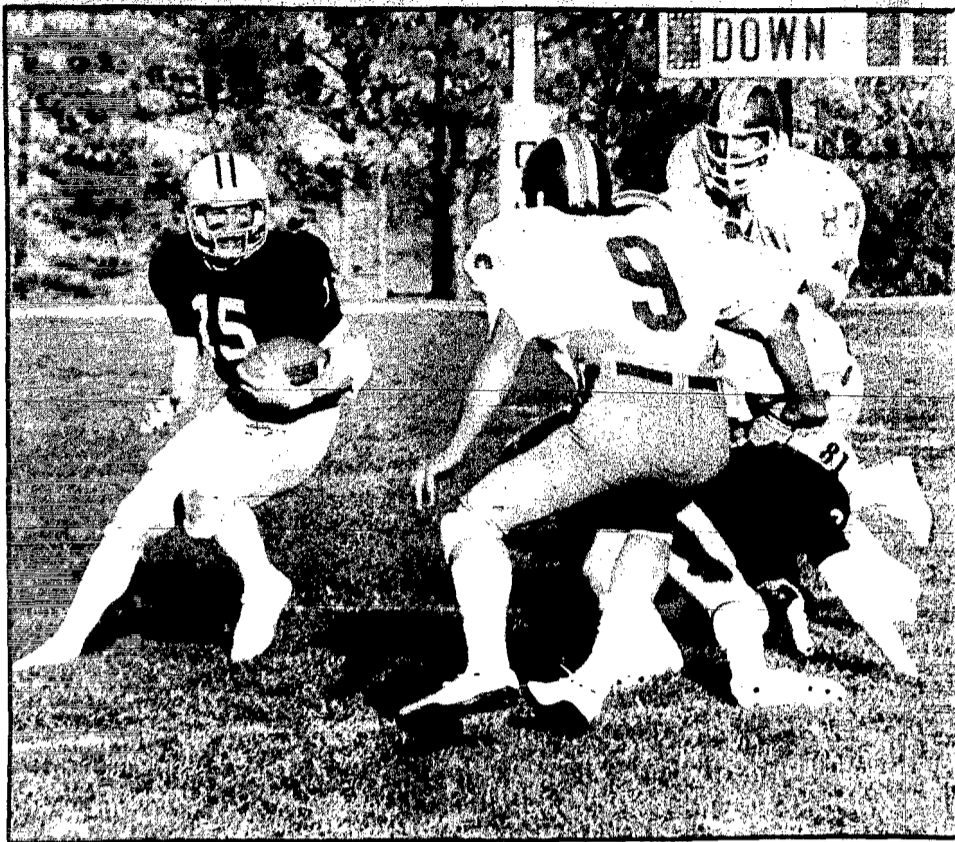
Sizes 14½ and Over Layaway, Master Card and Visa Welcome.

25% off selected fall merchandise, beginning Nov. 5

# Queen's X

Columbus — 1367 26th Ave. 694-0963 Grand Island — 305 W. Third 384-3611-0968 Norfolk — 107 S. Fourth 385-3777

# Sports



RANDY FRINK looks for some running room against Kearney State but can't find much as Kearney defenders close in. The Wayne State Wildcats ended their season with a 30-7 loss to the Central States Intercollegiate Conference champion Antelopes, Saturday. The other Wildcat pictured is Jim Ingram (81).

## Antelopes Vault Past WSC; Gain NAIA Playoff Berth

Kearney State, ranked ninth in the NAIA football ratings, secured a berth in the national playoffs by thumping intra-state conference rival Wayne State 30-7, Saturday afternoon at Wayne State Memorial Field. The Wildcats finished their season with a 3-4 record in the CSIC and 4-5 overall. The conference champion Antelopes enter post-season play with a 6-0-1 CSIC record and overall record of 8-1-1.

The Wildcats turned the ball over to Kearney seven times. Five of those turnovers resulted in Antelope scores. Kearney State struck twice in the first quarter to take an early unanswered lead. A fumble recovery and interception set up the two TD's. Both were scored by quarterback Dean Carstens.

In the second quarter, a high snap over punter Pat Maxwell's head resulted in another Kearney TD. Defensive end Jerry Calfelt recovered the loose ball in the endzone for the score. It was the second bad snap over the punter's head in the game. The first time, Maxwell gained control of the ball and got off a surprisingly successful punt.

On Wayne State's next possession, the Antelopes intercepted a pass intended for

Jeff Ingram. Mike Pilkington booted a 23-yard field goal in the closing seconds of the half for a 24-0 Kearney lead.

Early in the third quarter, the Lopers intercepted another Lade pass which set up a five-yard TD run by Luke Van Matre. Pilkington missed the PAT attempt as Kearney extended its lead to 30-0.

Wayne State broke the shutout midway through the fourth quarter on a 69-yard pass from sophomore quarterback Mike Warren to senior split end Jeff Ingram. Bart Emanuel added the PAT for a final score of 30-7.

Ingram finished the game with five receptions for 161 yards. He completed the year with nine touchdown pass receptions. Warren had the leading statistics of the three quarterbacks who saw action. He completed 8 of 14 passes for 156 yards.

Kearney State literally shutdown Wayne State's running game, holding the Cats to minus nine yards rushing.

Defensively, WSC was led by Steve Atamian with 18 tackles and Ron Berrie and Steve Dennis with 12 tackles each.

Steve Hawkins had nine tackles including two quarterback sacks, Jay Sandy had nine tackles and an interception, Tony Scudder

had nine tackles and a batted pass, Ken Kohlhoff had eight tackles, Kirk Schroeder had seven tackles including two quarterback sacks, and Ron Gilbert had an interception, a batted pass and six tackles including two quarterback sacks.

Kearney	14	10	4	0-30
Wayne State	0	0	0	7-7

	W	L	T
First downs	9	21	
Rushing yds.	-9	221	
Passes	12-28-4	9-19-2	
Passing yds.	184	87	
Total yds.	175	311	
Fumbles-lost	3-3	3-0	

Central States	W	L	T
Kearney State (8-1-1)	6	0	1
Pittsburg St. (7-3)	5	2	0
Fort Hays (4-2-2)	3	2	2
Mo. Southern (5-3-1)	4	3	0
Mo. Western (5-3-2)	3	3	1
Wayne State (4-5)	3	4	0
Emporia State (2-8)	1	6	0
Washburn (2-8)	1	6	0

### Wayne Going Strong

## Swimmers Win 87 Ribbons

Wayne's Swim Club won 87 ribbons in the Columbus Swim Meet, Sunday.

Wayne competed against clubs from Hastings, Lincoln, Omaha, Grand Island and Columbus. Thirty-six swimmers participated for Wayne.

Next competition for the Wayne Swim Club is scheduled Dec. 6 in the Lincoln YMCA Meet at Lincoln East High School.

#### Results

**First place winners**  
Karl Luff, 8 and under 25-yard back stroke; Cher Reeg, 8 and under 25-yard breast stroke; 25-yard freestyle: Penny Paige, 11 and 12 50-yard freestyle; Shell Schroeder, 11 and 12 200-yard IM; Heidi Reeg, 10 and under 50-yard fly; 50-yard free; Ann Perry, 10 and under 200-yard IM.  
Andy Hillier, 11 and 12 200-yard freestyle; Matt Hillier, 11 and 12 50-yard fly; 100-yard IM; Mike DeNaeyer, 8 and under 25-yard back; Jason Liska, 11 and 12 50-yard breast; Jim Thomas, 11 and 12 50-yard free; Jed Reeg, 10 and under 50-yard fly; 50-yard free; Eric Runestad, 10 and under 50-yard free.  
Relays: 11 and 12 girls 200-yard free relay; 10 and under girls 100-yard free relay; 8 and under boys 100-yard relay; 8 and under boys 100-yard relay; 10 and under boys 100-yard medley relay.

11 and 12 50-yard free; Gregg Elliott, 13 and 14 100-yard fly; Jed Reeg, 10 and under 100-yard I.M.

Relay teams: 11 and 12 boys 200-yard medley relay; 13 and 14 boys 200-yard medley relay; 10 and under boys 100-yard free relay; 13 and 14 boys 200-yard free relay.

**Third Places**  
Penny Paige, 11 and 12 50-yard breast; Scott Fuebberth, 8 and under 25-yard back; Matt Hillier, 11 and 12 50-yard back; Mike DeNaeyer, 8 and under 25-yard breast; Jason Liska, 11 and 12 50-yard free; Jim Thomas, 11 and 12 200-I.M.; Tim Fleming, 13 and 14 100-yard fly; Jed Reeg, 10 and under 50-yard back; Gregg Elliott, 13 and 14 200-yard I.M.; 100-yard back; Andy Hillier, 11 and 12 50-yard back.

**Fourth Places**  
Penny Paige, 11 and 12 200-yard free; 50-yard back; Cher Reeg, 8 and under 25-yard fly; Jason Liska, 11 and 12 200-yard free; 200-yard I.M.; Dan Wiseman, 8 and under 25-yard back; Greg DeNaeyer, 8 and under 25-yard breast; Gregg Elliott, 13 and 14

100-yard free; Tim Fleming, 13 and 14 200-yard I.M.

**Fifth Places**  
Eric Liska, 8 and under 50-yard back; Matt Hillier, 11 and 12 50-yard free; Holly Paige, 11 and 12 200-yard free; Kurt Runestad, 11 and 12 50-yard breast; Eric Runestad, 10 and under 50-yard free; Greg DeNaeyer, 8 and under 25-yard back; Robin Luff, 10 and under 100-yard I.M.

**Sixth Places**  
Debbie Reeg, 11 and 12 50-yard back; Robin Luff, 10 and under 50-yard free; Mike Hillier, 10 and under 50-yard free; Eric Liska, 10 and under 50-yard free; Tom Perry, 13 and 14 100-yard back; Robb Reeg, 10 and under 50-yard fly; Chris Hillier, 13 and 14 100-yard breast; Holly Paige, 10 and under 50-yard back; Jodi Dittman, 11 and 12 200-yard free; Debbie Reeg, 11 and 12 50-yard fly.

## Randy's Recap

According to Randy Hascell

WAYNE STATE had four players named to the first team of the Central States Intercollegiate Conference. All Conference football team. I learned Wednesday morning.

In a telephone call to Paul Sweetgall of CSIC headquarters, I was told that Steve Zelinsky was named as a first team offensive lineman. Tony Scudder was named as a first team linebacker. Steve Atamian as a first team defensive back and Pat Maxwell as a first team return specialist.

Second team selections included Pat Maxwell as a wide receiver and Bill Milks as an offensive lineman.

The Wildcats were also represented by six players on the honorable mention list. They are defensive lineman Ron Berrie, linebacker Ron Gilbert, linebacker Steve Dennis, receiver Jeff Ingram, quarterback Rick Lade and defensive back Jay Sandy.

A full article will be published in the sports section when further details are received in a press release.

prove even more this year. I believe they'll finish in the top half of the conference. Time will tell.

CSIC predictions announced at a conference meeting:

Men's Division: 1. Kearney State, 2. Washburn, 3 (tie) Missouri Western, 3 (tie) Missouri Southern, 5. Fort Hays State, 6. Emporia State, 7. Pittsburg State, 8. Wayne State.

Women's Division: 1. Pittsburg State, 2. Emporia State, 3. Missouri Southern, 4. Fort Hays State, 5. Kearney State, 6. Missouri Western, 7. Wayne State, 8. Washburn.

**MEN'S RECREATION BASKETBALL** will begin the week of the 24th according to Hank Overlin, Wayne Recreation director.

The A League (25 and under) will meet at 7 p.m. Monday, Nov. 24. The B League (30 and under) will meet at 7 p.m. Tuesday, Nov. 25. The C League (30 and over) will meet at 7 p.m. Wednesday, Nov. 26.

Hank will contact everyone who played last year and inform them when to come. Anyone who has not participated should come dressed to play at 7 p.m. Monday (Nov. 24).

shmallows at Martin when he speaks. (If you don't understand that, then you don't follow Billy Martin closely.)

**GO BIG RED!** All of my Iowa friends will really boo and hiss my column this week. I learned when I attended Wayne State College that most Iowans can't stand the Big Red. But that won't stop me from declaring Nebraska number one in my top 10 ratings this week.

Some people will argue that Georgia should be number one and others will claim that Florida State should own that spot because the Seminoles defeated Nebraska. However, I feel that Nebraska is better than both teams.

Anyone who believes in the latter argument should note that UCLA defeated Ohio State earlier in the year, yet the Buckeyes were ranked higher than the Bruins in last week's AP and UPI polls.

Northwestern continues to hold down the number one position in the bottom 10. Georgia Tech (bottom 10) and Notre Dame (top 10) both drop out of their respective ratings after battling to a tie.

I just hope that Nebraska does better on top of the pack than the former number one teams have done this year. The Huskers will have their hands full with Oklahoma in a couple of weeks.

- Randy's ratings:
- |                      |                        |
|----------------------|------------------------|
| <b>Top 10</b>        | <b>Bottom 10</b>       |
| 1. Nebraska (8-1)    | 1. Northwestern (0-9)  |
| 2. Florida St. (8-1) | 2. Oregon St. (0-8)    |
| 3. Georgia (9-0)     | 3. Memphis St. (0-9)   |
| 4. USC (7-0-1)       | 4. Vanderbilt (1-7)    |
| 5. Alabama (8-1)     | 5. UTEP (1-8)          |
| 6. Penn St. (8-1)    | 6. San Diego St. (1-7) |
| 7. Ohio St. (8-1)    | 7. Colorado (1-8)      |
| 8. Oklahoma (6-2)    | 8. TCU (1-8)           |
| 9. Pittsburg (8-1)   | 9. Air Force (1-7-1)   |
| 10. Baylor (8-1)     | 10. Wisconsin (2-7)    |

**PREDICTIONS FOR THE 1980-81** basketball season were made at a Central States Intercollegiate Conference meeting in Kansas this week.

Coaches in the CSIC predicted that Kearney State would win the men's conference race and Pittsburg would win the women's division. Wayne State was picked eighth in the men's race and seventh in the women's race.

The WSC men's team is (pardon the cliché) young and inexperienced. It would be nice to see a winning team but that can't be expected. I feel that Rick Weaver is going to build Wayne into a winning team in two or three years. This is a rebuilding year but the Wildcats should be fun to watch.

The Lady Wildcats on the other hand are pretty experienced under coach Helen Carroll. Wayne State improved considerably last year and I expect the Lady Cats to im-

**SOME GOOD NEWS** and some bad news for sports enthusiasts. The entertainment committee of the Wayne State College Student Senate was trying to sign Hank Aaron to a speaking appointment at WSC next semester. However, because of limited scheduling dates, he can't make it. That's the bad news.

Now, the good news. Because Aaron couldn't be signed to a contract, the committee looked elsewhere and found a controversial sports speaker. Billy Martin, manager of the Oakland Athletics, will be coming to Wayne State to lecture sometime second semester.

We'll have more information later. I hope that the audience doesn't throw mar-

## Final Wayne Volleyball Stats Released

The Wayne Blue Devils completed their volleyball season with a winning record of 10-9. They won 25 individual games and lost 18 while outscoring their opponents 534 to 461.

The Devils had 746 good serves for a serving efficiency percentage of 83 percent. Of the 746 good serves, 483 scored points and 160 were aces. Wayne had 1,930 good bumps for a percentage of 89 percent.

As a team, the Blue Devils had 621 good sets for 97 percent efficiency, 557 good spikes for 81 percent efficiency, 133 ace spikes, 153 dinks and tips and 44 blocks.

Spikes: Lisa Peters with 180 good spikes for 85 percent, Tami Murray with 137 good spikes for 76 percent, Lynn Surber with 98 good spikes and Sandy Utecht with 85 good spikes.

### CHAIN SAW REPAIR & SHARPENING

Sherry Bros. is the Wayne Area's Authorized Service Center for Chain Saws by:

- MUCULLOCH
- REMINGTON
- HOMELITE

Be Sure to Stop in Thursday at 8 p.m. for the \$1,000 Give-Away!

## SHERRY BROS.

FARM & HOME CENTER

116 West 1st, Wayne, NE 375-2682

**Serving individuals are:**  
Serving: Lisa Peters with 144 good serves for 95 percent, Jill Zeiss with 160 good serves for 87 percent, Lynn Surber with 158 serves for 84 percent and Sandy Utecht with 139 good serves for 86 percent.

**Serving points and aces:** Lynn Surber with 106 points and 38 aces, Jill Zeiss with 101 points and 41 aces, Lisa Peters with 86 points and 17 aces and Sandy Utecht with 84 points and 21 aces.

**Bumps:** Lisa Peters with 422 good bumps for 90 percent efficiency, Jill Zeiss with 390 good bumps for 90 percent, Lynn Surber with 385 good bumps for 91 percent.

**Sets:** Jill Zeiss with 449 good sets for 97 percent efficiency.

**Ace spikes:** Lisa Peters and Tammie Thomas with 49 ace spikes each.

**Dinks and tips:** Lisa Peters with 51, Lynn Surber with 37, Tammie Thomas with 26 and Jill Zeiss with 21.

**Blocks:** Lisa Peters with 20.

**Reserve Team**  
Wayne's reserves finished the year with a 4-5 record.

**Individual leaders were:**  
Serving: Pam Nissen with 76 good serves, Deb Prenger with 58, Mandy Peterson with 44, Tami Murray with 42, Kris Proett with 38 and Missy Stoltenberg with 37.

**Bumping:** Kris Proett with 197 good bumps, Missy Stoltenberg with 167, Tami Murray with 152, Deb Prenger with 149, Pam Nissen with 135 and Mandy Peter-

son with 101.

**Setting:** Tami Murray with 132 good sets and an efficiency percentage of 97, Kris Proett with 99 good sets and 92 percent efficiency.

**Spiking and tips:** Missy Stoltenberg with 84 for 85 percent efficiency, Mandy Peterson with 32 and Deb Prenger with 31.

**Freshman Team**  
Individual leaders on the freshman team:  
Serves: Christy Neisius with 53, Cheryl Sukup with 47, Karen Kaup with 38, Paula McCright with 32, Sarah Bliven with 29, Fran Gross with 21, Jenni Utecht with 21.

**Bumping:** Paula McCright with 75, Karen Kaup with 69, Fran Gross with 47, Sarah Bliven with 59, Cheryl Sukup with 58, Christy Neisius with 56, Jenni Utecht with 44.

**Spiking and tips:** Christy Neisius with 13, Cheryl Sukup with nine, Sarah Bliven with eight.

## Turn in Recreation Football Uniforms

Wayne Recreation football will come to a close, Saturday (Nov. 15). According to Recreation director Hank Overlin, 98 boys participated this fall.

The Recreation group worked on the T formation, I formation and shotgun formation and had intra-squad play for 2 1/2 months. Suits should be turned in from 4 to 5:30 p.m. Monday (Nov. 17) at the Wayne Middle Center (above the fire hall). Overlin said that if 90 percent of the uniforms are turned in by next Saturday, Recreation basketball will begin Monday, Nov. 24. The schedule will be printed in The Wayne Herald.

## CONGRATULATIONS

# \$25 WINNER

### Dennis Rickett Ponca

---

### \$5.00 WINNER

### Marvin Brummond Wayne

This week's contest was especially close with Dennis Rickett of Ponca earning the top prize with only three incorrect picks. His tie-breaker pick of Kearney State 28, Wayne State 10 netted him a \$25 gift certificate.

Marvin Brummond of Wayne and Mary Libbe of West Point were also tied with 17 correct picks in 20 games. Brummond claimed the second place gift certificate with a tie-breaker score of 24-14 in Kearney's favor edging out Mary Libbe's tie-breaker prediction of 21-17 Kearney.

These three individuals topped a long list of people with four misses each.

Congratulations to our two winners. They were awarded gift certificates redeemable at the following merchants who sponsor our contest:

Western Auto	Taco del Sol	Pierson Insurance Agency
Elden's Standard	Wayne Shoe Company	Bill's G.W.
Ve's Bakery	TP Lounge	Carhart Lumber Co.
Marra Home Improvement	Frederickson Oil Co.	T & C Electronics
Black Knight	First Savings Co.	The Museum Center
The 4th Jug	Grizzs Retail	Midwest Lunds
Ray's Bar		The Rusty Nail

# Sports

## THE BOWLING CORNER

WSC Tabbed 7th, 8th

## CSIC Preseason Picks

### LAUREL BOWLING

Wednesday Afternoon		Star Life	
Wally's Angels	10	Galilea	15
Wild Willy's Women	19	COOP	15
Daughterly Reality	18	Wilmers	13
Wagon Wheel	17	Crete	12
Corner Cafe	16	High scores: Brad Penlerick, 210, 507;	
Joe's Beauty Shop	14	Laurel Feed & Grain	17
Security Nat. Bank	13	Cardell, 57-9	20
Belden Insurance	12		
High scores: Sandy Moffatt, 208, 316; Cor-			
ner Cafe, 773; Security National, 2,218			
Converted splits: Jeanne Anderson, 457; Luet-			
le to Rassaacher, 57; Janelle Fiscus, 57			
Church League		Classic League	
Concord Two	23	Public Power	22
Concord Free	21	Logan Valley	22
Prasbyrton	19 1/2	5 & 5 Conspir	21
Logan Center	18 1/2	Ohio National	21
Concord One	18	Laurel Ready Mix	18
Immanuel Lutheran	17	Wilmers Trucking	17
Methodist	14	Laurel Oil & Fert	14
United Lutheran	13	Laurel Sales	9
High scores: Howard Hansen, 194; Verdel		High scores: Merlin Kint, 221	
Ertwin, 517; Presbyterian, 821; Concord Two,		James, 221; Bill Harrington, 557	
7310		Valley, 860; 7,475	

Wood, 237; Rob Mitchell, 203; Paul Teigren, 232; Rich Wurdinger, 207; 258; John Rebensdorf, 204, 210; Lee Tietgen, 202; Wayne Tietgen, 215; Lloyd Roebber, 201; Willis Lessman, 200; Val Klenest, 230, 278, 205; Russ Beckman, 213; Dick Carman, 211; Ron Milliken, 204; Frank Wood, 201; Swede Halley, 205, 234; George Jaeger, 200; Den Janke, 213; Duaine Jacobsen, 209; Ted Ellis 214, 211.

Men's 570 Series: Duaine Jacobsen, 579; Dick Carman, 571; Swede Halley, 610; Cliff Baker, 570; Rich Wurdinger, 653; John Rebensdorf, 591; Wayne Tietgen, 583; Willis Lessman, 599; Merlound Lessman, 586; Val Klenest, 713; Brad Jones, 584; Duaine Jacobsen, 588; Kim Baker, 624; Ken Spittgerber, 663; Dale Deck, 627; Larry Echtenkamp, 614; Ric Barner, 612; Ted Ellis, 595.

Women's 180 Games: Pat Morris, 204; Carol Lackas, 203; Sue Wood, 184, 202; Deb Bodenstedt, 199; Jude Milliken, 194; Tootie Lowe, 186, 193; Ione Roebber, 192; Linda Janke, 191; Wilma Allen, 183; Sheryl Doring, 183; Vicky Skokan, 181; Nancy Sherer, 180; Linda Janke, 202; Pat Miller, 189; Wilma Allen, 193; Marion Evans, 180; Dorothy Hughes, 202; Judy Sorenson, 217; Kyle Rose, 191; Bernice Peterson, 188; Jo Ostrander, 193; Lois Netherda, 211; Helen Weible, 193; Sue Reeg, 204; Esther Hansen, 184; Judy Williams, 196; Patty Deck, 187; Judi Topp, 191; Jean Schultz, 181; Tootie Lowe, 192; Sue Wood, 202, 237; Jo Ostrander, 183; Mickey Halley, 218; Marilyn Gehner, 195; Linda Janke, 189, 187; Marcia Pankaskie, 190.

Women's 480 Series: Tootie Lowe, 546; Sue Wood, 611; Jo Ostrander, 526; Judi Topp, 539; Karen Hansen, 500; Linda Janke, 507; Wilma Allen, 492; Marlon Evans, 508; Gerl Marks, 491; Dorothy Hughes, 481; Judy Sorenson, 512; Jo Ostrander, 498; Lois Netherda, 517; Helen Weible, 501; Tootie Lowe, 537; Ione Roebber, 536; Linda Janke, 532; Deb Bodenstedt, 532; Alice Rohde, 527; Pat Morris, 526; Sue Wood, 520; Adie Jorgensen, 516; Vicky Skokan, 500; Diane Wurdinger, 494; Carol Lackas, 492; Marilyn Gehner, 534; Linda Janke, 551; Cleo Ellis, 481; Marcia Pankaskie, 497; Alice Rohde picked up the 4-7-10 split; Peg Lut picked up the 5-7-9 split

The basketball season is soon to begin for the Wayne State College men's and women's teams. As in years past, the Central States Intercollegiate Conference held a press conference as a tip-off for the winter sports season.

At the conference meeting, held Monday in Topeka, Kan., the conference predictions voted on by the coaches were released for the upcoming season. Teamwise, the two new coaches in the men's division were both ranked at the bottom, those being Pittsburg State under John Hickman and the Wayne State Wildcats under head coach Rick Weaver.

Weaver was satisfied with the position the Wildcats were given in the conference considering the talent that is returning to the lineup in the form of one returning starter and only six lettermen. Last season the Wildcats ended the season in the sixth place slot with a 5-9 record in the CSIC and an 8-17 record overall. The predictions for the women's division of CSIC were also released

ed at the press conference. The Lady Wildcats were rated in the seventh position for the upcoming season, a spot that head coach Helen Carroll was not totally satisfied with. Last season the Lady Wildcats were involved in a three-way tie for sixth with Kearney State and Washburn

with 5-9 CSIC records in a very tight conference division in which only one team, Missouri Western, had a clean hold on any position. The Wildcats open the 1980-81 basketball season with the NAIA pre-season classic to be held at Kearney State Nov. 20, 21 and 22. The Wayne State Holiday

Journey is Dec. 29 and 30. The first home game for the Wildcats will be Jan. 9 against conference rival Missouri Western. The Lady Wildcats open their 1980-81 season with a home game against Peru State. The match up will be Nov. 25 and will be played in Rice Auditorium.



### WSC Defeats Alumni

LEON McRAE scores two points for Wayne State's varsity as teammate Mike Webb and alumni player Bill Kruse watch. Wayne State handily defeated the WSC alumni in an exhibition game, Saturday night in Rice Auditorium.

# Kuhn's PRE-THANKSGIVING SALE

**Alaskan FLANNEL SHIRTS**

- Lasting shape retention
- Superior shrinkage control
- Full tails
- 2 pockets.

The great shirt for all outdoors.

S-M-L-XL  
Reg. 16.95

**3 Day Special**

**\$12.90**

Be Sure To Stop in Thursday at 8 p.m. for the \$1,000 Give-Away

**Blue Devil GYM BAGS**

Just in time for indoor sports. Big 20 inch roll canvas bag. White strap handle. Reg. 7.29. Royal blue white, trim and lettering. Wayne Blue Devils.

**3 Day Sale**

**\$4.90**

**Mr. Leggs Quilt Lined WESTERN FLANNEL SHIRT**

Dacron-filled with poly-cotton shell. 2 snap cuff with 2 snap front pockets.

Reg. Size **\$24.00**

Tall Man **\$25.00**

Sizes S-M-L-XL and Tall Man in M-L

**Walls Blizzard Proof INSULATED COVERALLS**

Foam insulated for cold winter weather. Biswing back, 2 zippered breast pockets, snap closure on legs. The cadillac of coveralls. Olive green color. Fully washable. Reg. \$42.99

**Special \$37.90**

Regulars M-L-XL  
Tall Man Sizes M-L-XL  
Hoods to Match **\$6.99**

**HAGGAR Haggard SUIT**

100% Polyester (Dacron). Magic stretch. Coat size 36 to 46. Navy and camel.

Coat. Reg. 60.00.

**Special \$48.00**

Pant. Reg. 24.00.

**Special \$19.95**

A 3 Day outstanding value.

**Grey Jogging SWEAT PANTS**

Draw string waist. 93% Cotton, 7% Nylon. Elastic band on bottoms.

Special **\$5.90** Pair

**Maverick DENIM SHERPA LINED VEST**

The popular Maverick Automatics, Sanforset, Sherpa 100% Polyester.

Reg. \$19.99.

Sizes M-L-XL.

**\$14.90**

**Laredo WESTERN BOOTS**

Heavy duty Ranch Wellington with pull holes. Amber full grain cowhide foot and top. Dagger heel. Size: 8-12 D widths.

**\$49.97**

**Mens - Boys CREW NECK SWEATSHIRTS**

Fleece lined orlon-cotton blends. Boys S-M-L, Mens S-M-L-XL. Reg. to 5.99. Assorted colors and grey.

**\$4.97**

**DO YOU KNOW?**

... that the man who hit more home runs than any other is Japanese slugger Sadahara Oh of the Yomiuri Giants? He hit his 820th homer in Tokyo on July 7, 1979?

... that the longest home run ever measured was one of 618 feet by Dizzy Carlyle in a minor league game in 1929?

... that the fastest pitcher in the world is L. Nolan Ryan of the California Angels who was electronically clocked at a speed of 100.9 miles an hour on August 20, 1974?

READ AND USE WAYNE HERALD WANT ADS

**FOOD VALUES**

Prices Effective 11/13 thru 11/15

<b>GROUND BEEF</b> 2 LB FROZEN <b>\$1.09</b> LB	<b>FRESH - FROZEN WHOLE CATFISH</b> <b>\$1.59</b> LB
<b>MORRELL BIG BOLOGNA</b> <b>79¢</b> LB	<b>OCEAN PERCH</b> 5 LB BOX <b>\$6.45</b>
<b>HOME RENDERED LARD</b> <b>59¢</b> LB	<b>MORRELL BRAUNSCHWEIGER</b> <b>59¢</b> LB

HOURS: Monday-Friday - 8 a.m. to 6 p.m.  
Saturday - 8 a.m. to 3 p.m.

**JOHNSON'S FROZEN FOODS**

Phone 375-1100 Wayne 116 West Third

**HEARING AID SERVICE CENTER**

Jack Jennings Professional Building 10:00-12:00

**Beltone** WHEN A HEARING AID WILL HELP

Friday, November 13 BELTONE HEARING AID SERVICE 921 12th Street Sioux City, Iowa Phone 712-351-1944

# WAKEFIELD NEWS / Mrs. Hale 287-2728

## Homemakers Tour Wakefield Fire Hall

Eight members of the Happy Homemakers Home Extension Club met Nov. 5 at the Wakefield fire hall.

Rescue unit captain Arthur Barker showed club members the Jaws of Life, rescue trucks, and other equipment.

Following the business meeting, members returned to the home of Mrs. Lowell Newton for a business meeting. Roll call was "Your Favorite Thanksgiving Food." Health leader Mrs. Francis Muller reported on upcoming meetings.

Next meeting will be a Christmas party in the home of Mrs. Derwood Wriedt on Dec. 3 at 2 p.m. There will be a gift exchange.

### Going to Stanton

The Allen Keagle VFW Auxiliary will not meet next Tuesday as originally announced.

Members are planning to go to Stanton that day to meet with the national president. There will be an 11:30 a.m. salad luncheon. Each member of the Wakefield auxiliary is asked to furnish a salad.

### Ladies Aid

Thirty members of St. John's Lutheran Ladies Aid and three guests met Friday afternoon.

Mrs. Elton Miller gave the Thanksgiving devotions, entitled "Thank You God." The Rev. Ronald Holling led the topic discussion, entitled "The Woman Who Touched His Cloak."

The Friendship committee reported sending sympathy cards to the Walden Kreamers, Mrs. Freda Wickman, Mrs. Irene Blatert and Mary Alice Utecht. Baby cards went to the Dan Browns, and the Gayle Lundahls, and an anniversary card was mailed to the Rev. and Mrs. Albrecht. Get well cards were sent to Arnold Brudigan, George Eickhoff, Mildred Lundahl and Freda Wickman.

It was reported that 16 quilts and seven boxes of clothing were packed for Lutheran World Relief.

Mrs. Harold Holm and Mrs. Cecil Fredrickson attended Seminar '80 at Norfolk recently. Mrs. Holm reported on activities during the two day meeting.

Mrs. Fredrickson read a poem, "The Masters." Mrs. Marvin Stolle reported on Rally Day held at St. Paul's Lutheran Church.

Mrs. Stolle presented a gift and silk flower corsage to Mrs. Esther Dersch in honor of her 80th birthday.

The meeting closed with the Lord's Prayer and the table prayer. Mrs. Willard Bartels and Mrs. Erwin Bartels served lunch.

Next meeting will be a 12:30 p.m. Christmas luncheon on Dec. 5.

### FHA Convention

About 24 members of the Wakefield chapter of the Future Homemakers of America (FHA) attended a district convention in West Point last month. Theme

was "Reach Out and Touch Someone."

The Wakefield chapter held devotions for the day. Ms. Zielke gave the national convention report and Susie Baker, District V State Officer, questioned the 1980-81 state officer candidates.

Wakefield also was in charge of finding a speaker. They chose Anita Gaumnitz, a social worker from Sioux City, who spoke on child abuse.

Kella Lund of Wakefield received second place in the creed speaking contest.

The Wakefield FHA also took part in the annual hospital bazaar in Wakefield recently. They collected about \$48 from their cake walk. The money will go to the hospital.

### Haunted House

Over 500 youngsters and adults toured the Haunted House in Wakefield Oct. 30-31, sponsored by The Daughters of the Prairie.

Proceeds from the event will be used for the Miss Centennial contest and other activities sponsored by the group during Wakefield's Centennial celebration next year.

### 85th Birthday

The Randell Larsons, Michael, Brian and Cathi, entertained Sunday for the 85th birthday of their grandfather, Alvin Fredrickson of Allen.

Attending were Mr. and Mrs. Fredrickson, Mrs. Orville Larson of Wakefield, the Keith Fredricksons, Jon Paul and Kelly of Omaha, the Robert Fredricksons of Sioux City, the David Fredricksons and Penny Ron Larson, the Ramon Larsons, Jessica and RaeAnne and Kevin Fredricksons of Wakefield.

### Pancake Day

A larger than usual crowd attended Pancake Day Nov. 4, according to co-chairmen Lefty Olson and Don Kuhl.

School cooks used 175 pounds of flour, two cases of eggs, seven cases of syrup, 175 pounds of sausage, 30 gallons of milk and 100 pounds of butter.

The event sponsored by the Wakefield Community Club, was held in the school multi purpose room.

### Circles Meet

Eleven members of Circle 1 of the Salem Lutheran Church met with Mrs. Marvin Mortensen last Thursday afternoon. Mrs. Alden Johnson gave the lesson.

Circle 2 met with 11 members last Thursday afternoon. Hostess was Mrs. Sam Utecht. Eveline Ring gave the lesson.

Mrs. Gust Hanson hosted Circle 3 last Thursday afternoon with 10 members attending. The lesson was given by Mrs. Jack Kruger.

Mrs. Robert Johnson was a guest and gave the lesson at Circle 4. Eleven members attended the meeting last Thursday morning with Mrs. Ron Harding.

Circle 4 met with Mrs. Merle Schwarzen on Nov. 4 at 8 p.m.

Mrs. Terry Baker gave the lesson.

Lutheran women will hold their Christmas luncheon on Dec. 4 at 12:30 p.m.

### Presbyterian Women

About 20 members of United Presbyterian Women met Nov. 6 at 2 p.m. Margaret Patterson gave the program on Thanksgiving, and an offering was taken for missions.

Plans were discussed for a style show during next year's Centennial celebration. Persons with old clothes to donate are asked to contact Eva Conner.

There will be an officers meeting on Nov. 19 at 1:30 p.m. at the church to plan programs for the next year.

Mrs. Ed Schnasse and Edyth Bressler served lunch.

Next meeting will be a Christmas luncheon on Dec. 4 at 12:30 p.m. Emerson United Presbyterian Women will be guests, and there will be installation of officers.

tion of officers.

### Christian Church

(Greg Hater, pastor)  
Thursday: Emerson-Pender-Thurston Bible study, 8 p.m.  
Sunday: Bible school, 9:30 a.m.; worship, 10:30; youth and choir, 7 p.m.; worship, 8.  
Wednesday: Wayne-Wakefield Bible study, 8 p.m.; Allen Bible study, 8:30 and under Bible study, 8.

### Evangelical Covenant Church

(E. Neil Peterson, pastor)  
Friday: Conference board meeting, 11 a.m.; Friendship Club, 7:30 p.m.  
Sunday: Sunday school, 9:45 a.m.; worship, 11; Senior Hi-League, 5 p.m.; Junior Hi-League, 7:30; missionary service, 7:30.  
Monday: Wakefield Ministerium, 10 a.m.  
Wednesday: Confirmation, 4 p.m.; Bible study and choir, 7:30

### Immanuel Lutheran Church

(Michael L. Teuscher, vicar)  
Sunday: Sunday school and youth Bible class, 9 a.m.; worship with holy communion, 10.  
Monday: Wakefield Ministerium, 10 a.m.  
Tuesday: Ladies Aid visiting Wakefield Health Care Center, 2:30 p.m.; adult Bible class, 7:30.  
Wednesday: Confirmation class, 4:30 p.m.

### St. John's Lutheran Church

(Ronald E. Holling, pastor)  
Friday: Ruth Bible study, Mrs. Kenneth Baker, 2 p.m.  
Sunday: Sunday school, 9:15 a.m.; worship, 10:30; Crossways, 8 p.m.  
Monday: Wakefield Ministerium, 10 a.m.; choir, 8 p.m.  
Tuesday: SCF, 2 p.m.; LLL, 8 p.m.  
Wednesday: Weekday classes, 4 p.m.

### Salem Lutheran Church

(Robert V. Johnson, pastor)  
Sunday: Sunday school, 9 a.m.; worship, 10:30.  
Monday: Wakefield Ministerium, 10 a.m.  
Wednesday: Confirmation, 4 p.m.; choir, 8 p.m.

### United Presbyterian Church

(Dana White, pastor)  
Thursday: Ruth Circle, Margaret Patterson, 2 p.m.; Mary Circle, Mrs. Preston Turner, 2 p.m.  
Sunday: Sunday school, 9:45 a.m.; worship, 11.

### Social Calendar

Thursday, Nov. 13: Pleasant Dell Club, Mrs. Clifford Fredrickson, 2 p.m.  
Wednesday, Nov. 19: Variety Club, Esther Turney, 1:30 p.m.

### School Calendar

Thursday, Nov. 13: Junior high wrestling, Osmond at Wakefield, FBLA, 7 p.m.  
Friday, Nov. 14: Eighth grade party, alcoholism assembly for grades 6-12, 9:45 to 11:15 a.m.  
Saturday, Nov. 15: Junior high wrestling at Howells.  
Tuesday, Nov. 18: FBLA field trip.



## Wellman's IGA Open

WELLMAN'S IGA is beginning to make the transition from WHITIG's IGA. Bob Wellman, a native of Aberdeen, S. D., assumed ownership of the IGA store this week. He has had 35 years' experience in the grocery business, having managed a Red Owl store for 25 years. He came here from St. Peter, Minn. While the layout of the store is expected to change, no major alterations are planned. An Army veteran, Wellman and his wife, Gladys, have three children: daughters Robin, 25, and Susan, 23; and a son, Perry, 18. Perry will help manage the store, and the rest of the family will move to Wayne when suitable housing is found. New store hours in effect are from 8 a.m. to 9 p.m. Monday through Saturday, and from 10 a.m. to 6 p.m. on Sundays. A grand opening is planned after the first of the year. Wellman is pictured with his son.

## Domestic Violence Help Available

Hotline Numbers Open 24 Hours

Domestic violence is a degrading, demoralizing, destructive social force affecting not only victims, but also every member of the family according to Hallie Sherry, coordinator for Haven House in Wayne.

No race, no creed, no area, no economic status, no profession is without victims. Wife abuse is the most common unreported crime in America today, she said.

Sherry defines wife abuse, or domestic violence, as the physical mistreatment of a woman by her husband, ex-husband or male companion. Murray Straus, one of the nation's foremost researchers in the field of domestic violence, estimates that 28 million women are repeatedly abused, and many of these victims suffer serious physical harm.

The coordinator points out that society suffers from "battered wives syndrome." Research now proves violent families are breeding grounds for such problems as juvenile delinquents, alcoholism and drug abuse. Often wife abusers are likely to abuse their children.

No measurement can assess the emotional and psychological damage inflicted

on children where domestic violence exists. It is known that abusers frequently become violent parents, perpetuating the process. Domestic violence hurts socially.

Haven House is a non-profit organization created to respond to the problem of women whose bodies and lives are battered physically and emotionally. If you are abused and would like to talk to someone, or if you know someone who has been abused, Haven House offers the following confidential services:

Twenty-four hour Hot Line, 1-800-672-8323 or Haven House, 375 4633 from 9-5 Monday through Friday.

Transportation in crisis situations, transportation by law enforcement officials is recommended for safety.

Access to medical services or first aid.

Access to emergency legal counseling and referral.

Crisis counseling to provide support, and 72 hours of shelter.

Domestic violence projects have been funded throughout the state to provide emergency services. If you live in a locality that is not near a Domestic Violence project call your nearest county welfare office.

**FINAL 3 DAYS of Our HOLIDAY PREVIEW SALE**

**STOP — SHOP — SAVE**

**SAV-MOR DRUG**

THE LOFT Walgreen AGENCY

1022 MA N 1-111-375-944

Stop in Thursday at 8 p.m. for the \$1,000 Give-Away

Hwy 35 East Wayne, Nebr.

M-F — 9:00-9:00  
Sat. — 9:00-6:00  
Sun. — 12:00-5:00

# PAMIDA

## YELLOW TAG-SALE

# 25% OFF

WITH COUPON BELOW

OUR ENTIRE STOCK OF YELLOW TAG ITEMS.

**NOW THROUGH SUNDAY NOVEMBER 16**

EVERY DEPT., THOUSANDS OF ITEMS—COME OUT NOW & LOOK FOR THE YELLOW TAGS. EVERY YELLOW TAG MEANS BONUS CASH SAVINGS FOR YOU!

- \* HOUSEWARES
- \* FASHIONS
- \* AUTOMOTIVE
- \* SPORTING GOODS
- \* SCHOOL CLOTHES
- \* SHOES
- \* HOME FURNISHINGS

THIS COUPON ENTITLES YOU TO... **25% OFF** ALL YELLOW TAGGED MERCHANDISE

COUPON GOOD NOW THRU SUNDAY, NOVEMBER 16, 1980

FOR STORE USE ONLY—CANNOT BE COMBINED WITH OTHER DISCOUNTS

**KTCN** 1590 AM 105 FM

**MAJOR NEWS ROUNDUP**

7 a.m.-8 a.m.  
12 noon-5 p.m.  
Today's News TODAY

## WHY TAKE

**\$40 - \$50 - \$60**

... CASH for your CLASS RING, when The Diamond Center is giving ...

**\$100** Trade-In for any Men's 10k CLASS RING

**\$40** Trade-In for any Women's 10k CLASS RING

Do your Christmas shopping now at The Diamond Center, without spending your hard earned CASH.

Don't forget, you Bonus Bucks winners can spend your Bonus Bucks at The Diamond Center, too!

# The DIAMOND CENTER

375-1804 Wayne, NE. 211 Main



# Club Sponsoring Craft Sale At Allen

The Elf Home Extension Club is once again sponsoring a craft sale at the Senior Citizens Center in Allen. All proceeds will go to the center.

The craft sale will be held Thursday and Friday, Nov. 20 and 21, from 9 a.m. to 4 p.m. each day.

Persons with handmade items they would like to sell at the craft sale are asked to bring them to the Senior Citizens Center by Wednesday, Nov. 19. All senior citizens are asked to donate something.

There also will be a bake sale during the day and a drawing for a quilt made by the senior citizens.

### Planning Breakfast

All senior citizens of the Allen area are invited to attend a breakfast at the Senior Citizens Center on Monday, Nov. 17, at 8 p.m. The breakfast will be served by the Farmer's Cafe.

Persons planning to attend are asked to make their reservations with Joanne Rahn at the Senior Citizens Center. Following the breakfast, a hearing aid consul-

tant will be on hand to explain hearing aids.

Mrs. Rahn said there will be no potluck dinner this month.

### Spook Party

The Pitch Club held a belated spook party Sunday evening following supper in the Kendal Roberts home, Ponca.

Receiving pitch prizes were Shirley Lanser and Gaylen Jackson, high, and Duane Koester and Lois Stapleton, low.

### Retired Teachers

The South Sioux City Area Retired Teachers Association will meet Monday, Nov. 17, at 1 p.m. at the Paddock in South Sioux City for a luncheon.

Following the business meeting, there will be a program in the Robert Flass home. Each member is asked to bring a guest.

### Attend Tour

Mrs. Marie Von Minden left Friday for the Dollar Day Tour sponsored by the American Legion Auxiliary.

She and department vice president Millie Wagenknecht and

department legion commander Ed Falr traveled to the Veteran's Home in Scottsbluff, the VA Medical Center and Veteran's Home, both in Grand Island, the VA Medical Center in Lincoln, the VA Medical Center, and Veteran's Home, both in Omaha.

Lorraine Schacht of Neligh traveled part of the way with them and returned to Emerson with Mrs. Von Minden on Nov. 11 to attend the Dixon County American Legion and Auxiliary Convention.

On Nov. 12, they attended Dollar Day at the Veteran's Home in Norfolk. They were accompanied by Marie Von Minden.

During Dollar Day, each veteran residing in a Veteran's Home or Medical Center is presented a dollar from the American Legion Auxiliary as a small token of appreciation for their sacrifices to the country.

### Potluck Lunch

The Eastview Cemetery Association met Friday noon for a potluck lunch in the home of Sylvia Whitford. Mabel Mitchell became a new member.

Bingo furnished the afternoon's entertainment.

There will be no meeting in December. Next meeting will be Jan. 2.

### Elf Club Meets

The Elf Home Extension Club met Friday in the home of Evelyn Trube with seven members and one new member, Fran Schubert.

During the business meeting, plans were made for a craft sale which the club is sponsoring at the Allen Senior Citizens Center on Nov. 20 and 21 from 9 a.m. to 4 p.m. each day.

Plans also were made for a potluck Christmas party on Dec. 5 at 12:30 p.m. in the home of Jackie Williams. Members are to bring cookies and candles to exchange.

Carol Jackson and Marlys Malcom presented the lesson at the November meeting, entitled "Dressing for Your Life Style."

### Several Calls

The Allen Waterbury rescue unit and fire department were called several times during the past week.

Last Monday they were called to the school to take Bruce Malcom to the Wakefield Community Hospital. Malcom suffered a broken bone in his foot.

On Friday evening, they were called to a two-car accident on Highway 20 about one half mile west of Noe's Station. No one was

injured.

Saturday evening a grass fire was reported at the Jim Warner farm and threatened some out-buildings and gas barrels. The blaze was brought under control and no damage was reported.

### Achievement Night

The Lucky Lads and Lassies 4-H Club held its Achievement Night meeting last Thursday at the Methodist Church in Allen.

Members and their families enjoyed a potluck supper, followed with a report of the club's past year by Robb Linafelter. Club leader Donna Wood thanked everyone for their help during the year.

Awards and fair money were handed out to the members by Mrs. Wood, Mary Jean Jones and Norma Warner.

### 90th Birthday

An open house reception was held last Wednesday afternoon in the home of Edna Anderson in honor of her 90th birthday.

The event was hosted by her daughter, Helen Ellis, and her son and wife, the Wilmer Andersons.

Many friends and relatives called during the afternoon to extend birthday wishes.

### First Lutheran Church

(David Newman, pastor)  
Sunday: Worship, 9 a.m.; Sunday school, 10; youth spaghetti supper, 6 to 8:30 p.m.  
Tuesday: Lydia Circle, 7:30 p.m.

### Springbank Friends Church

(Galan Burnett, pastor)  
Sunday: Sunday school, 10 a.m.; worship, 11.  
Wednesday: Midweek prayer meeting, 8 p.m.

### United Methodist Church

(Vivian Hand, pastor)  
Sunday: Sunday school, 9:15 a.m.; worship, 10:30; District UMYF Rally at South Sioux City, 3 to 6:30 p.m.; congregational potluck dinner, 6 p.m.; UMYF, 7:30; study group for Advent, 7:30.  
Tuesday: Joy Circle, Dorothy Ellis, 7:30 p.m.  
Wednesday: All church choir rehearsal, 6:30 p.m.

### Community Calendar

Thursday, Nov. 13: Sandhill Club, Alice Krause, 2 p.m.; Bid and Bye Club, Eleanor Ellis, 2 p.m.  
Friday, Nov. 14: Allen Community Extension Club, Joyce Schroeder, 2 p.m.  
Monday, Nov. 17: Allen Community Development Club, 7:30 p.m.  
Tuesday, Nov. 18: Dixon County Historical Society, 7:30 p.m.  
Thursday, Nov. 20: Craft Sale at Allen Senior Citizens Center, TNT Home Extension Club, Allen fire hall, 7:30 p.m.; VFW, Martinsburg fire hall, 8 p.m.; VFW Auxiliary, Martinsburg school, 8 p.m.

### School Calendar

Thursday, Nov. 13: Drama assembly, 8:30 a.m.  
Monday, Nov. 17: Voting for County Government Day; FHA skating party, South Sioux City.

Marlys Malcom, Connie Lindahl, Doris Linafelter, Eleanor Jones and Mary Lou Koester attended a UMW workshop at the United Methodist Church in Pender last Thursday afternoon.

About 40 relatives and friends gathered in the Marie Von Minden home on election night to watch the results. Von Minden was elected State Senator.

The Scott Von Mindens and Lori Von Minden, Lincoln, were weekend guests in the Marie Von Minden home. Scott and Lori remained until Wednesday morning.

The Doug Falsoms, Prescott, Ariz., have sub-leased the home of Mr. and Mrs. K. R. Mitchell for the winter. Mitchells left last Thursday for their winter quarters in Brownsville, Texas.



## Test Gives Wiring Demo

LARRY TEST of Wayne gives a wiring demonstration for the Wayne-Carroll High School building construction class. The class, instructed by Mike Mallette, was working in the upstairs of an area home, dividing a large room into two bedrooms, a hallway and a closet. The group framed the walls, is doing electrical wiring, plans to sheetrock, build a bi-fold closet door, build two doorways and hang doors.

Michelle and Adam Tacey, Osmond, spent last Wednesday to Friday in the home of the Leonard Thompson home at Newman Grove recently for supper honoring the host's birthday.

## WINSIDE NEWS / Mrs. Andrew Mann 286-4461

# Guests Attend Bridge Club

Three Four Bridge Club met Friday in the home of Mrs. Robert Koll with three guests, Mrs. F. C. Witt, Mrs. Gary Kant and Mrs. Stanley Soden.

Prizes were won by Mrs. Carl Troutman, Mrs. Frank Weible and Mrs. F. C. Witt.

Next meeting will be Nov. 21 with Mrs. Carl Troutman.

Rohlf, Don Matthes and Wilmer Deck. A cooperative lunch was served.

United Methodist Church (Shirley Carpenter, pastor)  
Sunday: Sunday school, 10 a.m.; worship, 11.

Trinity Lutheran Church (Lon DuBois, pastor)  
Sunday: Sunday school, 9:30 a.m.; worship, 10:30.  
Tuesday: Believe and Share, A through K, 7:30 p.m.  
Wednesday: Mothers Circle; confirmation class, 5:30 p.m.; Believe and Share, L through R, 7:30 p.m.

St. Paul's Lutheran Church (John E. Hafermann, pastor)  
Thursday: Womens Bible study, 1:30 p.m.  
Sunday: Sunday school and Bible classes, 9:30 a.m.; worship, 10:30.

Social Calendar  
Thursday, Nov. 13: Neighboring Circle, Mrs. Eldon Herbolzheimer.  
Friday, Nov. 14: GT Pinochle Club, Mrs. Gothilf Jaeger.  
Sunday, Nov. 16: Card Club, Dean Jankes.  
Tuesday, Nov. 18: Senior Citizens, Stop Inn; Modern Mrs. Mrs. Warren Jacobsen; Jolly Couples, Lloyd Behmers; Tuesday Pitch Club, Cliff Burrrises.  
Wednesday, Nov. 19: Busy Bee Club, Mrs. Charlotte Wylie; Friendly Wednesday Club, Mrs. Ivan Diedrichsen; Scattered Neighbors, Mrs. Dale Krueger.

School Calendar  
Friday, Nov. 14: Football state playoff finals.  
Monday, Nov. 17: All-school play matinee, 1:30 p.m.  
Tuesday, Nov. 18: All-school play, multi-purpose room, 8 p.m.  
Thursday-Friday, Nov. 20-21: State Convention, School Board and Administrators, Lincoln.

The Ben Kurrelmeyers and Lyle, Fremont, and Alice Diedrichsen, Scribner, were Sunday dinner guests in the Ivan Diedrichsen home.  
The Ingvald Baks, Yankton, S. D., were dinner guests recently in the Glenn Olson home.

Michelle and Adam Tacey, Osmond, spent last Wednesday to Friday in the home of the Leonard Thompson home at Newman Grove recently for supper honoring the host's birthday.

The Mervin Hamm family, Pender, were weekend guests in the Walter Hamm home.

Mrs. Bill Taylor and Mrs. Ida Morris, Minnatare, visited last

Wednesday to Saturday in the home of Mrs. Etta Jackson. They also visited their sister, Mrs. Nina Mellick, in a Norfolk hospital.

Guests in the Adolph Meyer home over the weekend were Mrs. Leo Brandt, the Bobbe Meyers and Jason, all of New Haven, Mo., the Allen Meyers, Berger, Mo., and Elaine Meyer, Omaha. They came for the wedding of June Meyer and Gene Topp.

The John Ritzes, Luverne, Minn., were weekend guests of Mrs. Dora Ritz.

Mrs. Dora Ritzte, the John Ritzes, Luverne, Minn., and Mrs. Esther Svenson, Stanton, attended funeral services for Otto Schumacher at Osmond Saturday.

**PSSSST!**  
**FREE**  
Wayne Herald  
**WANT AD**

When You Purchase \$10.00 of Groceries From the Following:

- Bill's GW
- Johnson's Frozen Foods
- Rich's Super Foods
- Wellman's IGA

Just Ask For a Form at the Checkout Counter.

**Wayne Herald Ph. 375-2600**

Make us your headquarters for Vinyl Floor Covering!

Be Sure To Stop In Thursday at 8 p.m. for the \$1,000 Olive-Away

Many different patterns to choose from!

**KING'S CARPETS**

104 Main Wayne, NE 375-2890

if filling those stockings is a budget strain...  
**Join the club**

Other people just like you have solved the dilemma of paying those after-Christmas bills. They opened a Midwest Federal Christmas Club Account. And, when Christmas shopping time rolls around, they receive a check for the amount they've saved — and interest too!

Stop in today and just say you want to join the club. Tell us how much you want to deposit each month. It'll make shopping fun again.

Make it even easier — use our transmatic service and your deposit will be automatically transferred from your checking account.

Sign up now and get this beautiful plate FREE!

**MF Midwest Federal SAVINGS AND LOAN**  
4th and Main  
Wayne

**FSLIC**

**Follow the flock to the best car deals in town.**

Finding the car dealer with the best prices isn't hard. Just follow the flock and see who's selling the most cars. We'll be looking for you.

**Arnie's FORD-MERCURY**

219 1st St. Wayne, Nebraska Phone 375-3798

**ROBERT BRUCE**

Ahead of the field. The Arnold Palmer Classic Cardigan by Robert Bruce.

Arnie was never smoother than he is in this classic links stitch cardigan from Robert Bruce. Made from 100% Orlon<sup>®</sup> acrylic. The look of a pacesetter. Sizes S-M-L-XL. \$28.50

Be Sure To Stop In Thursday at 8 p.m. for the \$1,000 Olive-Away

**SURBER'S SURBER'S**  
202 MAIN STREET

© DuPont registered trademark

# Wayne State Has New Counselor

Wayne State College has a new counselor this year, Donna Bliss. It is her job to counsel students who have problems and need help. Before coming to WSC, Bliss was the director of the Counseling Career Service at Maryville State College in North Dakota. Bliss graduated from the University of North Dakota where she received her degree in counseling and guidance. Bliss has taught high school English and psychology and was also a junior high counselor. Bliss said it was when she taught high school that she decided to become a counselor, when students began coming to her outside of class with their problems. Donna Bliss She said the job at WSC is

always what she has wanted and said she likes the academic setting. She enjoys her job here and finds the students wonderful to work with. Students will come to her about their friend's problems and ask what can be done, which Bliss finds is a unique situation. Some common problems of students that Bliss mentioned were career choices, depression, family problems, loneliness and relationships. In her spare time Bliss said she enjoys horseback riding, swimming, playing the piano, meditating and traveling. She was raised on a farm in North Dakota and has a great reverence for nature. With the help of a committee of 12, Bliss is currently organizing a Human Relations group. Accord-

ing to the counselor, the purpose of this group is to research the needs of students in the area of counseling and to respond to those needs in a way acceptable to the study body. The group is interested in pursuing issues related to human relations and health. The organization will receive some funds from the WSC Student Senate, and about 100 students have expressed interest in the group. Three meetings have been held so far. Through a questionnaire distributed among the ones interested in the group, it was discovered that students are interested in such topics as death and dying, depression and sexual relations. The Human Relations group will work to bring speakers

on these subjects to WSC. On a smaller scale, personal growth groups provide opportunities for members to grow to know and appreciate one another on more personal levels, to assess more fully their own human relations skills, and to value more fully their own worth as human beings, according to Bliss. One such group has 13 members and should begin its meetings within the next two weeks.

**Feeders' Meeting Nov. 24**

Northeast Feeders Association will hold its fall "feeders only" membership meeting on Nov. 24 at the Black Knight in Wayne. Social hour will begin at 6:30 p.m. with dinner at 7:30. The fall meeting "kicks off" the 1981 membership year in which the Northeast Feeders ranked second in the state in membership. Membership in the local association is the beginning of a strong voice at the state and national level, states Art Greve president. The after dinner speaker will be Gary Bredenstener, farmer management specialist from southeast Nebraska. He will talk on "Things to Do at the End of the Year." This talk centers on farm taxes and methods a feeder can use to take full advantage of tax laws. All members and prospective members are invited to attend and join the Feeders Association for 1981.

### FREE INSULATION SURVEY

Let us check your house for adequate insulation. With high fuel costs, proper insulation is economical. **SAVE ON FUEL SAVE ON TAXES**

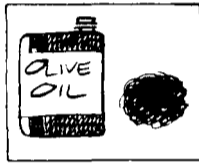
**Fire Safety**  
For fire safety, blown rock wool insulation is unmatched. It is made of inorganic mineral fibers that will not burn and will not even melt at temperatures under 1800°F.



12 inches of rock wool is recommended in this area.

**MARRA HOME IMPROVEMENT CO., INC.**  
P.O. Box 110 Wayne, Nebraska 68787  
Please Contact Us For a Free Insulation Survey

Name \_\_\_\_\_  
Address \_\_\_\_\_  
Phone No. \_\_\_\_\_



Bad spots can sometimes be removed from pewter by rubbing them with grade 00 steelwool dipped in olive oil.

## FAMOUS

**SHARP CAROUSEL™**

### Microwave Ovens are Now Available at ...

**Peoples Natural Gas Company**



The SHARP CAROUSEL ovens cook circles around all other brands of microwaves. Come in... We'll PROVE IT!

- ★ ENERGY SAVINGS
- ★ VARIABLE COOKING CONTROL
- ★ CAROUSEL TURNTABLE
- ★ CAROUSEL COOKBOOK

Compare our warranty: Limited Warranty 7 years on Magnetron Tube 2 years on all other parts 2 years on related labor and in-home service

Don't buy your microwave oven until you've seen the SHARP difference!

# Prices start at \$335.00

**Peoples Natural Gas Company**

# The Wayne Herald Is Taking Applications For A NEWSPAPER CARRIER IN WAYNE



(Boy or Girl)

- No Collection
- Paid Vacation
- Twice A Week Delivery

A small Wayne Herald Route between Douglas and Main Streets from 7th to 10th.

## PHONE: 375-2600



# Want Ads

## For Sale

**FOR SALE:** AKC Scott Terrier Puppies, 9 weeks old, n34  
**FOR SALE:** A pair of small car speakers, Bass 48, Phone 375-2703, n34  
**FOR SALE:** A pair of small car speakers, Bass 48, Phone 375-3408, n34

## For Sale

**FOR SALE:** 2 year old 30-inch Roper Gas Range, May be seen at 213 East Third after 6 p.m. Price \$50, n13

**FOR SALE:** New Lund 16 ft. boat. In water 2 hours. Boat and trailer comb: \$1,300. Merlin Bressler, Wakefield, 287-2627. n13

**FOR SALE:** Two FR78-14 Goodrich steel belted radial studded snow tires. Very good condition. \$30 each. Phone 256-3813. n13

**ONE USED** girls bike, kitchen dinette set with 4 chairs, child's pool table, wall oven in working condition, child's one piece snow suit, size 12, child's snow jacket with hood, size 8, boys boots, size 5. Call 375-3238. o30

**HOUSE FOR SALE** in Allen. Call 635-2441. n64

**FOR SALE:** Wood and coal heaters and a complete line of accessories: stove pipe, dampers, elbows, stove board in many sizes. Wayne Coast to Coast. n6ff

**FOR SALE:** 889-acre improved farmland northwest of Wayne. Two sets of improvements. Currently being farmed in three separate tracts. Can be purchased in smaller tracts. Contact: Williams Management Company, Norfolk, NE (402) 371-6660. o30ff

READ AND USE WAYNE HERALD WANT ADS

## For Rent

**FOR RENT:** 3 bedroom trailer house in Wriedt Trailer Court. Call 775-1972. n13f4

**APARTMENT FOR RENT:** 1 bedroom, furnished, call 375-2650. n6f3

**FOR RENT:** Two bedroom, furnished apartment. Large living room, lots of storage space, close to college, couples or girls. Available Nov. 15th. Phone 375-2842. n13

**2 BEDROOM APARTMENT** for rent. Phone 375-1918. n10ff

**APARTMENT FOR RENT:** Phone 375-2252. o27ff

**HOUSE FOR RENT:** Newly remodeled and redecorated 3 bedrooms, call 375-1922 weekdays 1-5. o27ff

**FOR RENT:** Two and three bedroom houses. Call Property Exchange. Phone 375-2134. o2ff

## Wanted

**WANTED TO RENT:** 3 or 4 room apartment, first floor, unfurnished, near downtown. 375-1805. n6f3

**WANTED:** Land for rent, with or without improvements. Gordon Helgren, 585-4774. n13

**WANTED:** Quality fur. Top prices. Will be at M & H Apco every Saturday from 12:15-1:15 p.m. Loup River Fur, Burwell, Neb. 308-346-5204. n13f6

## Card of Thanks

**THANKS TO** all relatives, friends and neighbors for the lovely flowers and cards I received during my stay at the Immanuel Hospital in Omaha. A special thanks to Rev. Jon Vogel for his prayers. Also thanks to Rev. Tom Mendenhall for his phone call. Thanks to the neighbors for bringing food after I returned home. It was greatly appreciated. Eva Malchow. n13

## End-Of-Model CLEARANCE

End-of-Model Clearance Sale now in progress at Langol Chevrolet-Cadillac, Inc. on all remaining now 1980 Chevrolet cars, pickups and trucks. Sale dates are November 10th through the 15th. Below are some examples of the huge savings that you will find during our sale are as follows.

### REGULAR CHEVROLETS

- 2 - Caprice Classic Coupes
- 1 - Impala Coupe
- 4 - Impala 4-door Sedans
- 2 - Caprice Classic 4-door Sedans

An example of the savings you will find on these models:

Stock #216 — 1980 Chevrolet Impala 4-door.  
 List Price \$7246.34  
 Discount 1277.84  
 Net Price \$5968.50

### MALIBUS

- 2 - Malibu Classic 4-door Sedans
- 2 - Malibu 6-Passenger Wagons
- 1 - Malibu Classic Landau Coupe

An example of the savings you will find on these models:

Stock #372 — 1980 Malibu 6-Passenger Wagon  
 List Price \$7623.57  
 Discount 1123.57  
 Langol's Price \$6500.00 (Choice of two)

### CHEVETTES

- 5 - Chevette 4-dr. Hatchbacks
- 2 - Chevette Coupes

An example of the savings you will find on these models:

Stock #342 — 1980 Chevette Coupe  
 List Price \$5293.31  
 Discount 523.31  
 Langol's Price \$4770.00

### OTHER NEW UNITS

- 1 - Citation 4-door
- 1 - Camaro
- 2 - Monte Carlo
- 2 - Monzas
- 1 - Corvette

Be sure to check the savings on these models.

### TRUCKS

- 2 - 1/2-Ton 4WD's (6-cylinders)
- 1 - 1/2-Ton 4WD
- 1 - 1/2-Ton 4WD (Chevy Sport Short Box)
- 6 - 1/2-Ton 2WD
- 2 - 1/2-Ton Pickup
- 1 - 9-Passenger Suburban 4WD
- 1 - 9-Passenger Suburban 2WD
- 1 - Stop Van
- 1 - 1/2-Ton Van
- 3 - Luv 2WD
- 1 - Luv 4WD

An example of the savings you will find on these models:

Stock #335 — 1980 1/2-Ton Pickup 2WD  
 List Price \$6800.30  
 Discount 1101.30  
 Langol's Price \$5699.00

Above represent our total stock of 1980 Chevrolet's. Huge discounts. Call one of our courteous salesmen and let them show and demonstrate the unit of your choice. Units are all brand new. Financing available with payments as low as \$27.32 per \$1000.00 financed on a 48 month contract, 14.00% interest.

SALESMEN

Duane Christensen — 371-6023 Herman Johnson — 371-6942  
 Carroll Jensen — 371-4544 Norm Wendt — 371-1427

GM QUALITY SERVICE/PARTS  
 GENERAL MOTORS PARTS DIVISION

Mr. Goodwrench Says:  
 "Try Our Service Department!"  
 "It's Reputation is FIRST CLASS!"

# ANGEL

CHEVROLET-CADILLAC

West Highway 275 By Pass Phone 371-3377

## Help Wanted

**HELP WANTED:** Truck driver experienced with over sized loads. Contact Heritage Homes, East Hwy. 35, Wayne, phone 375-4770. n10f2

**PART TIME** openings for four ambitious people to work part time from their home. Married preferred. Box 147, Wayne, NE. n10f6

### HELP WANTED

**Established Firm** of over 30 years seeks Men or Women for part or full time employment in their sales department. Part time hours can be worked around your schedule. Position includes an open salary and fringe benefits. Write Box H c/o Wayne Herald

**HELP WANTED:** Responsible person for residential opening in Men's residence. Apply to Region IV Service, 206 Logan, Wayne, or call 375-4884. An equal opportunity employer. n13f3

**HELP WANTED:** Lady to help care for women in wheel chair and also to help do light housekeeping. Call 375-2019. n13

## Special Notice

**SNOW REMOVAL:** for driveways and parking lots. Call n13f3  
**HAPPY HOUR:** Mon.-Fri. from 4 to 5 p.m. All drinks are 1/2 price at the Burger Barn. n3f6

### TWO FOR ONE PRICE

PLACE YOUR ADVERTISEMENT IN THE WAYNE HERALD AND IT AUTOMATICALLY RUNS IN THE WAYNE MARKETER — FREE OF CHARGE!  
 STOP IN OR CALL 375-2600

**SPECIAL:** Reduced prices on all GE countertop microwaves in stock. See Doescher Appliance, Wayne. n13

### MOVING?

Don't take chances with your valuable belongings. Move with Aer-9 Mayflower, America's most recommended mover.

### Now Dry Cleaning Service in Wayne.

One of the best in the business. Bear's Dry Cleaning Service is now located in the Montgomery Ward Catalog building — bring all your fine clothes — drapes and curtains for our prompt and courteous attention.  
 • Bulk Cleaning  
 • Clean and press  
 • Affordable rates.

**JAN'S DOG GROOMING** Service, 409 West 3rd, Wakefield, NE. Call 287-2046 for an appointment. n10

**See Thies-Brudigan, Inc., your local IH dealer** for top quality IH equipment, parts and service after the sale.

**For the Finest in Custom Drapery "Material and Service" Phone 375-1801 Jack Tomrdle Kuhn's Carpet & Drapery Wayne, Neb.**

### Lost & Found

**LOST:** Black cat with white spot on neck, vicinity of 4th and Pearl. Call 375-4410 after 4 p.m. n13f2

**LOST:** Sunday west of Wayne, Kodak 35 mm Pony camera. Reward. Call collect 371-1610. o6f3

## SOLAR HEAT

you can afford!

**THE MODEL 40 SOLAR SPACE HEATER** **Just \$825 INSTALLED**

Provides heat whenever the sun is shining! No gas or fuel bill to Pay — No expensive installation costs — do it yourself!  
 Call: Steve Hall 375-4952 Wayne  
 40% Fed. Tax incentive applies!

## Automobiles

**FOR SALE:** 1970 Chevelle SS 396. In excellent condition. Call 584-2214. n13

**DON'T EVER** buy a new or used car or truck until you check with Arnie's Ford-Mercury, Wayne, 375-1212. We can save YOU money! a14ff

**FOR SALE:** 1967 Ford F-100 Pickup. Long box, V-8, 4-speed, new inspection, runs and starts excellent. 375-3349. n13

**FOR SALE:** 1974 Mustang II, 4 speed, 55,000 miles, \$1850. Call 375-3758. o31f

**FOR SALE:** 1980 2-door Cougar XR-7. Bittersweet/white, 302 engine, automatic overdrive, P.S., P.B., air, AM/FM/Cassette, 4800 miles. Cruise. Call 375-1600 days — ask for Claudia. 375-3723 evenings. n6f3

**WANT TO RENT-A-CAR?**  
 See Us FIRST!

**ARNIE'S**  
 Open Evenings

### Business Opp.

**OWN YOUR** own Jean Shop: go direct — no middle man, no salesman's fee. Offering all the nationally known brands such as Jordache, Vanderbilt, Calvin Klein, Sedgefield, Levi and over 70 other brands. \$14,500.00 includes beginning inventory, airfare for 1 to our national warehouse, training, fixtures and Grand Opening Promotions. Call Mr. Tate at Mademoiselle Fashions 704-289-4547. n13

### Wayne Vets Club

Try our Thursday Night Special and be sure to be at the Vet's Club at 8 p.m. for the \$1,000 Give-Away drawing.

**FOR SALE:** 1974 Chevy 3/4-Ton Pickup. Automatic, air, west coast mirrors, new disc brakes. Stool at \$1,150 375 3688, 510 Hillcrest. n13

**FOR SALE:** 1949 Chevy 3/4-Ton pickup. Runs good. Also 1952 Chevy 3/4-Ton pickup for parts. Call 375-2494 after 5 p.m. n13

## Coins-Gold-Silver Class Rings Paying Cash

**SELL NOW BEFORE THE MARKET PRICE GETS ANY LOWER!**  
**TOP DOLLAR FOR**

COIN COLLECTIONS & ACCUMULATIONS	CANADIAN COINS '66 & EARLIER	WORLD COINS MARKED .90 SILVER	KENNEDY HALVES '65-'69
PAYING CASH FOR:		GOLD SILVER U. S. COINS 1964 & BEFORE	
Gold Scrap Rings, Bracelets Jewelry, Chains	Dental Gold used or new wanted	STERLING SILVER REGARDLESS OF CONDITION	

**SCHOOL CLASS RINGS**  
**MEN'S LARGE RING 14K UP TO \$200.00**

**SILVER DOLLARS (1935 & Before)**  
**FROM \$12.00 to \$1000.00**

**PAYING CASH FOR: STERLING SILVER**  
**ANYTHING MARKED STERLING • SPOONS • FORKS • KNIVES • PLATES • CANDLESICKS • TRAYS • FRAMES • TEA SETS, etc.**

Thursday, Nov. 6 thru Saturday, Nov. 15  
 10 a.m.-8 p.m. — Sat., Nov. 15 Only 10 a.m.-5 p.m.

## DIXON COIN COMPANY

Bill's G.W. — 6th & Dearborn — Wayne, Nebraska  
 Will Also Be Located at Norfolk

For appointment call 402/494-2908 S. Sioux City, Nebraska

# \$7,000 IN BONUS BUCKS ALREADY GIVEN AWAY

## 7 Winners in only 18 Weeks of Bonus Bucks....



The latest additions to our growing list of participating merchants are Melodee Lanes and Logan Valley Implement.

### Be in one of these participating stores Thursday Night at 8 o'clock and you might win \$1,000 in Bonus Bucks

Arnie's Ford-Mercury  
Associated Insurance  
Ben Franklin Store  
Bill's G.W.  
Black Knight  
Burger Barn  
Carhart Lumber Co.  
Charlie's Refrigeration  
Chrysler Center  
City of Wayne  
Coast to Coast Store  
Mel & Ruth Elafson — owners  
Coryell Derby  
The Cupboard  
Diamond Center

Discount Furniture  
Dooscher Appliance  
El Toro  
Eldons Standard  
Ellingson Motors Co.  
The 4th Jug  
First National Bank  
Fredrickson Oil Co.  
Griess Rexall  
Jeff's Cafe  
KTCH  
Karl's  
Kaup's T.V.  
Kings Carpets  
Kuhns Department Store

Jack Tomrdle Kuhns Carpet  
and Draperies  
Logan Valley Implement  
McDonalds  
Melodee Lanes  
Merchant Oil  
Mike Perry Chev-Olds  
Morning Shopper  
Northeast Nebraska Insurance Agency  
Pamida  
Peoples Natural Gas Co.  
Rick's Super Foods  
Sex-Mar Drug  
Sherry Bros.  
State National Bank & Trust Co.

Surber's  
Swans Ladies  
T&C Electronics  
TP Lounge  
The Rusty Nail  
Thies-Brudigan  
Triangle Finance  
Wayne Book Store  
Midwest Federal Savings & Loan  
Wayne Grain & Feed  
Wayne Herald  
Wayne Shoe Company  
Wayne Vets Club  
Wellman's IGA  
Western Auto

# There's No Limit...

to the money you'll save shopping



Welcome To Wellman's IGA

New Store Hours

Mon. thru Sat. 8 a.m. - 9 p.m.

Sunday 10 a.m. - 6 p.m.

Ad prices effective thru Tuesday, November 19, 1980



Armour Gold'n Plump Fresh Roasting (5-7 Lb. Avg.)

**Chickens**

**79¢** Lb.



Dubuque Sandwich Style **Canned Ham**

**\$4.99** 3-Lb. Can

Choice Meat... Choice Savings

- IGA Tablerite USDA Choice Boneless **Round Steak** \$1.89 Lb.
- IGA Tablerite USDA Choice Boneless **Rump Roast** \$1.99 Lb.
- IGA Tablerite USDA Choice Boneless **Sirloin Tip Roast** \$1.99 Lb.
- IGA Tablerite USDA Choice Boneless **Sirloin Tip Steak** \$2.29 Lb.

- Hormel Black Label **Sliced Bacon** 1-Lb. Pkg. \$1.59
- Armour Star **Smokie Links** 12-Oz. Pkg. \$1.29
- Louis Rich Chunk Style Boneless **Turkey Ham** (1 1/4-Lb. Avg.) Lb. \$1.59
- Oscar Mayer Round or Square **Variety Pack Lunch Meat** 12-Oz. Pkg. \$1.69
- Klement's Holiday **Sulze** Chunk Style Lb. \$1.69
- Dubuque **Chili Rolls** 1-Lb. Roll \$1.69



IGA Tablerite Skinless

**Wieners**

**\$1.19** 1-Lb. Pkg.



IGA Tablerite USDA **Full Sliced Round Steak**

**\$1.89** Lb.



Del Monte **Catsup**

**79¢** 32-Oz. Btl.

IGA **Tomato Juice** 46-Oz. Can **69¢**

Larsen's **Veg-All** 16-Oz. Can **3 / \$1.00**

IGA **Oyster Crackers** 12-Oz. Bag **59¢**

Richelleu Stems and Pieces **Mushrooms** 4-Oz. Can **2 / 89¢**



Crisp California **Lettuce**

**39¢** Head

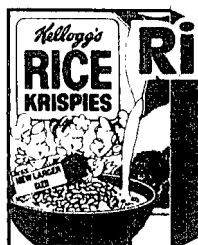
Minnesota Red Delicious or Jonathan **Apples** 3-Lb. Bag **79¢**

Indian River Red or White **Grapefruit** Each **6 / 99¢**

Florida Large **Tomatoes** Lb. **49¢**

Super Select **Cucumbers** Ea. **5 / 89¢**

Temco Brand **Radishes** 1-Lb. Cello **39¢**



Kellogg's **Rice Krispies**

**1.99¢** 13-Oz. Box

Bumble Bee Chunk **Tuna** Oil or Water Packed 6 1/2-Oz. Can **89¢**

Generic Assorted **Fruit Drinks** 46-Oz. Can **57¢**

Generic **Sweet Pickles** 16-Oz. Jar **79¢**

Generic Sweet **Cucumber Slices** 16-Oz. Jar **69¢**



Kellogg's **Crouettes**

**59¢** 7-Oz. Box

Soft 'N' Pretty Assort. or Decorated **Bath Tissue** 4-Roll Pkg. **89¢**

25¢ Off Label **Bounce** Fabric Softener 60-Ct. Box **\$2.59**

27¢ Off Label **Palmolive** Dish Liquid 32-Oz. PIST. **\$1.39**

35¢ Off Label **Era** Laundry Detergent 64-Oz. PIST. **\$2.86**

Regular or Unscented **Soft & Dry** Deodorant 1 1/2-Oz. Roll-On **\$1.29**

Regular or Extra Body **Silkience** Hair Conditioner 7-Oz. PIST. **\$1.27**



IGA Angle Food **Cake Mix**

**1.89¢** 15-Oz. Box

Generic **Quick Oats** 42-Oz. Ctn. **99¢**

Generic **Cat Litter** 25-Lb. Bag **\$1.69**

Karo Red Label **Syrup** 16-Oz. Btl. **69¢**

Pillsbury Assorted Snack **Bread Mixes** 15 1/2-17 1/2 Oz. Boxes **\$1.09**



Kraft **Velveeta**

**\$2.89** 2-Lb. Loaf

IGA **Cream Cheese** 8-Oz. Pkg. **69¢**

Sunkist Frozen **Orange Juice** 12-Oz. Can **69¢**

IGA **Ice Cream** 1/2-Gal. ctn. **\$1.39**

Farmers Choice Froz. Crinkle Cut **Potatoes** 2-Lb. Pkg. **49¢**

Chiffon Soft Stick **Margarine** 1-Lb. Qtrs. **59¢**

Swanson's Dark Meat of Breast Portion **Chicken Dinners** 1 1/2-Oz. Pkg. **89¢**

Mrs. Smith's Frozen **Apple Pie** 28-Oz. Pkg. **\$1.19**

Your Favorite Brands at Budget Saving Prices!

Brach's Assorted **Chocolate Candies** 4 1/2 to 7 1/2 Oz. Pkgs. **79¢**

Flavor Kist Assorted **Cookie's** 20-Oz. Pkg. **99¢**

Fresh From Our Oven **Natural Grain Bread**

**85¢** Loaf

# Editorial

## Some Survive Surprising General Elections

**CAPITOL NEWS**  
By Melvin Paul  
Statehouse Correspondent  
The Nebraska Press Association

Some state senators survived stiff challenges in the Nov. 4 election but others did not, according to the unofficial returns.

In perhaps the most fiercely fought campaign, incumbent Steve Fowler came out ahead of Jerry Sellentin in Lincoln's 27th District. The two candidates spent nearly \$100,000 during the months of efforts to woo the voters. Their race was the most expensive ever waged for a seat in the Nebraska Legislature.

A surprise to political observers was the upset by George Fenger of Sen. Frank Lewis of Bellevue, chairman of the Legislature's Executive board, considered by many the most powerful position in the Unicameral.

In the Omaha area races, Karen Kilgarin defeated Sen. Patrick Venditte, Marge Higgins edged Sen. Ray Powers, incumbent Dave Newell came out ahead of former longtime lawmaker George Syas and Steve Willitala won over Russ Sawyer for the seat being vacated by Sen. Neil Simon.

Other incumbents who lost were Barry

Reutzel of Fremont, defeated by Lowell Johnson, Nelson Merz of Falls City, defeated by Willey Remmers of Auburn and Orval Keyes of Springfield, who lost to Emil Beyer of Gretna.

The unofficial vote totals did not include some absentee and disabled ballots that had not been received by election day but which had to be received by the Thursday following the election day.

Although the legislative races are advertised as non-partisan, there was strong partisan involvement in at least some of the contests. State Republican officials said they were pleased with gains made in the Unicameral membership by members of their party and attributed the GOP's success to the quality of the candidates, the issues and good organization.

The much talked about Constitutional Amendment No. 4, which called for a "thorough and efficient" school system without imposing too heavy a burden on property taxpayers, was defeated. The proposition led in the early balloting but eventually fell far behind.

**Beginning to organize**  
An official with the National Institute of

Mental Health says families of mentally ill persons and some former mental patients are beginning to organize in an effort to make the needs of the mentally ill better known.

The Statement was made by Judith E. Turner during a recent appearance in Lincoln. She described the development as important because those directly involved with the mentally ill can support each other and solve many problems on their own.

Ms. Turner, a former Nebraskan, is chief of the institute's community support and rehabilitation division.

She said she was pleased with the effort Nebraska is making to identify problems of chronically ill mental patients.

A task force that was directed last March to study services for the chronically ill has issued its first report. The task force said Nebraska's services are fragmented and lack a cohesive, integrated mental health delivery system to serve the estimated 47,000 chronically ill mental patients in the state.

Ms. Turner said families of mentally ill people should talk about their problems and make their needs known to appropriate government agencies and community

groups.

According to Ms. Turner, mental health agencies need advice from former patients and their families to make sure that what the agencies propose to do is relevant.

Once agreement is reached on what should be done, family and patient groups can organize into an influential group that can have clout with lawmakers, she said.

Ms. Turner addressed a conference on the chronically mentally ill that was presented by the Nebraska Department of Public Institutions.

**Criticizes water statements**  
Sen. Chris Beutler of Lincoln has said Gov. Charles Thone seems to contradict himself in his statements on water issues.

Beutler said Thone's remarks at a recent National Water Resources Association meeting "are difficult to reconcile with his inaction at the critical moment last year."

The Lincoln lawmaker said the Legislature's Public Works Committee advanced only one major piece of water legislation in the last session. He said the substance of the bill was in the standing committee amendments which had to be adopted separately under legislative rules.

Those amendments failed by one vote and Thone "didn't lift a finger to help," Beutler said, adding the governor had been asked by supporters of the bill to support "the important committee amendments."

**Number of veterinarians stable**  
The state Health Department, in a health manpower report, said the number of veterinarians in the state remained stable in 1978.

The report was considered significant by those who are closely watching the farm-ranch pressure for establishing a college of veterinary medicine at the University of Nebraska-Lincoln.

Those who oppose construction of such a facility have argued the state has an adequate supply of veterinarians and that other UNL needs should be met before a new college is established.

The Health Department said there were 420 veterinarians practicing in Nebraska in 1978, compared with 418 a year earlier. The study showed there were 815 veterinarians in the state, including those who are retired or are engaged in other fields. That 815 number was up 2.3 percent from the previous year.

The department's report said the annual percentage gains were "more than sufficient to keep pace with the growth of Nebraska's population," although they are below the average gain of all health professions in the state, which increase about 5 percent annually.

The report said about 62 percent of the practicing veterinarians specialized in large animals but those listing cattle practice as their exclusive specialty declined from 34 to 24. Those who had a mixed practice with large animals increased slightly.

The department said 15 veterinarians moved into the state in 1976, the same number as moved out. In 1977, five moved into Nebraska and 13 left the state and in 1978, 13 moved into Nebraska and 19 left.

The report said only nine of the 93 counties did not have a resident veterinarian and that the distribution pattern is "remarkably uniform, with no major areas of the state appearing to be seriously deficient."

Nebraska veterinary students are trained under agreements negotiated with other states. Currently 65 Nebraskans are enrolled in other states' schools and about 20 graduate annually, the report said.

## It's Embarrassing

Wayne is a community which has much of which to be proud. It has an excellent — one of the best — educational system. It is one of the more attractive, neatly kept communities in the state. It was honored just recently with the prestigious "All-Nebraska" award for meeting a series of difficult criteria.

It has programs centered around the youth of the community, providing youngsters with year round recreational and cultural opportunities. It has a well-respected industrial park.

These are just a few of the reasons Wayne is well respected around the state.

But there appears to be a problem among the more adult population of Wayne — no desire to become better rounded from a cultural standpoint.

The Wayne Community Choir, directed by high school instructor Matt Smith, is strong in quality of voices but weak in numbers. At the latest count, only 10 persons from the community could find time to offer their time and talents for a better Wayne.

With the talented college community and the local community, there must be more voices hiding somewhere. The choir meets each Tuesday from 7:30 to 9 p.m. at the Methodist Church and persons with reasonable singing talent are needed to put another feather in Wayne's cap.

It's embarrassing when Laurel, a population about one fifth that of Wayne, has a weekly turnout of 70 vocalists, and Wayne has but a seventh of that.

We'd be more embarrassed to find that potential singers for our community are sitting in front of the tube on Tuesday's watching those thought provoking programs of the new television season. Dan Field, Editor

## WAY BACK WHEN

**30 years ago**  
November 16, 1950: Warren Ellis, son of Mr. and Mrs. W. L. Ellis, Wayne, is playing with the recruit trainer command band at the Naval Center, Great Lakes, Ill. Hoskins firemen were called to the John Thiel farm Tuesday noon to extinguish a hay fire. A hay rack was destroyed but the volunteer firemen saved most of the hay stack. Walter E. Hammond will speak on his experiences in Korea where he managed Korean industries for two and one-half years at the Tri County Corn and Garden Show held tonight. Jim Marsh and Steve Pawelski were awarded "W" letters this week for their participation in Junior High football.

**25 years ago**  
November 17, 1955: Contracts for construction work involved in the relocation of Highway 35 between Wayne and Wakefield are scheduled to be let today at Lincoln. Six Wayne High students are attending the State Music Clinic today at Hastings. Making the trip were Deanna Baier, Phyllis Cook, Don Wightman, Dave Ratzlaff, Jerry Leuders and Roland Temme. Faythe Johnson Monday night was named winner of the JC sponsored Voice of Democracy contest in Wayne. Miss Johnson, 15, Wayne Prep Junior is the daughter of Mr. and Mrs. Henry Johnson. Dixon's post office will move to a new building Dec. 1. It was announced this week by Postmaster Lowell Saunders. Approval of the new building by the Post Office department was secured last week.

**20 years ago**  
November 17, 1960: From 125 to 130 bushels of corn to the acre as the field goes is the average being established by John Mohr as the picking season gets into full swing in the county. Mohr, who farms a mile

east of Wayne, said his corn is all irrigated and the rows are 37 inches apart. A Wayne County shipper, Lawrence Jochens topped the Omaha market last week with 20 steers going at \$26.25. Iowa election results were of particular interest to Mr. and Mrs. J. G. Kyt, Wayne. Their son, John Kyt, was re-elected Congressman from the fourth district in Iowa. George Wintz severed the little finger of his right hand Wednesday in a cornpicker accident.

**15 years ago**  
November 11, 1965: Steve Carman, son of Mr. and Mrs. Richard Carman, Wayne, received the highest award a Boy Scout can attain Sunday when the God and Country award was presented to him at the worship services in Redeemer Lutheran Church. Neal Rohrke, son of Fred Rohrke has been selected as a member of the crack drill team, the Kemper Guardsmen, at Kemper Military School, Boonesville, Mo. 96 firms have taken plans for various aspects of the work on the new Wayne high school building according to Davis and Wilson, architects. Following a Wakefield football game a player who had been injured told his mother "As I laid there on the field I wasn't worried about how bad I was hurt — I was just afraid you'd come out on the field."

**10 years ago**  
November 12, 1970: Open house and dedication ceremonies for the new half-million dollar Winside Elementary School will be held Sunday, J.M. Masten, superintendent of schools, said Mel Olson from the State Department of Education in Lincoln will be the guest speaker. Miron Jenness, English instructor in the Wayne Middle School and president-elect of the Wayne Education Association, has been appointed a member of the District III Nebraska State Education Association Committee on Professional Rights and Responsibilities. Open house has been set Sunday at St. Paul's Lutheran Church in Winside as a farewell gesture for the Rev. and Mrs. H.M. Hilpert who plan to retire and move to Paris, Ill., concluding a 47 year ministry with the Winside congregation. Students in the public schools in Wayne, Winside, Hoskins and Wakefield can now receive their hot lunches free or at a reduced price if their parents qualify under certain income guidelines adopted by the four school boards.

## Tax Reductions With A Bonus in Savings

Middle income taxpayers are unhappy and with plenty of cause. They have been reminded by recent statistics that they not only shoulder a larger share of the tax burden, but that due to inflation that share keeps getting larger.

The new figures were reported by the Internal Revenue Service, based on a study of 1979 tax returns which the agency processed

the first seven months of this year.

These figures indicate that individuals in the \$15,000 to \$30,000 income range bear the greatest share of the tax burden — 60 percent of all federal income taxes paid for 1979.

In comments for the Congressional Record, Rep. James T. Broyhill (R-N.C.) said it is "disturbing" that the middle class

share in 1977 was under 60 percent in 1977. Meanwhile, the share of taxes paid by those with incomes under \$10,000 amounted to only 4.4 percent of all taxes in 1979, compared with 5.6 percent two years ago.

"The figures contained in the IRS study," he concludes, "indicate an alarming shift of the federal income tax burden toward the middle income class, concentrating an ever

increasing portion of all federal income taxes on these taxpayers."

As taxpayers have come to learn, to their great chagrin, inflation plays tricks on them. As they earn more money simply to offset the higher cost of living, they are pushed into tax brackets that take a larger percentage of their income.

Rep. Broyhill cites data of the Tax Foundation, an impartial research organization, showing the increase in tax burden of a typical worker with a median income of \$20,000 and supporting a spouse and two children. In 1979, the worker paid \$4,814 in direct and indirect federal taxes, or 26.7 percent of his earnings. In 1980, his taxes will eat up \$5,441, or 27.3 percent of his earnings.

The U.S. Chamber of Commerce points out that inflation, plus the growing prevalence of two-earner families, is rapidly increasing the number of taxpayers being pushed into 50 percent and higher tax brackets.

These are the taxpayers who, in a recent survey by the Gallup Organization, helped form an overwhelming majority who favor a cut in income tax rates, rather than a tax credit to help offset scheduled increases in Social Security.

The Chamber supports across the board cuts in all income tax rates.

In favoring a reduction of the maximum tax rate from 70 to 50 percent, the Chamber argues that the move would equalize the tax on investment income with the tax on earned income and encourage people to invest.

"The increased investment induced by cutting the top individual rate would lead to greater employment and higher wages at all income levels," the Chamber maintains.

Revenue losses from such tax cuts can be wiped out by an expanding economy in 1984 and 1985, rates were cut across the board, yet taxes paid by the highest income group, those with adjusted gross incomes of \$100,000 or more, rose by 50 percent, from \$2.46 billion in 1963 to \$3.76 billion in 1965.

As Congress debates tax reduction proposals it behooves its members to put aside popular but inflationary tax notions of the past. Already a strong consensus has emerged in the White House and Congress for tax relief designed to spur business growth through greater allowances for capital investment and greater productivity.

Needed also is a consensus that it's time to make individual Americans more productive, in the sense that they have more to save of their earnings. The upcoming debate over individual tax reductions must focus on this new concern.



## OUT OF OLD NEBRASKA

Nebraska State Historical Society

**Moving from Ft. Sidney to Ft. McPherson, 1877.**

During the Indian Wars period in Nebraska, Army officers and dependents made frequent transfers from one post to another. One officer and his wife are known to have averaged one move for each year of the 12 years they were married. Moves meant disruption of the household and uncertainty as to what quarters would be available at the new post, sometimes they brought improvements in housing, sometimes not. There was the additional question of whether the family servants — if any — were willing to move.

Short notice was usually given, with no consideration for time of season. Moving in winter, especially with small children, was a trying experience. Army medical officers were moved as often as line officers. In November, 1877, Assistant Surgeon Charles Winne, his wife Caroline, and their small son were transferred from Sidney Barracks (Cheyenne County) to Fort McPherson (Lincoln County). The Winnes had been stationed at Sidney for three years and were understandably upset about making the move. Yet, they were fortunate because they could cover most of the distance on the Union Pacific Railroad and had to travel only 20 miles by an enclosed Army ambulance.

After they arrived at Fort McPherson, Caroline wrote her brother in New York of their move, the new post, servants and unhappiness with the Army. Excerpts from her letters in Nebraska State Historical Society files give an interesting view of this facet of frontier Army life:

"Your letter came this morning and I will improve the time while baby is quiet and does not need me to tell you of our journey and of this post."

"We left Sidney Monday evening and reached North Platte about 2 o'clock A.M. Tuesday I stayed there with baby and Charlie came over to this post to select quarters and to get something done. My girl (servant) came back Tuesday evening and Charlie came back on Wednesday for us and yesterday morning about ten o'clock we started over in a nice comfortable ambulance. It was intensely cold (about zero) but we were well wrapped up and did not suffer at all. Baby slept all the way. I have a lovely set of white furs for him long cloak and hood and he cannot get cold. We came over in about two hours — and were very hospitably welcomed by Gert Carr and his very pleasant wife. He is the commanding officer. We have a large pleasant room and shall stay here till we get our little box fixed up."

"This is a very large post, but there are but three companies here now, one of the 5th Cav. and two of the 9th Inf. The post is a very old one and the quarters all one story brown houses and all very dilapidated. It is a rather desolate looking place, but the hospital is nice, and the house we have taken has been occupied by the Quarter Master and is really in a very good order; the best of any here. It is very small. I will make a little plan of it as best I can. But snug and easily be kept in order and kept warm, for this is a cold place."

"We regret very much leaving Sidney Barracks but this is a good place to go on leave from and you may see us someday."

**The leaky bucket**

The leaky bucket theory of government now has a corollary axiom. The bottomless bucket.

Under the leaky bucket theory, it is taken for granted that all tasks assigned or taken over by the federal government automatically will cost more due to waste, inefficiency or fraud.

One of the more notorious evidences of this theory is a study made several years ago of the former Department of Health, Education and Welfare (HEW), which showed that fraud, abuse and waste in its programs cost taxpayers \$6.3 to \$7.4 billion a year.

Now it develops that government leakages occur not only when the government spends money but when it gives it away. According to Oklahoma officials, federal grants totaling \$1 million for a technical education program were turned down because it would cost \$3 to administer every \$1 sent from Washington.

The state's regents of higher education concluded they could not afford to spend approximately 80 percent of the money on paperwork and other compliance requirements. One of the conditions would have required the state to do follow-up studies on the 27,000 students who take part in the program, each year, as well as follow-ups on their employers.

"The U.S. Chamber of Commerce has a point when it keeps insisting that Congress should gradually reduce federal spending, which now is approximately 22 percent of national income, to a more reasonable 20 percent in two years."

The less the government leaks out in buckets, the less it costs taxpayers in leakage.

Curator Tom Buecker, Neligh Mills, Branch Museum of the Nebraska State Historical Society



Senior Citizens Plan Craft Sale

Senior Citizens completed plans for a craft, food and white elephant sale to be held Saturday, Nov. 15 at the fire hall beginning at 10 a.m. Coffee and cookies will also be sold.

the business meeting, Mrs. Lem Jones and Mrs. Esther Batten read the secretary and treasurer's reports.

Mrs. Woods will be the Nov. 20 hostess. Coffee Held Mrs. Perry Johnson entertained at a coffee Saturday, Nov. 8 to honor the birthday of Mrs. Robert Johnson.

EOT Club Met Mrs. Gilmore Sahs was the hostess for the EOT Club meeting on Thursday, Nov. 6. Mrs. Ray Loberg was assisting hostess.

Marian Jordan; Senior Citizens bingo. Wednesday, Nov. 19: Happy Workers Social Club, Mrs. Cliff Rohde; Social Neighbors, Mrs. Duane Creamer; United Presbyterian Women.



Parade Includes Auxiliaries

MEMBERS OF THE Wayne American Legion, Veterans of Foreign War and Disabled American Veterans Auxiliaries participated in the traditional Veterans Day Parade down Main Street Tuesday morning.

Midwest Industries Quality Cabinets 200 WALNUT YANKTON, SOUTH DAKOTA 57078 PHONE (605) 665-4271. Announcing Our New CASH & CARRY CABINET PRICES 63% OFF. You bring in the measurements, You take the cabinets home with you, You save money.

United Methodist Church (Kenneth Edmonds, pastor) Sunday: Sunday school, 10 a.m. with worship service, 6:45 p.m. Presbyterian-Congregational Church (Gail Axen, pastor) Sunday: Combined worship at the Congregational Church, 10:30 a.m. Social Calendar Thursday, Nov. 13: Carroll Womens Club, 12:30 p.m.

BELDEN NEWS Mrs. Ted Leapley 985-2393

Belden Gets Honorable Mention At NCIP Program in Lincoln

Belden was one of six small town finalists receiving honorable mention in the Nebraska Community Improvement Program (NCIP).

and awards presentations in the evening. While in Lincoln, Mr. and Mrs. Fuchs visited with their sons, Ted and David of Lincoln.

Nettie Jacobson and Mrs. Freda Swanson read Thanksgiving prayers. A covered dish lunch was served.

EXPERT WHEEL BALANCING & ALIGNMENT at Merchant Oil Co.

Do Sure To Stop in Thursday at 8 p.m. for the \$1,000 Give-Away 121 W. 1st Wayne 375-3340

BILL'S STORE HOURS 8 A.M. - 9 P.M. Mon. thru Fri. 8 A.M. - 9 P.M. Saturday 8:30 A.M. - 6 P.M. Sunday. Prices good Wednesday, November 12 thru Tuesday, November 18.

KITCHEN TREAT POT PIES 5 for \$1.00. GILLETTE ICE CREAM ALL FLAVORS \$1.39. NORTHERN NAPKINS 250 Count 87¢. CRISCO SHORTENING 3-lb. Can \$2.19.

ROUND STEAK U.S.D.A. CHOICE \$1.09 lb. BONELESS FAMILY STEAK \$2.09 lb. BONELESS RUMP ROAST or BONELESS SIRLOIN TIP ROAST \$1.99 lb. BONELESS HEEL ROAST \$1.59 lb.

GROUND BEEF \$1.19 lb. GROUND CHUCK \$1.49 lb. STEW BEEF \$1.79 lb. LITTLE SIZZLERS 12-oz. pkg. \$1.19. WIENERS 12-oz. Pkg. \$1.09.

BREAD 59¢. FRUIT PIES \$1.00. GILLETTE HALF & HALF 1% MILK 39¢. FRESH PRODUCE CALIFORNIA PASCAL CELERY 59¢.

PAPER TOWELS 4-Roll Pack 96¢. Jumbo Roll 68¢. BLUE BUNNY CHIP DIP 89¢. FRITOLAY DORITOS & TOASTITOS 89¢.

SHURFRESH TURKEYS 89¢. TIPPECANOE PARTS MISSING DUCKS 79¢. FARMLAND BACON 79¢. WIMMERS SKINLESS WIENERS 12-oz. Pkg. \$1.29.

SHURFRESH STEW BEEF \$1.49. HORMEL LITTLE SIZZLERS 12-oz. pkg. \$1.19. SHURFRESH ALL MEAT WIENERS 12-oz. Pkg. \$1.09.

WAYNE JAYCEES STAG Saturday, November 22, 6 p.m. - 7 Mountain Oyster Feed at the Wayne Country Club. Proceeds to go for development of new softball field.



## Allen Turkey Shoot Collects \$800

ALLEN CONSOLIDATED SCHOOL band members held a Turkey Shoot Saturday evening at the school auditorium. Included were assorted games such as fish ponds, cake give aways and a variety of other booths. The students reported collecting more than \$800 with the money helping pay for a trip to Dakota Days next May at Rapid Ci-

ty, S.D. The carnival like atmosphere provided many participants with free turkeys, hams or ducks for their holiday tables. Also given in prizes were decorated cakes and three boxes of groceries. Music boosters served taverns, ice cream bars, doughnuts, popcorn and drinks.

## WSC Faculty Includes Army Brat, Sheepdog Salesman

Of all the new faculty around the Wayne State College campus this fall, Marie Hoyt of the home economics division is probably the only one who put herself through college by raising and selling old English sheepdogs.

With the money she earned from selling the dogs, she was able to pay for most of her college tuition.

Born and raised in Jackson, Mich., Hoyt graduated from Northwest High School in Jackson in 1971. She attended college at Michigan State University where she earned both her bachelors and her masters degrees.

During her college years, she had a great interest in international politics and was active in the human rights efforts.

She graduated from Michigan State University with high honors and was a member of two honor societies. The honors college at Michigan State University and Omicron Nu National Honor Society.

Upon graduation, she received a scholarship through the Rotary International to study in a foreign country. She studied first at the University of Bath in England and then at the University of Jordan in Amman in the Middle East. She then toured Europe for four months and finally returned to the U.S. and here to WSC.

According to Hoyt, coming to Wayne was ideal for her because it was her first full time teaching job and Wayne is a small town with few social distractions.

Among her interests are music, ballet and the theater. She also loves nature and would someday like to try cross country skiing.

Thirty two, overweight and turning gray, are the adjectives Paul Campbell used to best describe himself. Campbell who is a WSC faculty member of the criminal justice division is

another of the many new faculty members to be found on the WSC campus this year.

Although he was born in Denver, Campbell said he was never really raised in any one place because being an "Army brat," his family moved a lot when he was young.

He graduated in 1965 from high school in Joliet, Ill., and proceeded to West Point Academy where he received his bachelors degree in ballistics engineering.

He spent the next five years in the Army. Four of those years he was in Germany which he said he enjoyed very much.

When he returned to the U.S., he went back to school at Utah State where he received his masters in sociology and where he is presently working on his doctorate. He said that he hopes to have it within a year.

He chose to come to Wayne not only because he likes small towns, but also because WSC's emphasis is on teaching and not totally research. In addition to these, he said it pays well.

Although snow skiing and backpacking are his main interests, he takes great interest in the criminal justice division of the college too. According to Campbell, "Everybody ought to be in criminal justice because it's a good program."

Early Bird  
CHRISTMAS  
CARD SALE  
\$1.37  
20 cards with envelopes

Be Sure to Stop In Thursday at 8 p.m. for the \$1,000 Give-Away  
BEN FRANKLIN

FREE  
TERMITE  
INSPECTION

Inspector will be in town  
November 19 & 20.

Call Collect  
712-255-8911 or 402-371-6404

## THANK - YOU



I would like to express my sincere appreciation to the voters of the 17th District for the confidence they have shown in my candidacy for the State Legislature.

Gerald A. Conway

This ad paid for by the Conway for Legislatura Committee.  
Vaughn Benson, Treasurer.

## SSI Legislation Effective

Several important changes in the supplemental security income (SSI) program that were a part of legislation enacted in June, became effective in October. Dale Branch social security district manager in Norfolk said recently.

Under the old law, part of a parent's income and assets were considered or deemed to belong to a disabled or blind child who lived at home until the child reached 18 or until 21 if the child was in school. Under the new law all deeming will stop when the child reaches 18 unless it is to the child's advantage to continue deeming.

Another change concerns the money paid to an SSI beneficiary working in a sheltered workshop. Under the old law, all but \$20 a month counted against the SSI payment. Starting in October,

these payments were considered earned income. As a result, the first \$65 will count against the payment.

Before October, a non citizen of the U.S. could qualify for SSI payments 30 days after entering this country, even if he or she had a sponsor or person who agreed to financially help the non citizen. Now a non citizen is considered to have the sponsor's income and assets available for his or her support for a period of three years unless he or she becomes disabled or blind after entering this country. This provision does not apply to a person considered a refugee or who has been granted political asylum.

More information about these changes in the SSI program can be obtained at the Norfolk social security office. The people there will be glad to answer any ques-

tions. The office is located at 1310 Norfolk Ave. and the telephone number is 1-800-642-8310.

## CHRISTMAS IS A WRAP When You're A Member Of Our Christmas Club...

Join Today



Join our Christmas Club and receive  
FREE this fine Christmas Tree Ornament.



JOIN  
TODAY  
CHRISTMAS CLUB  
1981

CHRISTMAS CLUB CHECK

FREE CHECKING

Be Sure to Stop In Thursday at 8 p.m. for the \$1,000 Give-Away



The State National Bank  
and Trust Company

Wayne, NB 68787 • 402/375-1130 • Member FDIC

Main Bank 122 Main Drive-In Bank 10th & Main

## ATTENTION

Contractors • Lenders • Suppliers

Opportunity to be listed as a vendor in conjunction with Home Energy Audits

Several Nebraska gas and electric utilities will soon be offering home energy audits to their residential customers in compliance with the National Energy Conservation Policy Act (NECPA).

The program will encourage the installation of energy conservation measures, including renewable resource measures, in existing houses by residential customers of large gas and electric utilities.

NECPA requires the participating utilities to provide customers requesting an audit a master list of suppliers, contractors and lenders who sell, install or finance conservation measures.

The Nebraska Listing Agency, a joint effort of seven participating utilities, is now compiling the master Vendor List. They are attempting to contract all suppliers, contractors and lenders to enlist their participation in the program. Since no complete mailing list exists, it is likely that some interested suppliers, contractors and lenders will be missed.

If you and your firm do not receive a packet of information from the listing agency and would like information about listing requirements, please write or call:

Byrle Gross, Administrator  
Nebraska Listing Agency  
P.O. Box 499  
Columbus, Nebraska 68601  
Phone: (402) 563-5766

There is no listing fee.

### Participating Members

- Northwestern Public Service Company
- Omaha Public Power District
- Peoples Natural Gas, Division of Northern Natural Gas Company
- Kansas-Nebraska Natural Gas Company
- Metropolitan Utilities District of Omaha
- Minnesota Gas Company (Cengas)
- Nebraska Public Power District



# Farm

## Human Capital Will Help Lesser Countries

Development of "human capital" necessary to build a technological base for modern agriculture is the best long range investment in American aid to lesser developed countries (LDC's), an international program expert said in Lincoln recently.

Dr. Woods Thomas, director of international programs at Purdue University, West Lafayette, Ind., spoke to those attending a workshop on improving graduate programs for developing country nationals.

The immediate past executive director of the Board for International Food and Agricultural Development (BIFAD) for the Agency for International Development said universities have been placed in a prime role under Title XII programs designed to upgrade agricultural production in LDC's.

Dr. Thomas disparaged capital investments and expenditures from AID funds in foreign countries for such things as farm to market roads, farm production inputs and rural electrification, declaring that "high payoff investments are knowledge and

people — not fertilizer."

In identifying the problem of building a productive agriculture in LDC's, Dr. Thomas said one of the main constraints is "the sheer lack of availability of the kinds of technology" required to support an agriculture based on a given country's resources.

Related to this, he said, are two other factors — few LDC's have an indigenous research capacity and the human-institutional capacity to bring this research to bear on agricultural problems "is simply not in place."

Despite massive efforts in foreign aid, he said, most LDC's do not have means of providing farm level decision-makers with the technology to improve their operations, or simply "the extension function" as Americans know it.

Most LDC's additionally do not have educational facilities to "form the human capital" necessary to transform traditional agriculture to technological agriculture, he continued.

Dr. Thomas said the thrust of current AID policy under Title XII programs "puts the monkey

squarely on the backs" of universities in overall efforts of the U.S. to aid developing countries in agriculture, food and nutrition.

"Are we up to this massive task," he asked rhetorically, pointing out that the potential clientele includes two-thirds of the world in terms of improved agriculture.

The speaker told an audience of University of Nebraska faculty members involved in International programs that 70 percent of the total development assistance programs under the AID umbrella, excluding those related to the World Bank and other United Nations activities, are related to agriculture.

He said the "main engine for change" in LDC's must be agricultural development. Dr. Thomas noted that industrialization has been tried by some developing countries as a main thrust to improve the lot of their people, with unsuccessful results. "Most of these (industrialization programs) have run out of gas rather quickly," without concurrent or higher priority agricultural development efforts, he said.

Dr. Thomas warned against a feeling that "we can pick up land grant universities and put them down" in a developing country setting. Much technology of agricultural production is "site-specific," he cautioned. Many development officials in the past have not recognized this; he said, tending to blame native farmers in a country for lack of progress rather than the inability to transfer technology.

Those involved in international agricultural development programs must recognize that most research and development in LDC's is lodged in national ministries of agriculture, not in their universities, he said. Efforts must be made to work out new models for conducting research and transmitting it to farmers in LDC's; "we have been spinning our wheels in the past trying to create marriages between national universities and national ministries of agriculture," Dr. Thomas analyzed. In concluding remarks, he expressed the belief the Title XII concept is gaining widespread acceptance in the United States and cooperating

LDC's: there is a sharp increase in the involvement of U.S. universities in international ag development programs; AID programs are "being tilted in the right direction" in emphasizing the training of nationals and the establishment of research programs and a commensurate decline in "check-writing" aid programs.

But he warned that the support for research as a foundation for improved agriculture in LDC's is inadequate, representing only two percent of the AID budget. Likewise, he said, "our programs overall for investing in 'human capital' are totally inadequate," using for example the number of scientists and technicians that will be required to upgrade agriculture in Africa.

In answer to a question as to the probable effect of the change in administration in Washington on foreign assistance programs focusing on agriculture, Dr. Thomas said he felt there would be continued support by a reconstituted Congress of AID activities at approximately the same level, "but odds of getting increased (financial) resources are not very great."

## Natural Air Grain Drying May Save Farmers Energy

Farmers may realize energy savings from natural air grain drying and scheduled bin filling at harvest time, according to research conducted by a University of Nebraska staff member.

Dr. Thomas Thompson, Institute of Agricultural and Natural Resources professor of agricultural engineering, reported on studies conducted by him and NU graduate student Richard Pierce at a recent national Energy Symposium in Kansas City, Mo.

Thompson has been working with natural air and low temperature grain drying for the past 10 years. His current experiment involves simulation of the performance of natural-air and low temperature drying in 16 states. From these studies, he is establishing recommendations for air flow rates for drying grain

at different moisture contents and over a range of harvest dates.

According to Thompson, scheduled grain drying involves layer filling grain into several bins during harvest. By alternating bins, each layer usually can be air dried before the next layer is put in.

Thompson said that it was difficult to dry a grain bin filled at one time with high moisture grain. The contents could not always be dried before the winter months and occasionally the task had to be finished in the spring.

"Generally, grain has to be dried before winter storing. It should be below 18 percent moisture and the drying zone must be completely through the grain. The moisture content to which the grain should be dried depends on what the grain will be

used for. If it is for livestock there is no need to dry below 18 percent in the fall because half of it would be fed by spring," he said.

To save time and energy, Thompson experimented with a combination of drying with high temperature, then transferring to natural air drying to complete the drying process. Thompson said a schedule was worked out to determine the moisture content to which corn must be dried each day, to be safely handled by the natural air drying system.

A natural air drying scheduling model is available on the AGNET computer system.

"By using scheduled drying, a farmer can harvest moist grain and still get it dry before winter months while saving energy," Thompson concluded.

## Solar Heated Swine Floor

Pigs, like most animals, like warmth. However, it generally hasn't been economically feasible for a hog producer to provide heat in a growing and finishing swine confinement building.

But Dr. Dennis Schulte, associate professor of agricultural engineering at the University of Nebraska, has found that hogs perform better in a swine confinement building that included a solar heated floor — a floor that most producers could afford.

Schulte presented a paper detailing results of experiments conducted on a swine confinement building near Wahoo at the American Society of Agricultural Engineers Energy Symposium held recently at Kansas City, Mo. Coauthors are Dr. James DeShazer, professor of agricultural engineering; Gerald Bodman, associate professor of

agricultural engineering; Robert Arlani, graduate research assistant for agricultural economics; and Dr. Maurice Baker, professor of agricultural economics.

Schulte said animals are more comfortable with a floor temperature five to 10 degrees higher than room temperature.

"The difference in comfort alone means the animals perform better," Experiments were conducted to determine if a solar heated floor would increase the performance of hogs in growing and finishing confinement buildings and to see if it was economically feasible for a producer, he said.

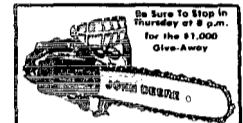
The building, which was owned by Vennie Kavan of Wahoo, was a conventional modified open front with a solar floor. Schulte estimated that adding the solar floor increased the cost from \$90 per head for a non-solar building

to \$103.50.

"Normally finishing houses don't require heat," he said. "But we found evidence that the solar floor improved feed conversion and daily gains which resulted in about a one percent savings."

Schulte said the most expensive aspect of the total cost of production is feed. According to their findings, if a one percent savings could be achieved, the solar floor would be worth the investment. He noted their estimate included a ten percent inflation rate. After five or ten years, some parts might have to be replaced, but a solar panel shouldn't be treated differently than other farm equipment. That is, the money has to be reinvested to replace worn out equipment, he added.

Farmers are going to solar heated floors for swine especially in farrowing and nursery pigs where the profit margin is even greater, Schulte concluded.



**Chained Lightning . . .**

Stop in today for a demonstration on the new line of John Deere Chain Saws. Choose from seven models — 30 to 78cc. 12- to 27-inch sprocket-nose guidebar. Each has a chisel or semichisel chain, automatic oiler, and counterbalanced crankshaft. Conveniently located handles and controls. Throttle/trigger interlock provides added safety. Get professional quality and dependability in the new line of John Deere Saws.

**Logan Valley Implement**  
West 1st Street  
Wayne  
375-3323  
Nothing runs like a Deere®

## New Forms, Fees for Soil Tests

Farmers who send soil samples to the University of Nebraska Soil Testing Laboratory will encounter new forms and fees.

But they'll have many more options for tests and analyses, said Dr. Delno Knudsen, director of the lab and extension agronomist in the NU Institute of Agriculture and Natural Resources.

Test fees will increase an average of 20 percent, making the charge for the "basic" test \$6 instead of the previous \$5. The price increase is the first since 1974, Knudsen said.

New soil sample information sheets are "easier to understand in spite of the fact they request more information," Knudsen said. With the new forms, farmers can request nutrient analyses for three crops instead of one by entering the names of the crops and their yield goals.

Farmers who have not yet decided what crop to plant can use the lab's recommendations in making that decision, Knudsen said. Or for those planning crop rotations, the lab's analyses for

phosphorous, potassium and zinc should be good for two years, he said.

More tests can be requested on the new form. Many were available before, but only by special request, Knudsen said, and often with accompanying delays in returning test results. Now with tests offered routinely, there shouldn't be a delay.

Among the added tests are an alternative test (Olson test) for phosphorus which works better on highly calcareous soils, a sulfur test for sandy soils only, a boron test, and the DTPA test for zinc, iron, manganese and copper. This last test might be preferred for determining zinc and iron requirements on calcareous soils, Knudsen said.

The heart of the changes in the testing procedures is a new computer program which can handle more options, Knudsen said. "But the quality of the soil sample sent to the lab is still the most important aspect of testing," he added.

As an incentive for farmers to take soil samples when requesting residual nitrate analysis, the fee for the test is \$3 for one surface sample and up to two subsoil samples. Collecting those deeper samples only takes a few minutes, Knudsen said, and will provide a better analysis.

County and district extension offices have the new forms now, Knudsen said, and can answer questions about them or about sampling procedures. As before, results of soil tests are transmitted to the district offices around the state on the AGNET computer system. The districts then send them to the farmer. This procedure speeds up delivery, Knudsen said, and gives district

soils specialists a chance to add their comments to the analysis.

Farmers should allow a week to 10 days for return of their results, Knudsen said, except during the Christmas season. Because of the University's holiday closing, samples need to arrive at the lab by Dec. 16. Data for samples received after that date would not be returned until after Jan. 5, he said.

Revamping of information and analysis forms and other factors of soil testing has been underway for more than a year, according to Knudsen. Farmers, county agents, and district and state staff participated in the revisions.

**THIS AND THAT FROM YOUR COUNTY AGENT**

Don C. Spitzke  
Wayne County Ext. Agent  
Univ. of Neb. — Lincoln  
Phone: 375-3310

## Wayne, Stanton Counties Show Loans of \$3,892,480

In Wayne and Stanton Counties alone, loans totaling \$3,892,480 were made to 123 farm and rural families by the Farmers Home Administration in fiscal year 1980, according to County FmHA Supervisor LaVern Ostendorf.

Ostendorf reported that loans were made to assist farmers in financing farm real estate or farm operations or to families to construct or improve their housing. Loans were also made to communities and organizations for water and sewer systems.

Operating loans totaling \$584,100 were made to 27 family farmers for purchase of livestock and equipment and farm operating expenses. Long term loans for farm ownership in the amount of \$955,320 were made to 18 families.

Emergency credit for farm operators hurt by natural

disaster or for ranchers in the economic squeeze totaled \$1,474,520 involving 52 loans. In the housing program 25 loans for \$864,840 was used to buy, build or improve individual homes.

Additional information is available at the county office located in the USDA Service

Center, 120 Logan St. in Wayne. Regular Farmers Home Administration loans are not made in competition with regular commercial lenders. Each person applying for credit will be given equal consideration without regard to race, sex, creed, color, marital status or national origin.

**PUBLIC AUCTION**

80 Acres — Wayne County Land  
2 p.m.

**Wednesday, Nov. 26**

East front door of Court House at Wayne, Nebraska

The following real estate will be offered for sale to settle the estate of Elmer Schaber, deceased.

The W 1/2 of the NE 1/4 of Section 13, Township 26, North, Range 4, East of the 6th P.M., Wayne County, Nebraska.

Located 4 1/2 miles east of Wayne, Nebraska on Highway #35 or 2 miles south of Wakefield, Nebraska, and 3 1/2 miles west on Highway #35.

**TERMS OF SALE:**  
15% cash day of sale, balance due on March 1, 1981. Sold free of encumbrance with 1980 and prior taxes paid. Purchaser furnished abstract of title. If no settlement is made on March 1, 1981 for any reason whatever then unpaid sale price shall bear interest at 10% per annum until paid.

**GENERAL FACTS:**  
Unimproved land. Approximately 10 acres of pasture ground. Balance in soy beans and corn in 1980.

**POSSESSION:** March 1, 1981

**TENANT:** Glen A. Olson

Land in choice farming area. Sellers reserve right to reject any or all bids.

For additional information contact  
**Larry McMaster - Trustee**  
%First National Bank, Wisner, Nebraska, Phone 402-529-6115  
**Charles B. or Kenneth Beckenhauer**  
Attorneys, West Point, Nebraska, Phone 402-372-2425

**Firewood**  
Firewood has more value for home use than many people think.

When compared with other heat sources, a standard cord of dry, dense hardwood provides as much heat as one ton of hard coal, 165-200 gallons of fuel oil, or 24,000 cubic feet of natural gas. The presence of substances such as oil, resins, or other extractives in wood has a tendency to change heating values for various woods. For example, resinous woods such as pine and spruce have a higher heat value per pound than many of the non-resinous woods such as hickory.

Heat values can be increased if the firewood is cut early in the year and given plenty of time to dry. Any excess water that may be present in the wood will reduce the amount of available heat. A portion of the total heat must be used to evaporate the excess water during burning. A standard cord of freshly cut green firewood will yield about 80 percent of the available heat of properly seasoned firewood.

**Care of Amaryllis**  
Amaryllis can be flowered indoors from January through April. They should be placed in bright light, which should include at least four hours of direct sunlight each day. The optimum day temperature is around 79 degrees F with night temperatures of 60 degrees F. The soil should be kept uniformly moist, but not wet. Very often the flowering stalk appears first, which is then followed by the strip-like leaves. The blooms generally last three to four days, opening in succession, therefore providing continuous color for over a week.

The amaryllis resents much root disturbance. Therefore, it is common practice to grow it for relatively long periods in the same pot or at least one of the same size. If the plant needs a larger pot, after blooming is a good time to make the shift. The soil mixture should be well drained. Do not allow the roots to dry during transplanting. Pot with one-half of the bulb above the soil to induce early flowering.

Boiling cloves in a cup of vinegar will absorb most kitchen odors.

**AMPI Associated Milk Producers, Inc. District 89 ANNUAL MEETING**

of the current producers will be held  
**WEDNESDAY, NOVEMBER 19**  
at the  
**LAUREL CITY AUDITORIUM**

Dinner will be served at 11:30 a.m. Business meeting will begin at 1 p.m. Door Prizes will be awarded following the meeting. We will be handing out refunds on capital retains and equities.

**For A HeavyWeight Head-Start, Feed Golden Sun Beef Start**

Starting calves and yearlings need extra help, and Golden Sun Beef Start 5 or Beef Start 10, both with Auro 8-700, provide that help. Feed complete Beef Start to newly arrived cattle and cattle under stress. The highly fortified and medicated pelleted feed helps correct vitamin and mineral deficiencies, aids in preventing shipping fever, and plays a large part in recovering tissue shrink.

If you prefer a starting supplement, 32% Beef Aide AS-700, will provide the same benefits.

Talk to your Golden Sun Dealer about giving your calves and yearlings a head start on their way to becoming HeavyWeights with Beef Start or Beef Aide.

Auro 8-700® Trademark of American Cyanamid Company

**GOLDEN SUN FEEDS**

**Les' Feed Service**  
1 mile east of Wayne

**HOSKINS NEWS / Mrs. Hilaa Thomas 565-4569**

# Garden Club Has Annual Family Dinner

The Hoskins Garden Club held their annual family dinner at the Hoskins firehall at 6 p.m. Sunday, Nov. 9. Guests were Paul Fenske of Philadelphia, Pa., Mrs. Rachel Wilcox of Norfolk and Jack Fenske. Acting hostess was Christine Lueker.

Bingo and cards furnished entertainment. Bingo prizes went to Mrs. Carl Hinzman, Erwin Ulrich and Mrs. Reuben Puls. Rook prizes went to Mrs. Anna Falk and Mrs. Frieda Meierhenry and pitch prizes went to Jack Fenske and Mrs. Carl Hinzman.

Mrs. George Wittler will be hostess for the clubs regular meeting on Nov. 20.

Wanfoch were honored with the birthday song. For their next meeting on Dec. 4, the Aid will have their annual no-host Christmas dinner. Children of Trinity Lutheran School will be guests. On the program committee are Mrs. Alvin Wagner and Mrs. Leonard Marten. Officers will serve on the decorating committee and the current service committee will be in charge of the kitchen.

There will be a food shower for Pastor and Mrs. Bruss and family.

The meeting closed with prayer. Hostesses were Anna Wantoch and Mrs. Otto Wantoch.

**Dorcas Society Met**  
Mrs. Jim Spiedel was hostess when the Dorcas Society of the Peace United Church of Christ met Thursday afternoon, Nov. 6 at 2 p.m.

Pastor David opened the meeting with prayer followed by group singing of the hymn, "For the Beauty of the Earth."

Mrs. Raymond Walker, president, conducted the business meeting. Members responded to roll call with a scripture verse. Secretary and treasurer reports were given by Mrs. Norris Langenberg and Mrs. George Langenberg, respectively. Plans were made for a congregational Thanksgiving dinner, Sunday evening, Nov. 23. A birthday card was sent to Mrs. Emma Bauermeister who recently celebrated her 91 birthday. Mrs. Lena Ulrich will observe her 90 birthday on Dec. 7 with an open house at the church.

Glady's Reichert was leader for the Bible study on the topic

"Jesus, the Prophet." All members took part. For their Dec. 4 meeting, the Aid is planning a no-host Christmas dinner at 12:30 p.m. Mrs. Jim Spiedel and Mrs. Carl Wittler will serve on the program committee. On the decorating committee are Mrs. Richard Behmer and Mrs. Dennis Kohlf. The meeting closed with prayers.

**Zion Lutheran Ladies Aid**  
Eighteen members and Pastor Fish were present when the Zion Lutheran Ladies Aid met Thursday afternoon, Nov. 6 at 1:30 p.m. The meeting opened with the hymn, "Just As I Am." Pastor Fish presented the topic, "The Woman Who Touched His Cloak."

Mrs. Mel Freeman, president, presided at the business meeting. Roll call was answered by paying five cents to the Penny Pot if you were through housecleaning and three cents if not. Mrs. Elaine Ehlers read the secretary's report and Mrs. Ralph Kruger gave the treasurer's report. Reports on the LWAL Rally were given by Mrs. Don Walker and Mrs. Herman Koepke.

Mrs. Clem Weich and Mrs. Harlan Weigel reported on the Hospital Aid meeting.

Mrs. Alvin Jenson and Mrs. Elmer Laubsch assisted with the Halloween party at the Pierce Manor.

Newly elected officers, who will assume their duties in January are Mrs. James Robinson, president, Mrs. Don Walker, vice president, Mrs. Darrel Krueger, secretary and Mrs. Clem Weich, treasurer. Committees for 1981 were also appointed.

Monetary Christmas gifts will be sent to World Relief, Hospital Aid, Dakota Boy's Ranch, Bethesda, Lutheran Family Service, Lutheran Old People's Home and the Lutheran Hour.

Serving on the November flower committee are Mrs. James Robinson and Mrs. Don Walker. On the November altar committee are Mrs. Lester Koepke and Mrs. Elton Weich. Seated at the birthday table were Mrs. Clemens Weich, Mrs. Harlan Weigel and Mrs. Marie Rathman.

For their Dec. 4 meeting, the Aid is planning to eat out. Acting hostess will be Mrs. Elmer Laubsch and Mrs. Ernest Eckman.

The meeting closed with prayer. Hostesses were Mrs. Fred Bargestadt and Mrs. Earl Anderson.

**G & G Card Club**  
The G & G Card Club met at the home of Mrs. Rachel Wilcox, Friday evening, Nov. 7.

Family high prize went to Mr. and Mrs. Reuben Puls, individual high to George Wittler and low to Erwin Ulrich.

The club plans a no-host chili supper at the Carl Hinzman home on Dec. 5.

Town and Country Garden Club Members of the Town and

Country Garden Club and their husbands met at the Villa Inn in Norfolk for a 6 o'clock dinner Sunday evening, Nov. 9.

The evening was spent playing cards with prizes going to Emil Gutzman and Mrs. Hilda Thomas, high and Arthur Behmer and Mrs. Howard Fuhrman, low.

The next regular club meeting will be on Nov. 25 with Mrs. Howard Fuhrman.

**Peace United Church of Christ (John C. Davis, pastor)**  
Sunday: Worship service, 10 a.m.; Sunday school, 11.  
Tuesday: Sunday school teachers meeting, 8 p.m.  
Wednesday: Golden Fellowship Group, noon, no-host dinner, choir practice, 7:30 p.m.; confirmation class, 7:30.

**Trinity Evangelical Lutheran Church (Wesley Bruss, pastor)**  
Friday: Adult information class, 12 noon  
Sunday: Sunday school, 9:30 a.m.; worship service with communion, 10:15; Bible study, 8 p.m.  
Wednesday: Young People's Society, 7:30 p.m.

**Zion Lutheran Church (Robin Fish, pastor)**  
Saturday: Saturday school, 9 a.m.  
Sunday: Worship service, 8:45 a.m.; Sunday school and adult Bible class, 9:45  
Wednesday: ZEY

**Social Calendar**  
Thursday, Nov. 13: Highland Women's Extension Club, Mrs. Norris Langenberg Circle Pinochle Club, Erwin Ulrich  
Wednesday, Nov. 19: Trinity Young People, 7:30 p.m.; ZEY  
Zion Lutheran Church 7:30

Mr. and Mrs. Carl Wittler returned home Friday, Nov. 7 after spending 10 days visiting relatives in Florida and Georgia at Orlando, Fla. they were guests of Mrs. Wittler's brother and family, the Reuben Meierhenrys and at Hampton, Ga. they visited his brother and family, the Art Wittlers. They were Thursday Nov. 6 overnight guests in the Lyle Wittler home in Lincoln.

Allred Tucker of Sioux City was a dinner guest in the E.C. Fenske home Wednesday, Nov. 5. Tucker is a nephew of Mrs. Fenske.

Mrs. Opal Roper and Mrs. Norman Falk of Sioux City were Tuesday, Nov. 4 visitors in the E.C. Fenske home.

Thursday, Nov. 6 supper guests in the E.C. Fenske home were Paul Fenske of Philadelphia, Pa., Mrs. Ida Fenske of Winside and Mr. and Mrs. Walter Fenske and Jack and Mr. and Mrs. Bill Fenske, all of Hoskins.

The Hoskins Volunteer Firemen were called to Woodland

Park, Sunday afternoon, Nov. 9 where a brush fire was burning out of control.

Dick Pingel, who had been a patient in the Lutheran Community Hospital at Norfolk the past week spent the Nov. 7-9 weekend in the Walter Koehler home. Pingel is a son of Mrs. Koehler.

Mr. and Mrs. Harry Pingel returned to their home in Aurelia, Iowa, Saturday, Nov. 8 after visiting since Tuesday, Nov. 4 in the Walter Koehler home. Other supper guests Friday evening, Nov. 7 were Mr. and Mrs. Art Lehman of Pierce.

\*\*\*\*\*  
**TRY THIS SPECIAL**  
**OLD MILWAUKEE**  
 6 Pak Bottles **\$146**  
 Warm or Cold  
**RAIN TREE** Drive-In Liquor  
 5th & Main — Wayne — Ph. 375-2090  
 \*\*\*\*\*

**-DRAWING WINNERS-**  
 • Steak for Two  
 • Truly Mutt  
 • 10 lb. Turkey  
 • Jim O'Brien  
 • Turkey  
 • Mark Glatzer



# FALL SALE

## FENCING AND ROOFING MATERIALS

**Steel Roofing & Siding**

29 Ga. Galvanized  
 1 1/4" Corrugated  
 6' to 16' Lengths

**\$29<sup>95</sup>** 100 sq. ft.

**Red Top**

5 1/2 ft. Steel Posts ..... **\$230**

6 ft. Steel Posts ..... **\$249**

---

26 in. heavy Hog Wire **\$65<sup>39</sup>**  
 20-rod roll .....

---

32 in. heavy Hog Wire **\$75<sup>95</sup>**  
 20-rod roll .....

**Red Brand**

12 1/2 ga. Barbed Wire **\$34<sup>87</sup>**  
 80-rod roll .....

---

**WE HAVE A FULL STOCK OF GOOD 1X6 AND 1X12 FIR ROUGH BOARDS**

**SLAT CRIBBING**  
 4' x 50' ROLL  
**\$29<sup>95</sup>**

---

**Red Brand Stockade Panels**  
 1/4 Inch Galv. Welded Steel Mesh

34"x 16' Hog Panels ..... **\$14<sup>49</sup>** EACH

52"x16' Combination Panels .. **\$17<sup>89</sup>** EACH

**FARMMASTER GUARANTEED GATES - IN STOCK**

## CREOSOTED POSTS (Pressure Treated) SYP

3 1/2" x 6 1/2' ..... <b>\$313</b> ea.	4" x 8' ..... <b>\$4<sup>99</sup></b> ea.
4" x 6 1/2' ..... <b>\$343</b> ea.	5" x 8' ..... <b>\$6<sup>69</sup></b> ea.
4 1/2" x 7' ..... <b>\$456</b> ea.	6" x 8' ..... <b>\$8<sup>99</sup></b> ea.

**WE'LL LOAD THE HEAVY ITEMS WITH OUR FORK LIFTS**



**Carhart LUMBER CO.**

Phone 375-2110    Wayne, Nebr.    105 Main St.

**Avoid Winter's Biggest Headache—**



## WINTERIZE YOUR CAR!

Right Now

For dependable, worry free driving all winter, see our experts for:

- TIRE CHANGE OVER
- ENGINE TUNE UP
- COOLING SYSTEM
- OIL CHANGE

Be Sure to Stop in Thursday at 8 p.m. for the \$1,000 Give Away



**CHRYSLER**

7th & Main  
375-3270



**ENTER**

WAYNE, NEBR. 68154



**Norfolk's Newest Dairy Store**

515 E. Norfolk Ave.  
 (5 Blocks E. of the Old Mill Shopping Center)

OPEN: 9 A.M. - 10 P.M. Daily

## EVERYDAY LOW MILK PRICES

Vitamin D	Gallon	<b>\$1<sup>89</sup></b>	
	2%	Gallon	<b>\$1<sup>73</sup></b>
	1%	Gallon	<b>\$1<sup>59</sup></b>

**ALSO FEATURING:**

Real Country Cream, Half & Half, Cottage Cheese, Butter-milk, Butter, Eggs, 100% Pure Orange and Apple Juice, Bread, Cheese, Yogurt and Eggnot.



**TRY OUR FOUNTAIN ITEMS:**

Banana Splits, Malts, 3-Dip Sundaes and Cones. We also feature hand packed and pre-packaged Ice Cream for your freezers.

**Stop in and see us soon!!**

**Pork College**  
**Can Sharpen**  
**Pork Skills**

Inexperienced pork producers in Nebraska can sharpen their skills by attending a pork "college."

According to Mike Brumm, district swine specialist, a "Pork Production College" will be held at Norfolk on Dec. 9, 10 and 11. Sponsored by the Nebraska Extension Service in cooperation with Northeast Technical Community College, the college is aimed at those producers with five years or less experience in raising swine as a major farm enterprise.

Topics to be covered in the three-day college include facilities, nutrition, disease and genetics. Also included will be discussions on production scheduling, performance goals, production costs and financing of operations.

Registration deadline for the college is Nov. 21 with registrations limited to the first 40 applicants. Further information is available from the local extension office or by contacting Mike Brumm at the Northeast Station, Concord.

**Police Report**

Wayne Police Department reports an act of criminal mischief recently, but has gone six days without any reported accidents.

Sometime late Oct. 31 or early Nov. 1, the plate-glass window at Western Auto, 115 W. First St., was shot out.

Investigation continues.

# Thanksgiving Remembrances Nov. 3

Nine members of the Three C's Home Extension Club answered roll call with a Thanksgiving remembrance when they met Nov. 3 in the Vaughn Benson home in Wayne. Hostess was Ina Rieth.

The meeting opened with the Extension Club Creed.

Helen Pearson reported on citizenship. She explained the amendments and encouraged all members to vote. Alice Erwin, president, told about study lessons.

Members volunteered to help sell honey on Honey Sunday. Plans were discussed for the Community Veterans Appreciation Night, which was held Nov. 11 at the Concord auditorium.

Betty Anderson reported on the book "My Antonia" by Willa

Cather. Helen Pearson received the hostess gift.

The club is planning a Christmas party at 7:30 p.m. Dec. 1 in the home of Shirley Stohler. Secret sisters will be revealed with cards, and there will be a gift exchange.

All club meetings are scheduled to begin at 7:30 p.m. throughout the winter months.

**Welfare Club**  
The Concord Womens Welfare Club met Nov. 5 with hostess Esther Peterson. The meeting opened with the creed and a reading, "America," by Margaret Anderson.

Fifteen members and a guest answered roll call with a Thanksgiving prayer. Donations of \$10 each were

made to the Good Fellows in Sioux City and Omaha, the Child Savings Institute in Omaha and the Nebraska Children's Home, Omaha.

Members were reminded of the Community Veterans Appreciation Night, which was held Nov. 11 at the Concord auditorium. Women also were reminded of a craft and food sale which will be sponsored by the Concord-Dixon Senior Citizens at the Center on Nov. 22 at 1 p.m.

Irene Magnuson was in charge of the program. She read "Thanksgiving" and led in two pencil games. Margaret Anderson read "How We Killed the Rooster."

Clubwomen with birthdays in December will be honored during a party Dec. 1 at the Senior Citizens Center in Concord.

The club is planning a Christmas luncheon on Dec. 3 in the home of Irene Hanson. A gift exchange will be held.

Anderson will be the hostess in January.

Rebekah Circle met in the evening with hostess Mrs. Doug Krie. Bible study leader was Mrs. Lee Johnson, and nine members attended. Officers for 1981 are Mrs. Verdel Erwin, leader, and Mrs. Evert Johnson, record. Mrs. Evert Johnson also will be the hostess in January.

Circles will not meet in December. An LCW Advent luncheon is planned that month.

**Missionary Society**  
The Womens Missionary Society of the Evangelical Free Church met Nov. 4.

The group did White Cross missionary work, followed with a business meeting. Mrs. John Westerholm gave devotions.

The program included a demonstration on silk flowers by Pam Schram of Ponca. Refreshments were served by Mrs. Arden Olson and Mrs. Clayton Kardell.

and blood pressure clinic at Senior Citizens Center, 2 to 5 p.m.

**Tuesday, Nov. 18: Womens Christian Temperance Union, Lutheran Church.**

**Wednesday, Nov. 19: Potluck dinner at Senior Citizens Center, noon, followed with sermonette, and business meeting.**

**Thursday, Nov. 20: Lutheran Churchwomen annual meeting and thank offering, 2 p.m.**

**Evangelical Free Church**  
(John Westerholm, pastor)  
**Saturday: Concert by Faith Alive, 7:30 p.m.**  
**Sunday: Bible school, 10 a.m.; worship, 11; evening service, 7:30 p.m.**

**Wednesday: Ladies Bible study, 9:30 a.m.; Family Night.**

**Concordia Lutheran Church**  
(David Newman, pastor)  
**Thursday: Lutheran World Relief blankets and clothing should be packed.**  
**Sunday: Sunday school and Bible study classes, 9:30 a.m.; worship, 10:45.**

**Tuesday: Womens Christian Temperance Union, 2 p.m.**

**Wednesday: Concordia Lutheran Churchmen, 8 p.m.; senior choir, 8.**

**St. Paul's Lutheran Church**  
**Sunday: Worship, 7:30 a.m.; Sunday school, 8:30.**

The Roy Hanson family spent last Saturday in Lincoln and attended the football game. They also visited in the Phyllis Dirks home.

The Larry Plumbs, New Hampton, Iowa, spent Friday to Monday in the Virgil Pearson home. A family Thanksgiving dinner was served Sunday at the Pearsons. Attending were the Plumbs, Chuck Sothers and Kade, Laurel, and Don Pearson, Wayne. Marsha Holdorf, Minneapolis, Minn., joined in the afternoon, and Harvey Taylors, Concord, were evening guests.

Glen Magnusons attended the annual Nebraska Lutheran Outdoor Ministry meeting Sunday afternoon in Lincoln.

Mrs. Eleanor Lentz, Ashton, Idaho, returned to her home Saturday after spending about six weeks with her daughter and family, the Ervin Kraemers. Mrs. Lentz and Kraemers visited Nov. 2 in the Alfred Mangels home, Hoskins.

Birthday guests in the Wallace Magnuson home Sunday afternoon to honor the hostess were George Magnusons, Wayne, Melvin Magnusons, Carroll, Arvid Petersons, Denise Magnuson, Creighton, and Deb Bodenstedt, Wayne. Miss Magnuson and Miss Bodenstedt spent the weekend with the Magnusons. Ron Magnusons were evening guests.

Guests in the Myron Peterson home Sunday evening honoring their wedding anniversary were Verneal Petersons and Roger Kvols, Laurel, Arvid Petersons, Fred Manns and Rick Manns.

Dr. William Weierhaeuser returned home Nov. 4 after spending two weeks in Peoria, Ill. and Iowa City, Iowa. He was a judge for homecoming events at Peoria High School and served on the doctoral committee of a former student, Donna Arnold.

Mr. and Mrs. Charles Nies, Omaha, were Friday guests in the Melvin Puhman home.

Melvin Puhmans and Dwight Johnsons, Jennifer and Michael, were birthday guests last Thursday evening in the John Puhman home. Sergeant Bluffs, Iowa, to honor Carri's fifth birthday.

Sunday afternoon guests in the Clifford Fredrickson home were Lowry Monsons, Bloomfield, and Thure Johnsons, Wakefield.

## FmHA Hires Employees To Assist Disaster Loans

Secretary of Agriculture Bob Bergland announced that more than 1,000 temporary employees have been hired by the Farmers Home Administration to help process applications for disaster assistance and adequately service existing loans by farmers.

New estimates by Farmers Home Administration and the Agricultural Stabilization and Conservation Service indicate farmers will need over \$6 billion in federal emergency credit and other assistance from the department in fiscal year 1981, Bergland said. "The greatest need will be in FmHA, where these temporary employees will work."

An estimated \$5.1 billion in credit will be provided by FmHA to help producers who have major crop and livestock losses from drought and other disasters this year.

Payments to farmers from ASCS programs will be an estimated \$1 billion in fiscal year 1981, up from \$270 million in 1980, largely because of reduced crop yields and a shortage of livestock feed supplies in many areas," Bergland said.

As of this week, FmHA has hired and trained more than 1,000 of the 1,228 new employees who will work temporarily at county offices with large numbers of loan applications.

In fiscal 1980, FmHA made more than 53,000 emergency disaster loans for a total of over \$2 billion, most because of the drought and hot weather.

"Because crops are still being harvested, the actual losses by farmers cannot be determined," Bergland said, therefore the full extent of emergency financial assistance will not be known for some time. This is true for many farmers in the South and Southwest who are still trying to salvage hard-hit crops of peanuts, corn, soybeans, grain sorghum and cotton.

"We will find a way to provide adequate farm credit to meet farmers' needs," Bergland said. "Our policy is that if a farm enterprise has a chance of making it, we'll stay with the farmer."

The ASCS emergency feed aid program paid out \$33.4 million to U.S. livestock producers during fiscal 1980 to buy 7.25 billion pounds of feed (equal to 22.3 million bushels of corn). During fiscal 1981, an estimated \$250 to \$300 million will be distributed to farmers under this program. Low-yield disaster payments, which totaled \$219 million in fiscal 1980, are expected to reach an estimated \$720 million in fiscal 1981 because of this year's reduced crops.

Eligible farmers unable to obtain credit elsewhere are usually eligible for Farmers Home Administration emergency loss loans at 5 percent interest. These loans are to be used to cover actual disaster losses. Farmers who are able to obtain credit elsewhere are eligible at a loan rate comparable to the cost of money to the federal government, plus up to one percent. Emergency loans for other than actual losses are available only to producers unable to obtain credit elsewhere.

"At the same time," Bergland emphasized, "our purpose is to supplement, not supplant, private lending. We would expect to return borrowers to regular, private sources of credit at the earliest opportunity."

READ AND USE WAYNE HERALD WANT ADS

## THANK YOU...



for your vote, and to the many, many volunteers who worked so hard during my campaign. I appreciate the confidence shown in me and I will do my best to represent this District in the State Legislature.

**Merle Von Minden**

**Circles Meet**  
Circles of the Concordia Lutheran Church met last week. The Bible study at each meeting was taken from Genesis 11: 1-9.

Mrs. Keith Erickson was hostess for Sarah Circle. Twelve members attended for the Bible study by Mrs. Art Johnson. Officers will remain the same for 1981. Mrs. Norman Anderson will be the January hostess.

Eleven members of Lydia Circle met with hostess Mrs. Harlin Anderson. She also gave the Bible study. Mrs. Clarence Pearson will be the January hostess. Officers for 1981 will remain the same.

Helen Carlson presented the Bible study at Hannah Circle. Eleven members attended and hostess was Mrs. Clifford Fredrickson. The same officers will serve in 1981 and Mrs. Bob

**Couples League**  
The Concordia Couples League met Sunday evening. The program, entitled "The Soil and the Harvest," was given by the Rich Kraemers and the Iner Petersons.

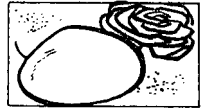
Mrs. Rich Kraemer had devotions.

Newly elected officers are Doug Kries, president; Jim Nelsons, vice president; Ted Johnsons, secretary; and Keith Ericksons, treasurer.

The Dec. 14 meeting will be a noon dinner at the church with the Luther League.

Keith Ericksons and Winton Wallins served refreshments following Sunday evening's meeting.

**Coming Events**  
Monday, Nov. 17: Paint party



Peaches are a member of the rose family.

**THURSDAY NITE**  
Be Sure to be at Kaup's TV for the 8 p.m. \$1000 Bonus Bucks Drawing YOU MAY WIN

Thursday, November 13 - 5 to 7:30 p.m.  
**CHICKEN BUFFET**  
Be Sure to be in our Store Thursday at 6 p.m. for the \$1,000 Give-Away.  
**Jeff's Cafe**  
212 Main Street 375-9929 Wayne

# HIGH RATES

PLUS

# BLANKETS BLANKETS BLANKETS BLANKETS

First National Offers Free Lady Dalton Blankets When You Purchase a New Certificate of Deposit of at Least \$500 or Add \$500 to an Existing Certificate.

These blankets fit twin or full size beds and are available in 6 different colors: cognac-blush-avocado-suede-powder blue-chestnut. 100% acrylic and machine washable. Limit One Per Customer

Take your choice of First National's Certificates which pay the highest rates allowed by law.

FREE CHECKING

a Home Town Friend

FREE CHECKING

FIRST NATIONAL BANK

Main Bank: 301 Main St. 375-2525  
Drive-In Bank: 7th & Main 375-3002



OF WAYNE

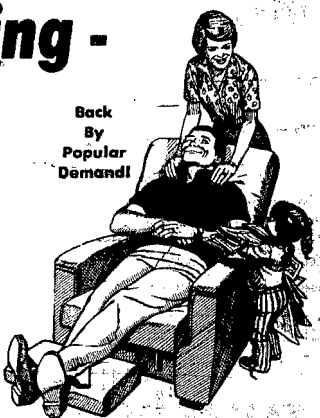
Member F.D.I.C.

## The Cost Of Reclining - Is Declining!

Just in time for the Holidays!

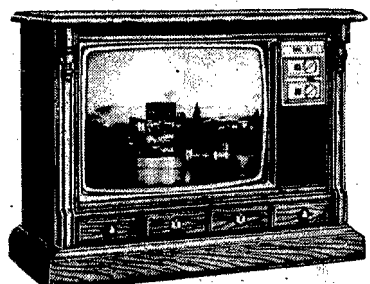
★ **FREE RECLINER**  
(\$150.00 Value)

With the purchase of a new 25" Diagonal color console television from T&C Electronics

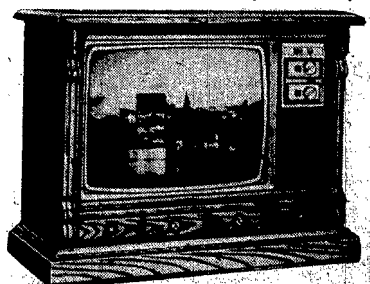


Back By Popular Demand!

★ **FREE Custom Crafted Recliner**



Model 4624—Authentic Early American Design.



Model 4620—Authentic Mediterranean Design.

- 25" MAGNAVOX Console Color TV
- Video-matic
- 100% In-Line Picture Tube
- Solid State Chassis
- Concealed Casters

YOUR CHOICE **\$699<sup>95</sup>**

Includes **FREE** Recliner

**FINANCING AVAILABLE — 90 DAYS SAME AS CASH!**

Be Sure To Stop In Thursday at 8 p.m. for the \$1,000 Give-Away

**T & C ELECTRONICS**  
Your Audio-Video Systems Center

214 Main  
Wayne  
375-4484

**DIXON NEWS** / Mrs. D. Blatchford 584-2488

**Dixon Women Attend Meeting**

Dixon women attending the United Methodist Women Unit Officers' Training session in Pender last Thursday afternoon were Mrs. Clayton Stingley, Mrs. LeRoy Penlerick, Mrs. Leslie Noe, Mrs. Allen Prescott, Mrs. Garold Jewell and Mrs. Earl Mason.

Attending a meeting in South Sioux City that evening were Mrs. Carol Hirschert, Mrs. David Abts, Mrs. Earl Eckert, Mrs. Ronald Ankeny and Mrs. Ernest Knoell.

**Returns Home**  
Mrs. Ronald Ankeny returned home Nov. 4 after spending two weeks in the home of her parents, Mr. and Mrs. Willis Kelly, Everson, Wash., and in the Myrtle Hill home, Monroe, Wash.

On Oct. 26, the Willis Kellys were honored at an open house reception in Everson, Wash. in observance of their golden wedding anniversary. The event was hosted by their four children.

**Dinner Guests**  
Sunday dinner guests in the Duane Diediker home were Mr. and Mrs. Harry Gries, Kingsley, Iowa, Dr. and Mrs. Carl Toben, Brad, Denise and Benjamin, Ida Grove, Iowa, the Don Diedikers and Karl, the Kenny Diedikers, Jo Nelson, Carol Diediker, South Sioux City, and Eunice Diediker and Dawn.

Supper guests in their home to honor the 39th wedding anniversary of the Rev. and Mrs. Paul Friedrich of Wheaton, Minn. were the honorees and Mr. and

Mrs. Willis Schultz, the Mike Roebbers, Jan and Heather, the Kenny Diedikers, the Don Diedikers, Carol Diediker, Eunice Diediker and Dawn, Jo Nelson, and the Dave Diedikers and Adam.  
Friedrichs remained overnight.

**Logan Center United Methodist Church**  
(James Mote, pastor)  
Sunday: Worship, 9-11 a.m.; Sunday school, 10-11.

**Dixon United Methodist Church**  
(Vivian Hand, pastor)  
Sunday: Worship, 9 a.m.; Sunday school, 10.

**St. Anne's Catholic Church**  
(Jerome Spenner, pastor)  
Sunday: Mass, 9:30 a.m.

The Garold Jewells and the Leslie Noes attended the regional volleyball tournament in Howells last Friday evening. The Allen girls played the Howells team.

The Duane Whites visited Nov. 3 in the Jay Fisher home, Norfolk. The David Whites and Michael were Nov. 2 guests in the Duane White home.

The Keith Noe family, Lincoln, were weekend guests in the Oliver Noe home, Dixon, and in the Ronald Allen home, Allen.

The David Dolphs, Schuyler, were Saturday lunch guests in the Ernest Carlson home.

Visitors during the past week in the Wilmer Herfel home were the Larry Hertels, Lawlor, Iowa; the Jeff Hertels, Ponca; Kendall Knudson, Newcastle; Elsie Brawner, Allen; and J. L. Saunders.

Joe Bingham, Pasadena, Texas, spent Nov. 25 in the George Bingham home.

The Lester Troths, Absarokee, Mont., were Nov. 3 dinner guests in the Garold Jewell home. They visited May Jewell at the Ran dolph Colonial Manor on Nov. 1.

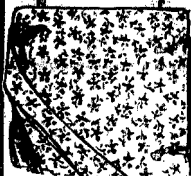
The Ellis Wilber family were Friday evening guests in the Phil Hegstrom home, Sioux City. They also visited relatives there from Maryland.

The Lawrence Foxes and the Wilmer Hertels visited Bessie Sherman last Thursday at St. Luke's Medical Center, Sioux City, and with the Floyd Browns in the Lorraine Church home, Sioux City.

Dinner guests Nov. 2 in the J. L. Saunders home were the Stanley Feringer family, Bloomfield. Dinner guests Saturday were the Jim Cavanaughs, Ames, Iowa.

The Bob Nelsons and Nathan, Aurora, were weekend guests in the Keith Gould home. They also visited in the Howard Gould home.

Sunday afternoon guests in the Bob Dempster home were Mrs. Vernon Peterson, Brenda and Brian, Sac City, Iowa, and the Merle Saxons, Ponca.



**25% OFF**

**CHRISTMAS PRINT FABRIC and CHRISTMAS CUT OUTS**



Infant & Toddler DRESSES reg. 6.99

**5.00**

Girls' TIGHTS sizes 1 to 3 reg. 1.29 **.99** 7 to 14



Infant & Toddler CRAWLERS reg. 3.59 to 4.39

**3.00**

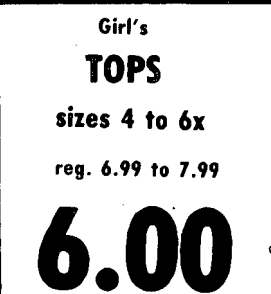


Terry TRAINING PANTS **.66**



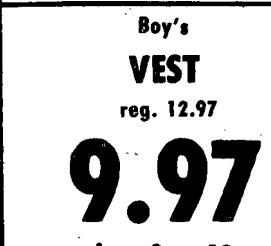
Infant 1 and 2 piece HOODED KNIT SETS reg. 6.99 reg. 5.99

**5.89 4.89**  
reg. 4.99 reg. 10.99  
**3.89 8.89**



Girl's TOPS sizes 4 to 6x reg. 6.99 to 7.99

**6.00**



Boy's VEST reg. 12.97

**9.97**  
sizes 8 to 18



Men's Body Warm dual-layer LONG UNDERWEAR reg. 7.99

**5.99**  
tops or bottoms

**PAMIDA**

Prices effective November 12-16  
East Hwy. 35 Wayne, NE.

HOURS  
M-F — 9:00-9:00  
Sat. — 9:00-6:00  
Sun. — 12:00-5:00



Be Sure To Stop In Thursday at 8 p.m. for the \$1,000 Give-Away



**Men's and Boy's Waterproof WINTER FOOTWEAR**

**REGULAR 9.99 to 29.99**

**20% OFF SALE 7.99 to 24.99**

Sno-boots—Work Boots—Dress Boots—Ski Boots all top quality and rugged built for long wear—Insulated styles—Lined styles—Heavy duty log soles—Re-inforced at stress points.



Big Yanks CHAMBRAY SHIRT reg. 6.47

now only **5.00**



Men's Van Housen LONG SLEEVE SHIRTS reg. 8.00

prints & solids



HUNTING CLOTHS

**25% OFF**

Pants

Jackets

Vests &

Coveralls

READ AND USE WAYNE HERALD WANT ADS



YOUR 1-STOP WEDDING CENTER



See us for:  
Wedding Cards  
INVITATIONS  
ENCLOSURES  
NAPKINS, THANK YOU'S  
RECEPTION ITEMS  
ATTENDANTS GIFTS

A complete selection that will please every Bride, yet the prices are moderate.  
Your Bridal Headquarters

**\$7500 TAX-DEDUCTIBLE IRA.**

(THAT'S NOT A MISPRINT)

Thanks to a new concept called SEP (Simplified Employee Pension) employers can now contribute much more than the usual \$1500 to employee IRA Accounts.

With a contribution limit of \$7500 (or up to 15% of an employee's earnings, whichever is less), the SEP-IRA is an important tax deduction opportunity for employers, and a smart way to attract and hold valued employees.

SEP allows you to avoid complicated tax forms and time-consuming paperwork. Interest earnings are tax-deferred. And, of course, you can make an SEP contribution for yourself as well.

Send in the coupon for more complete information, including facts on SEP investment alternatives.



George Phelps, CFP



**IDEAS TO HELP PEOPLE MANAGE MONEY**

Since 1984 Investors Diversified Services

416 Main Ph. 375-1848  
Wayne, Ne

Please see that I receive more information on the SEP-IRA.

Name \_\_\_\_\_  
Name of business \_\_\_\_\_  
Business Address \_\_\_\_\_  
City \_\_\_\_\_ State \_\_\_\_\_ Zip \_\_\_\_\_  
Phone \_\_\_\_\_



**-WEDNESDAY IS  
DOUBLE COUPON DAY-**

# SAVE NOW ON TENDER TASTY MEATS

THOUGHT FOR THE WEEK  
If we don't like ourselves, Our neighbors are in trouble.

Be Sure To Stop In Thursday at 8 p.m. for the \$1,000 Give-Away



**MAPLE RIVER  
BONELESS  
HAM**  
WHOLE **\$1.89** LB



**MAPLE RIVER  
BONELESS  
HAM**  
HALF **\$1.99** LB

PRairie MAID  
BRAUNSWIEGER **79¢** LB

RICH'S  
TURKEY FRANKS **79¢**  
12 OZ PKG

PORK STEAK **\$1.29** LB

PORK BUTT ROAST **\$1.09** LB

FAMILY PAK PORK CHOPS **\$1.39** LB

SHERMAN FAMILY PAK FRYING CHICKEN **55¢** LB

SHURFRESH BACON **\$1.39** LB  
THICK OR THIN SLICED

SHURFRESH WHOLE HOG SAUSAGE **99¢**  
12 OZ ROLL

PORK LIVER **69¢** LB

ARMOUR CHICKEN FRIED STEAK **\$1.49** LB

OLD HOME OLD SETTLER BREAD **59¢** LOAF



SHURFINE POWDERED OR BROWN SUGAR **\$1.19** 2 LB BAG

**PRODUCE**  
JONATHAN APPLES 3 LB BAG **79¢**  
TEXAS PINK GRAPEFRUIT 6 FOR **\$1.00**

JUICE ORANGES 12 FOR **99¢**  
CELERY HEARTS **59¢** PKG

SHURFRESH CORN 20 OZ BAG **79¢**  
**FROZEN**  
KITCHEN TREAT POT PIES 5 6 OZ PIES **99¢**

FAIRMONT ICE CREAM 4 QUART PAIL **\$2.59**  
MINUTE MAID ORANGE JUICE 12 OZ CAN **89¢**

**DAIRY**  
ROBERTS 1% MILK PLASTIC GALLON **\$1.69**  
SHURFRESH CHEESE FOOD 12 OZ SLICES **\$1.39**

ROBERTS HALF & HALF PINT **39¢**  
DANNON YOGURT 6 OZ **49¢**



SHURFINE FRENCH STYLE OR CUT GREEN BEANS 3 FOR **89¢**  
**TIDE DETERGENT** 16 OZ CAN **\$2.89** 84 OZ BOX  
OCEAN SPRAY CRAN GRAPE DRINK **\$1.39** 40 OZ



DOWNY FABRIC SOFTENER **\$1.89** 64 OZ DIL

SWISS MISS HOT COCOA MIX 12 3 OZ ENV **\$1.49**



GOLD MEDAL FLOUR **\$1.79** 10 LB BAG

COUNTRY BAROQUE STONWARE  
20 PIECE SET LAY-AWAY CERTIFICATES **89¢** EACH  
Gravy Boat/Stand Reg. \$9.99 This Week \$7.99 With Coupon  
This "Dollar Saver" Coupon good through 11/18/80



JELLO INSTANT PUDDING **\$1.39** 4 OZ BOXES

BISQUICK BISCUIT MIX 60 OZ BOX **\$1.99**




BETTY CROCKER CAKE MIX **79¢** 18 OZ BOX

**GET YOUR GROCERIES FREE AT RICH'S**  
Just sign the back of your cash register receipt and place it in our registration box and we will refund the amount of your grocery purchase if your name is drawn, Saturday Night at 9:00. Register receipt must be dated between November 9 and November 16.

Ernest Spahr of Wayne was last weeks winner. He received a check for \$4172 The amount of his groceries last week!

**RICH'S SUPER FOODS** 1034 MAIN STREET 375-2440 WAYNE, NE  
**7 DAY SALE** November 12, 13, 14, 15, 16, 17, 18.

CREAMY CUCUMBER DRESSING **69¢** 6 OZ



WHEATIES CEREAL **\$1.25** 18 OZ BOX  
KEEBLER CREME SANDWICHES **79¢**